



Authentic Community Engagement for Health, Justice & Racial Equity

Centering Community in Public Health

Kansas Community Health Promotion

Virtual Summit

January 26, 2021

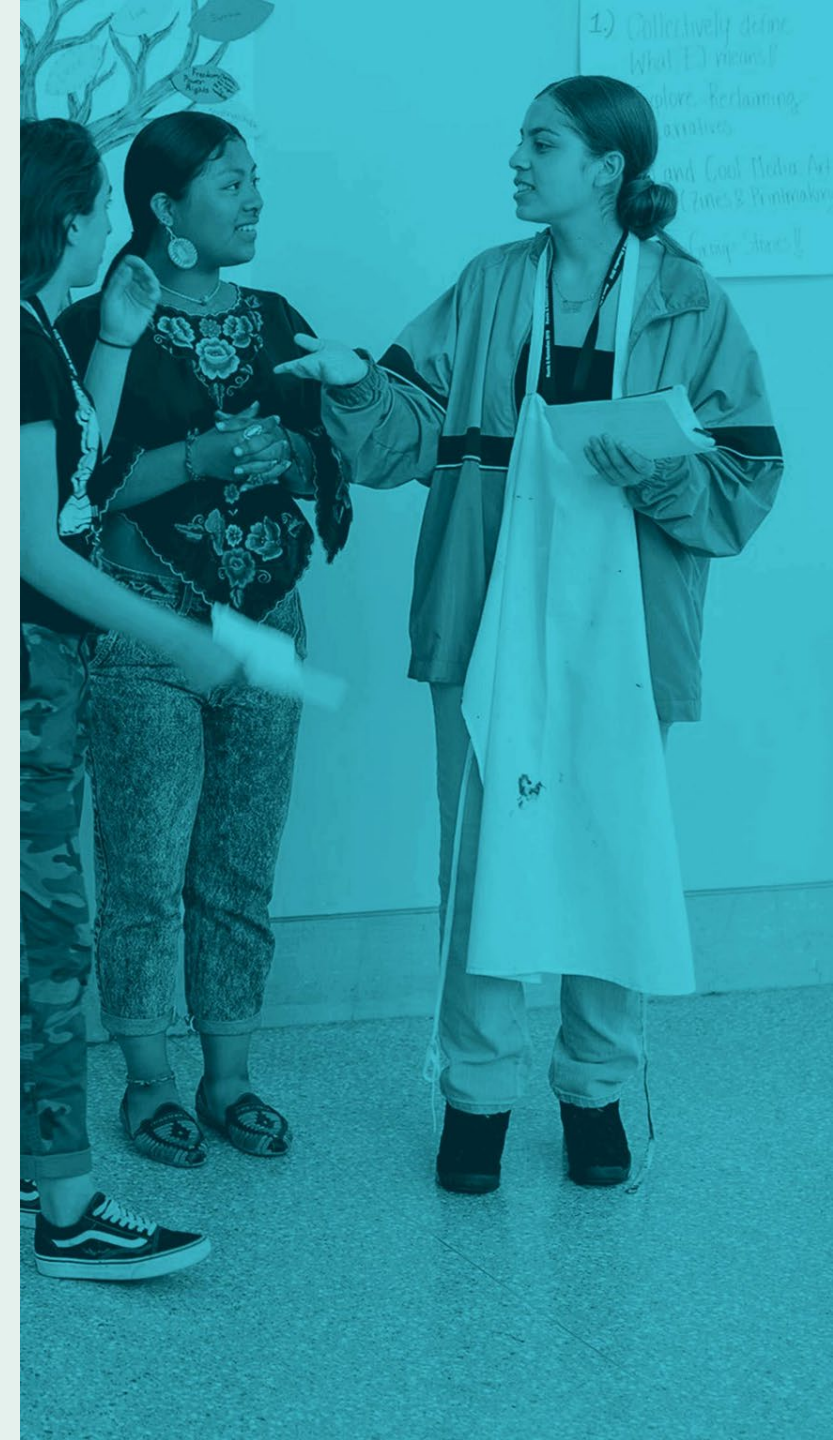
Land Acknowledgement



Gratitudes

Thank you to the community partners who contributed their wisdom, knowledge, and experience to this discussion:

Praxis technical assistance partners, staff, Board of Directors, and network of basebuilding organizations.



Welcome & Introductions

Let's test the chat tool (to panelists and attendees):

1. Name
2. Pronouns
3. Sector (community, nonprofit, government, etc.)
4. The Native land you are on
5. Your city/state



The Praxis Project is a national non-profit organization that works in partnership with national, regional, state, and local partners to achieve health equity and justice for all communities. **Our mission is to build healthy communities by transforming the power relationships and structures that affect our lives and communities.** Praxis supports policy advocacy and local organizing as part of a comprehensive strategy for change.



Praxis Theory of Change

Build
Community
Power

Increased
Agency to
Shape Policies,
Systems &
Practices

Basebuilding
Organizing is
Intrinsically Valued
and Directly
Supported

Positive Change
Across Social
Determinants of
Health Equity

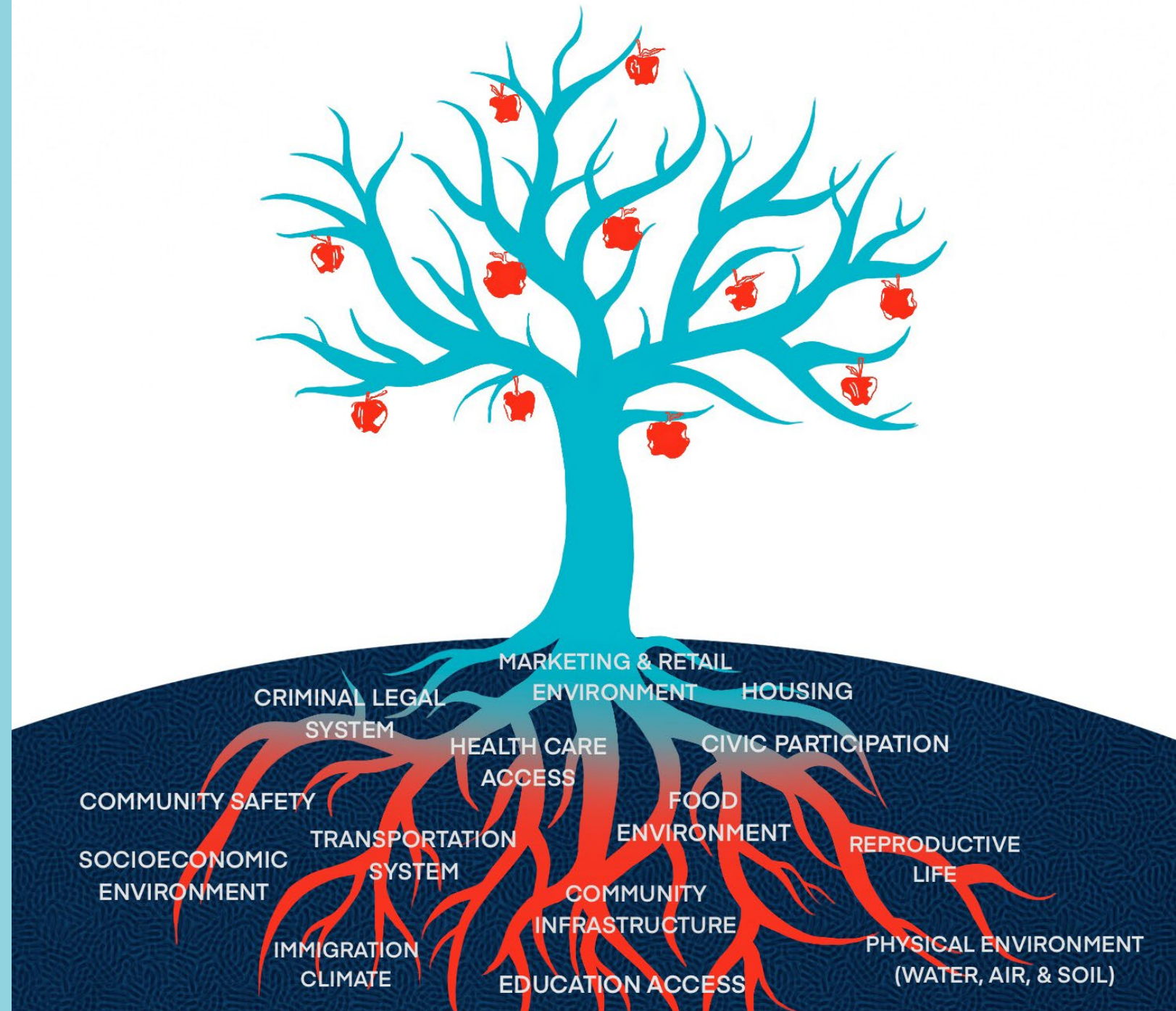
More Just
Society



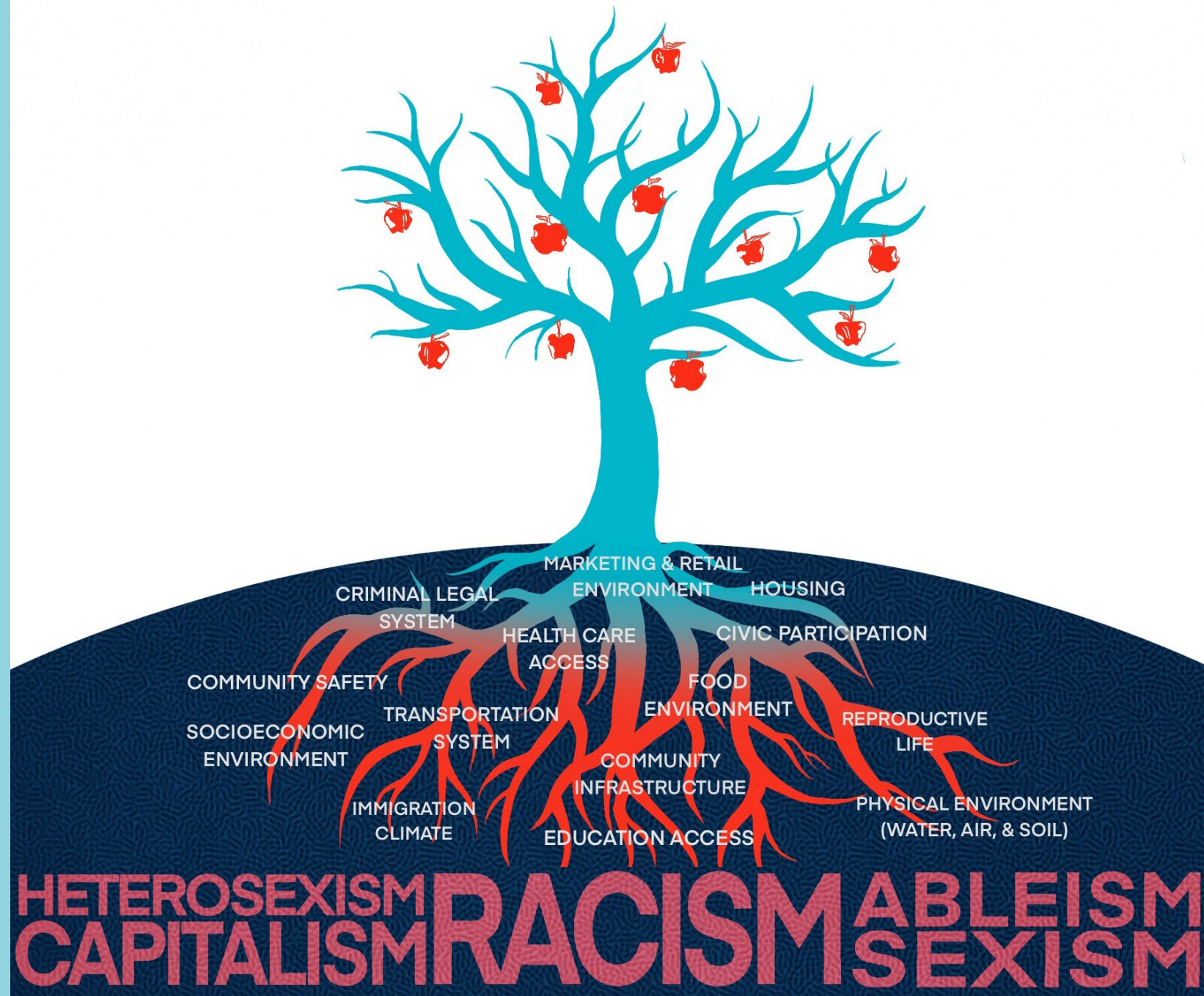
Health Justice: Why?



Social Determinants of Health

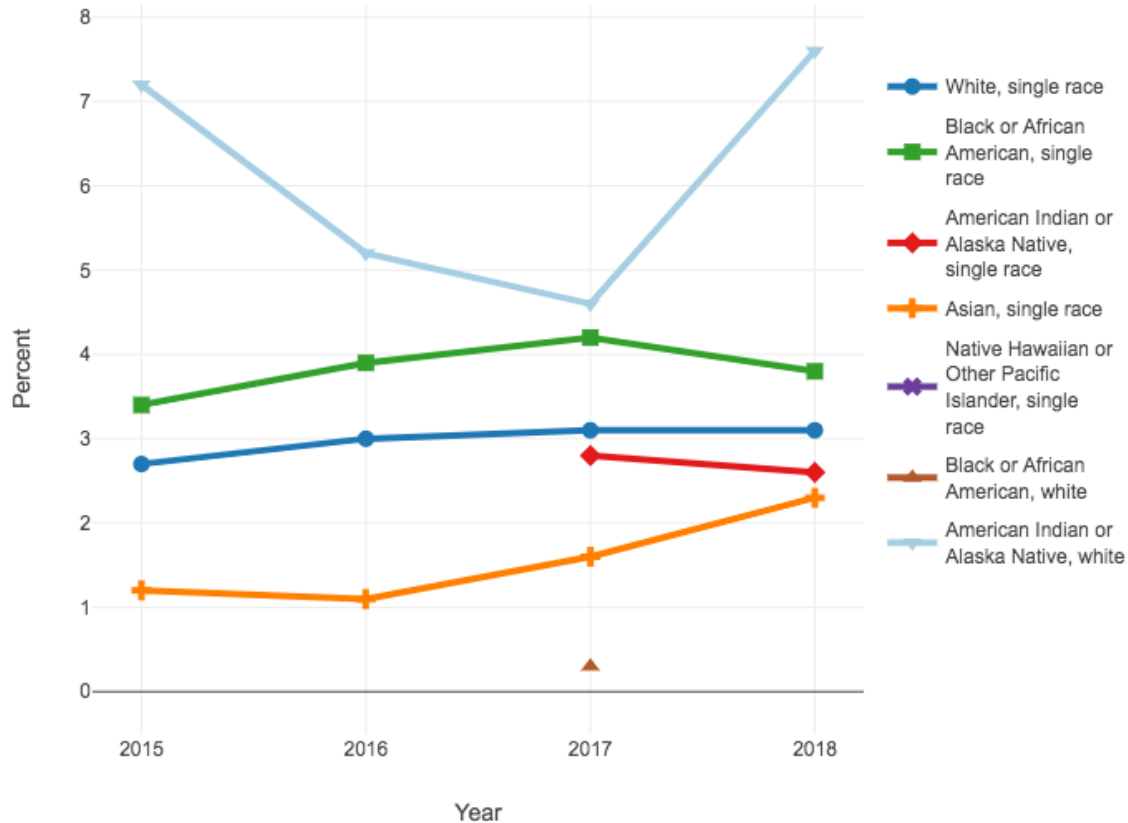


Determinants of Determinants



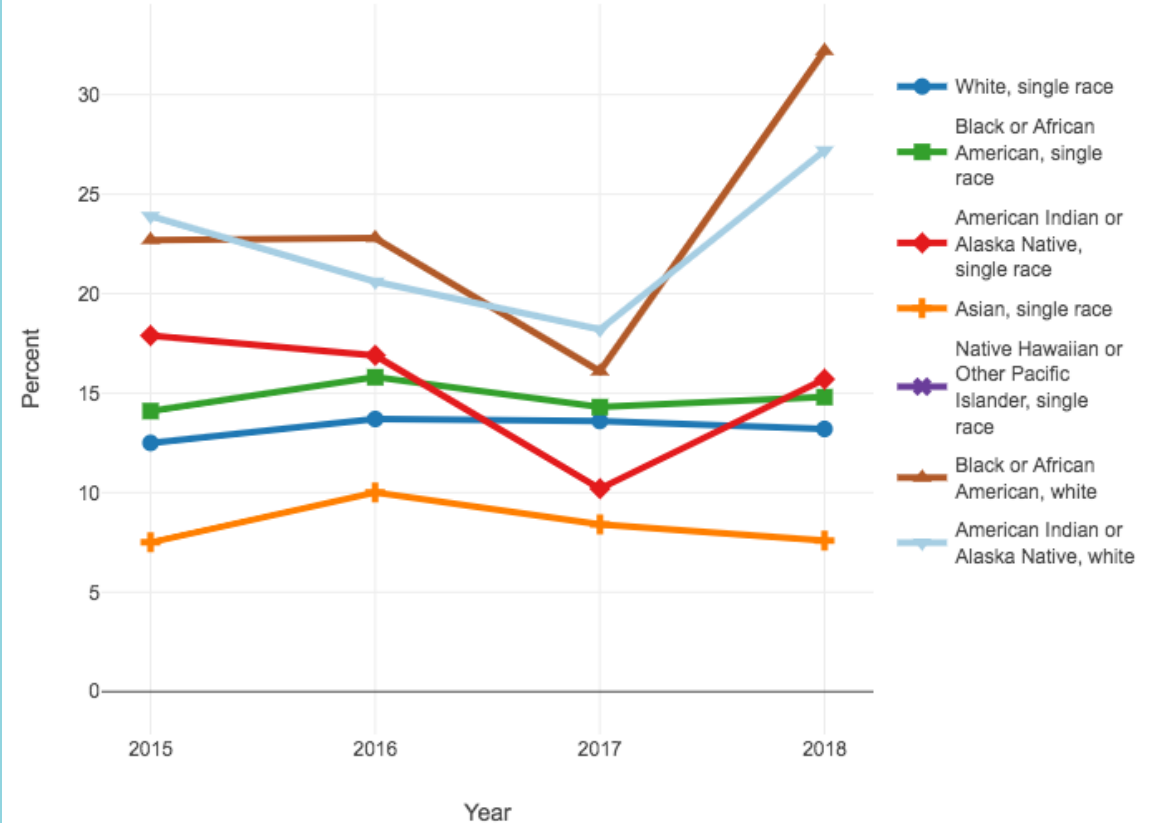
How to we get to the roots & soil?

Crude percentages of stroke for adults aged 18 and over, United States, 2015-2018



Source: National Center for Health Statistics, National Health Interview Survey, 2015-2018

Crude percentages of ever having asthma for adults aged 18 and over, United States, 2015-2018

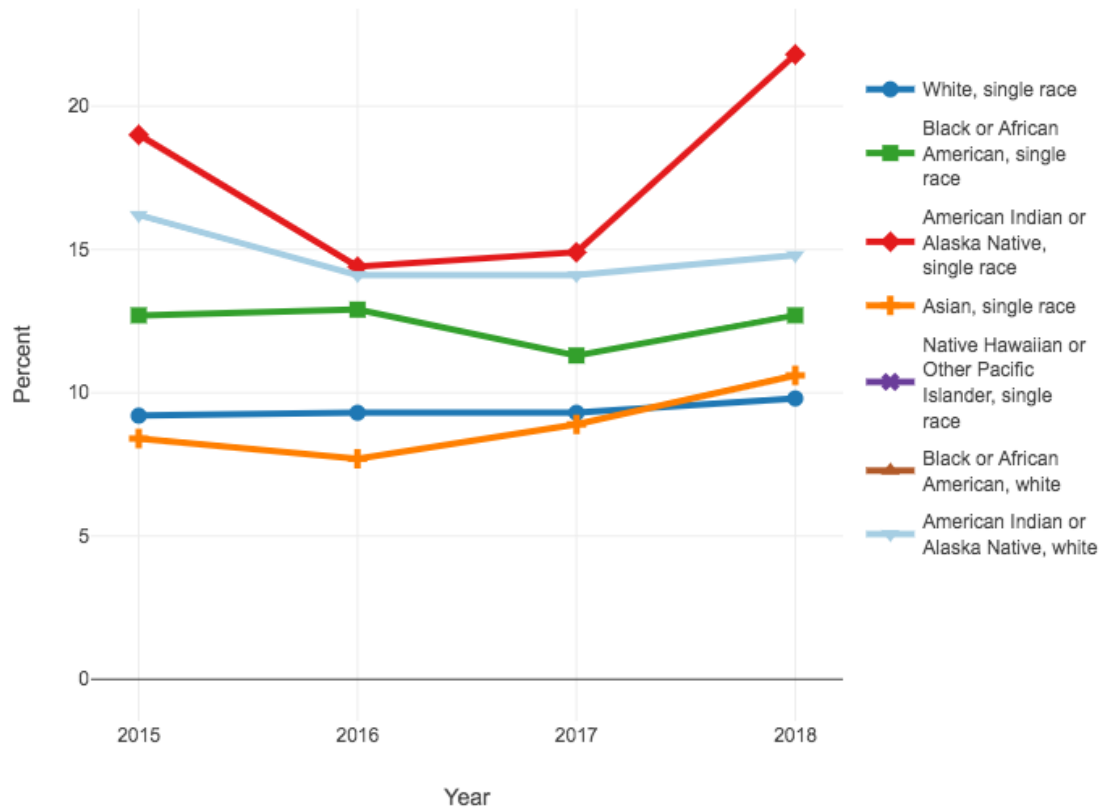


Source: National Center for Health Statistics, National Health Interview Survey, 2015-2018



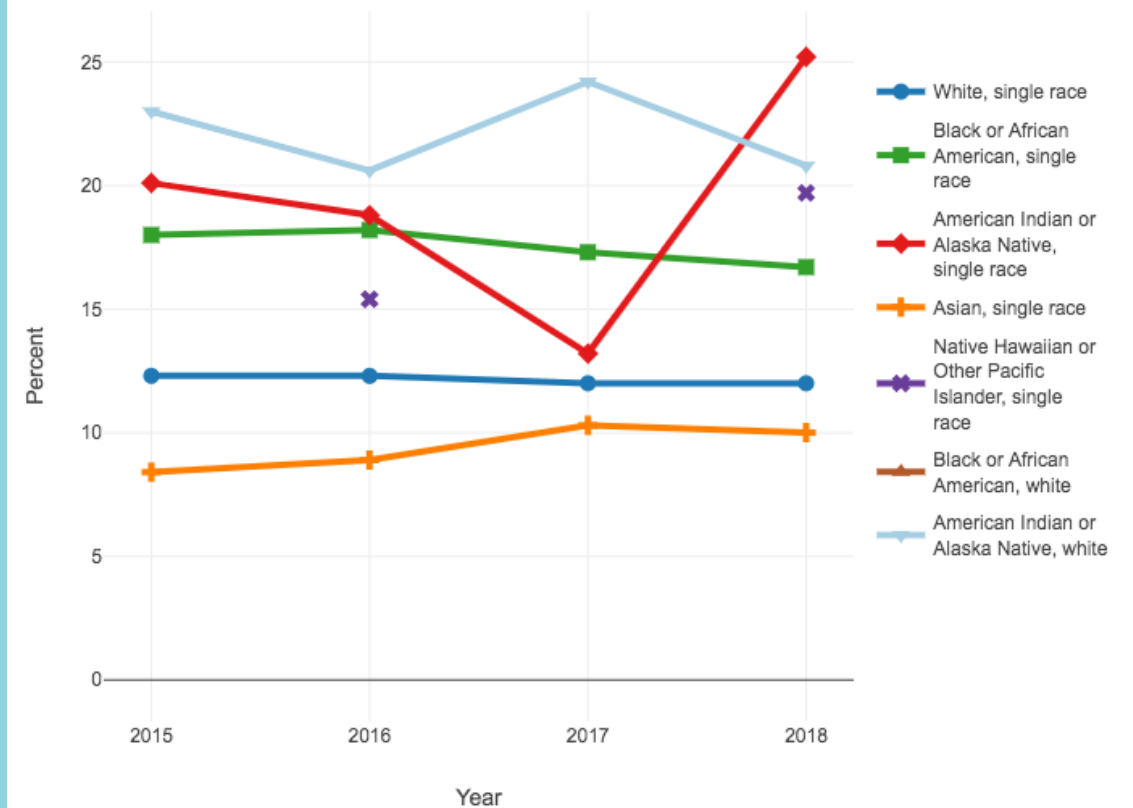
How to we get to the roots & soil?

Crude percentages of diabetes for adults aged 18 and over, United States, 2015-2018



Source: National Center for Health Statistics, National Health Interview Survey, 2015-2018

Crude percentages of fair or poor health status for adults aged 18 and over, United States, 2015-2018



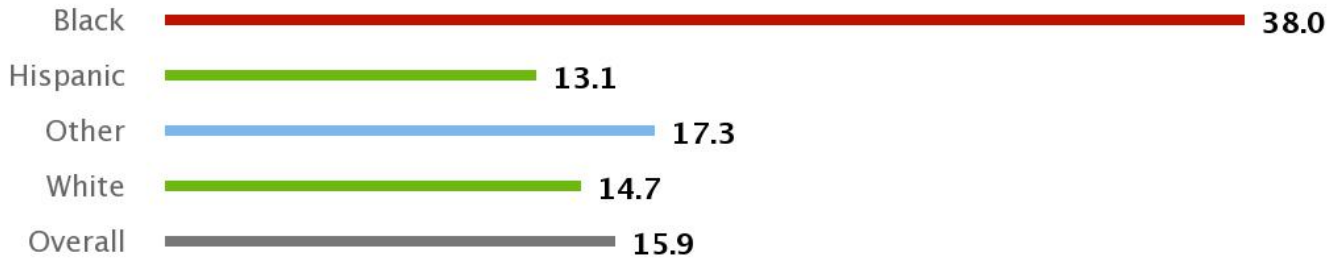
Source: National Center for Health Statistics, National Health Interview Survey, 2015-2018



How to we get to the roots & soil?

Diabetes Hospital Admission Rate by Race/Ethnicity
State: Kansas

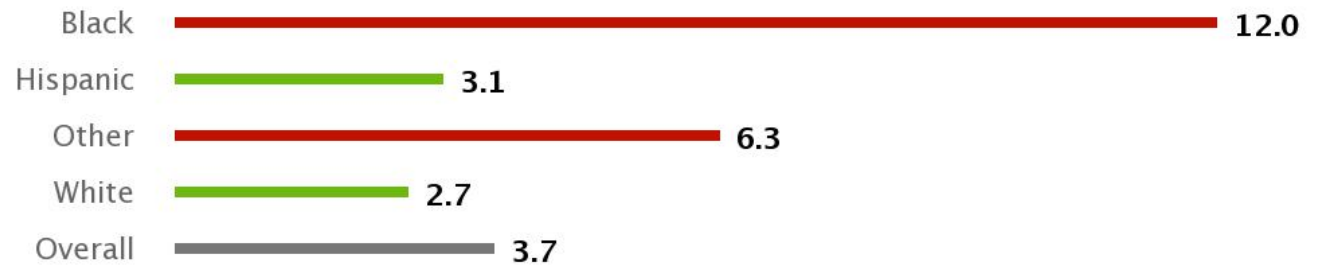
www.kansashealthmatters.org



Source: Kansas Department of Health and Environment (2016–2018)

Asthma Hospital Admission Rate by Race/Ethnicity
State: Kansas

www.kansashealthmatters.org

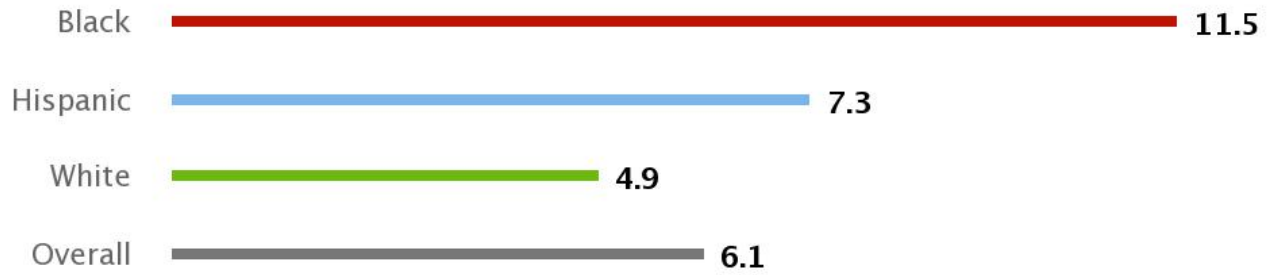


Source: Kansas Department of Health and Environment (2016–2018)

How to we get to the roots & soil?

www.kansashealthmatters.org

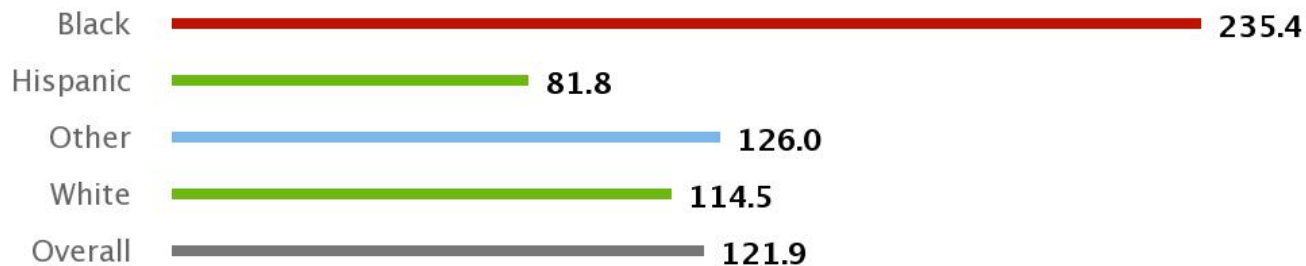
Infant Mortality Rate by Race/Ethnicity
State: Kansas



Source: Kansas Department of Health and Environment (2014–2018)

www.kansashealthmatters.org

Heart Disease Hospital Admission Rate by Race/Ethnicity
State: Kansas



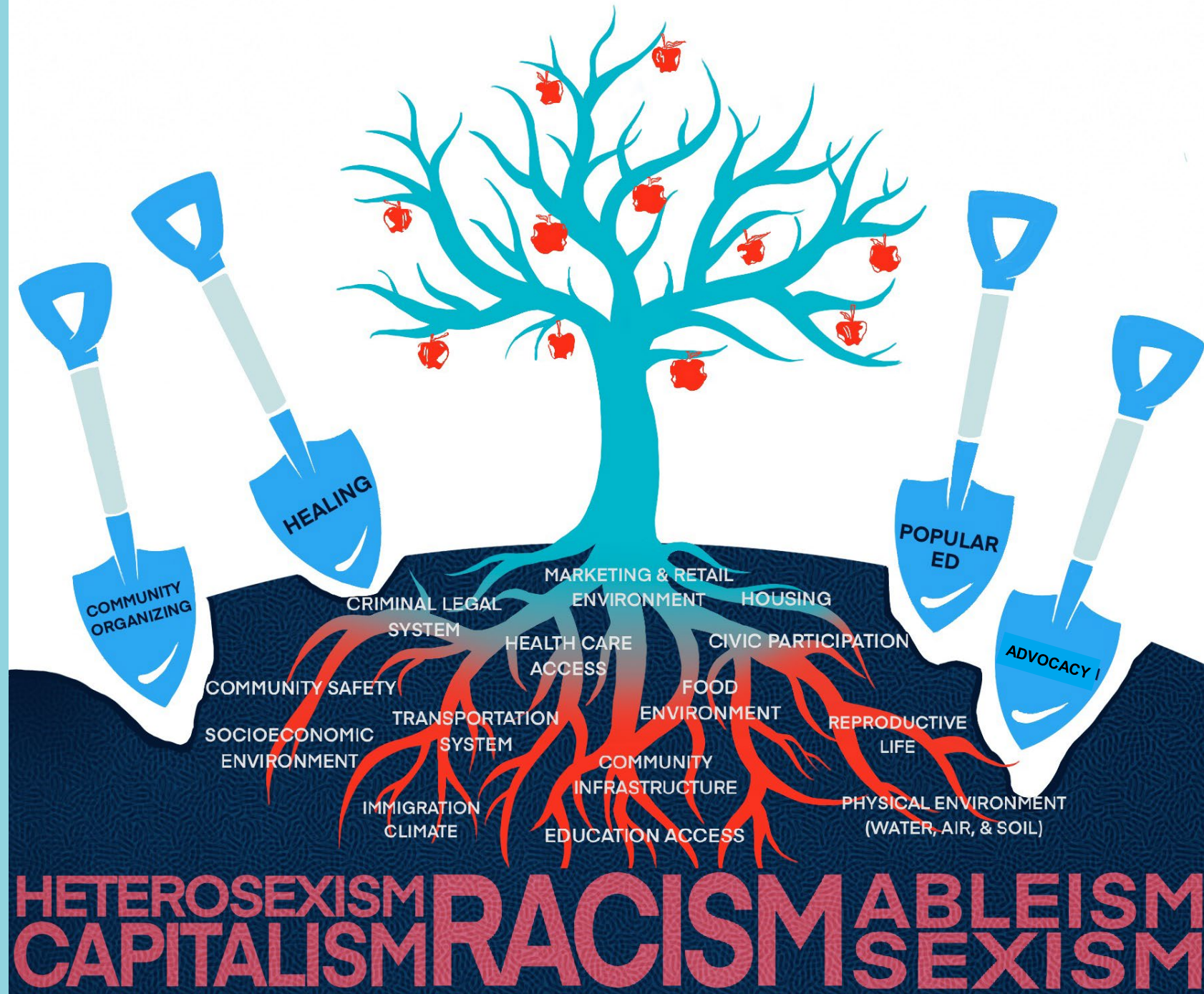
Source: Kansas Department of Health and Environment (2016–2018)

Health Justice: What?

Chat: How do *you* define health justice?



Health Justice



Health Justice Components



Practices & Tools to Advance Health Justice Internally (within organization):

- Explicitly naming and addressing race & racism
- Internal policies and practices
- Dedicating time and resources to racial justice
- **Centering community voices**



Practices & Tools to Advance Health Justice in Programs & Policies:

- Racial equity impact assessment tool
- Quality improvement tools
 - Results-Based Accountability
 - A3
 - PDSA
- **Centering community voices**



Results-Based Accountability & Racial Equity

Performance Measures

(What WE are doing to advance racial equity)



When in doubt, stratify by race. Please also note that race is just a proxy for measuring experiences of racism. It is imperfect, but a place to start.

Centering Community

Please chat: What are the benefits of centering community?



Health Justice: How?

Praxis' Working Principles for Health, Justice & Racial Equity



ACT WITH CARE



INCLUSIVITY

Working Principles for Health Justice & Racial Equity



COMMITMENT TO TRANSFORMATION



SUSTAINABLE SOLUTIONS



AUTHENTIC COMMUNITY COLLABORATION



Act with Care

Proceed thoughtfully.

Be deliberate.

Seek to understand.

Build trusting relationships.

Lead with love.

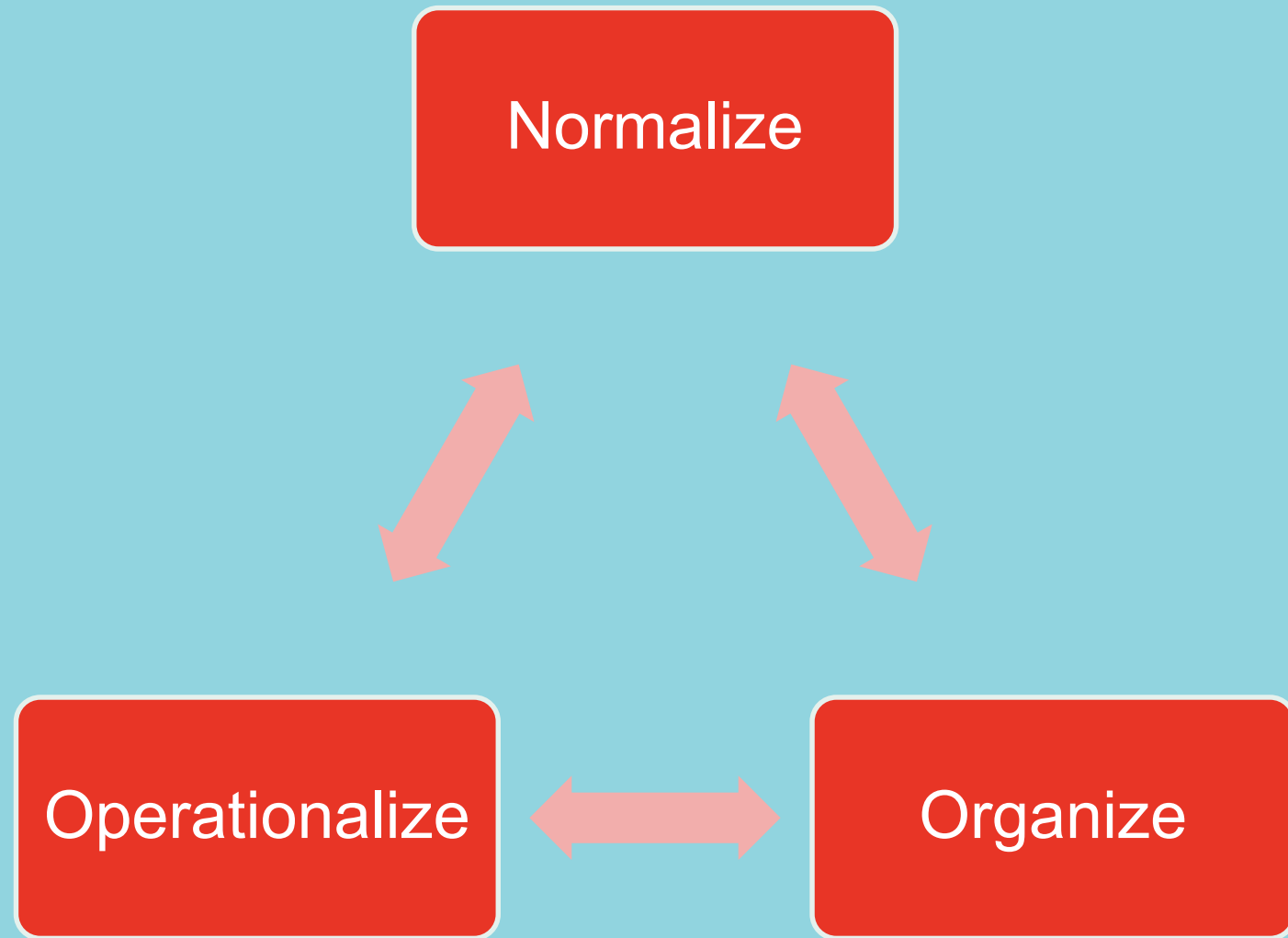




Act with Care



Example: Roots & Remedies



Act with Care



Example: Government Alliance on Race & Equity (GARE)

Inclusivity

Those most affected by inequities are in the best position to define the problem, design appropriate solutions, and define success.

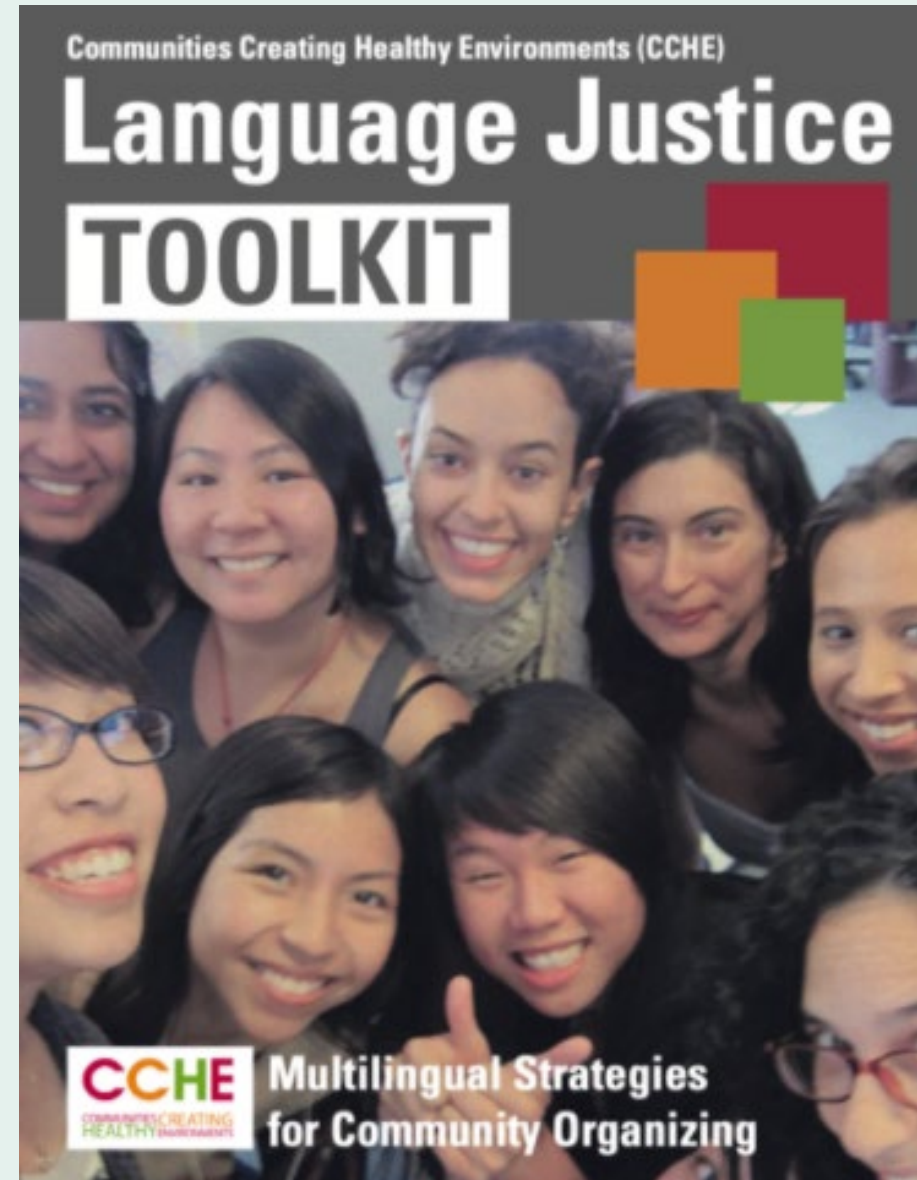


Inclusivity



Example: Black Organizing Project

Inclusivity



Example: Language Justice

Authentic Community Collaboration

Authentic community collaboration builds dignity and allows for all perspectives to be considered and integrated; solutions should be co-designed, co-implemented, and co-measured/evaluated.



Authentic Community Collaboration



Example: LUPE

Authentic Community Collaboration



*Example: Berkeley Soda Tax
Community Advisory Board*

Sustainable Solutions

Solutions should be community-driven, build community capacity and resident knowledge, deepen relationships, increase programmatic capacity, build lasting infrastructure, and ensure respect for all.





Voting Rules Everything Around Me (VREAM)

Black Women for Wellness' Sisters in Control Civic Engagement and Voter Education program increases the electoral and political power of Black women through voter education, registration and outreach during and between elections.

Sustainable Solutions



Example: Black Women for Wellness

Focusing on individual behaviors:

What you can do to
REDUCE YOUR RISK
for preterm birth

- Go to the doctor as soon as you think you are pregnant.
- Let your partner, friends and family know you need help. Having a baby can be tough!
- Maintain a healthy weight, and exercise before, during and after your pregnancy.
- Wait 18 months after the birth of your baby to get pregnant again.

For more information, download the [Preterm Birth Tip Sheet](http://www.cdph.ca.gov/pretermbirth) (www.cdph.ca.gov/pretermbirth).

Providing income supplement for
Black & Pacific Islander pregnant
people:

vs.

**Abundant Birth Project gives
expecting mothers one less
thing to worry about**

Program aims to reduce Black, Pacific Islander preterm births
with monthly payments, support

Sustainable Solutions



Example: Abundant Birth Project

Commitment to Transformation

All participants can learn from one another, reflect on their own structures and practices, and find areas to continuously improve organizational culture and practices.





Commitment to Transformation

Example: Learning Circles

ACT WITH CARE



INCLUSIVITY

Working Principles for Health Justice & Racial Equity



COMMITMENT TO TRANSFORMATION



SUSTAINABLE SOLUTIONS



AUTHENTIC COMMUNITY COLLABORATION



Health Justice in Action

- **Prioritize** the community or geographical region with the greatest inequities.
- **Dedicate** resources according to community priorities.
- **Authentically partner** and design efforts with community.
- **Invest** long-term in community infrastructure.
- **Address** the root causes of the issues prioritized by the community.



Health Justice: What?

Please chat: How has this shifted or added to your understanding of health justice?



Assessing & Improving Our Work

THE PRAXIS PROJECT

WORKING PRINCIPLES FOR HEALTH JUSTICE & RACIAL EQUITY ORGANIZATIONAL SELF-ASSESSMENT

PURPOSE

The purpose of this organizational assessment is for organizations or programs to reflect on the ways in which they embody health justice and racial equity in practice, and identify opportunities for growth and improvement. Praxis does not believe that health justice and racial equity can simply be calculated; rather, this assessment is simply a guide to facilitate reflection and team discussions, and support actions that organizations can take to improve authentic community partnerships.



Recommendations

- Complete the organizational self-assessment with your colleagues.
- Invite community partners to complete it (with compensation) to identify where there are gaps in the HOW of health equity!



Questions?

Please use the hand raising function for Q&A!



Thank You!

* Please don't forget to complete the evaluation!

Xavier Morales, PhD, MRP

Executive Director

Xavier@thepraxisproject.org

Jenna Gaarde, MPH

Program Director

jenna@thepraxisproject.org



praxis_project



praxis_project



@praxisprojectorg



www.thepraxisproject.org



Practices & Tools to Advance Health Justice

- Racial equity impact assessment
- Explicitly naming and addressing race & racism
- Quality improvement tools
- Principles for authentic community engagement
- Government Alliance on Race & Equity tools

