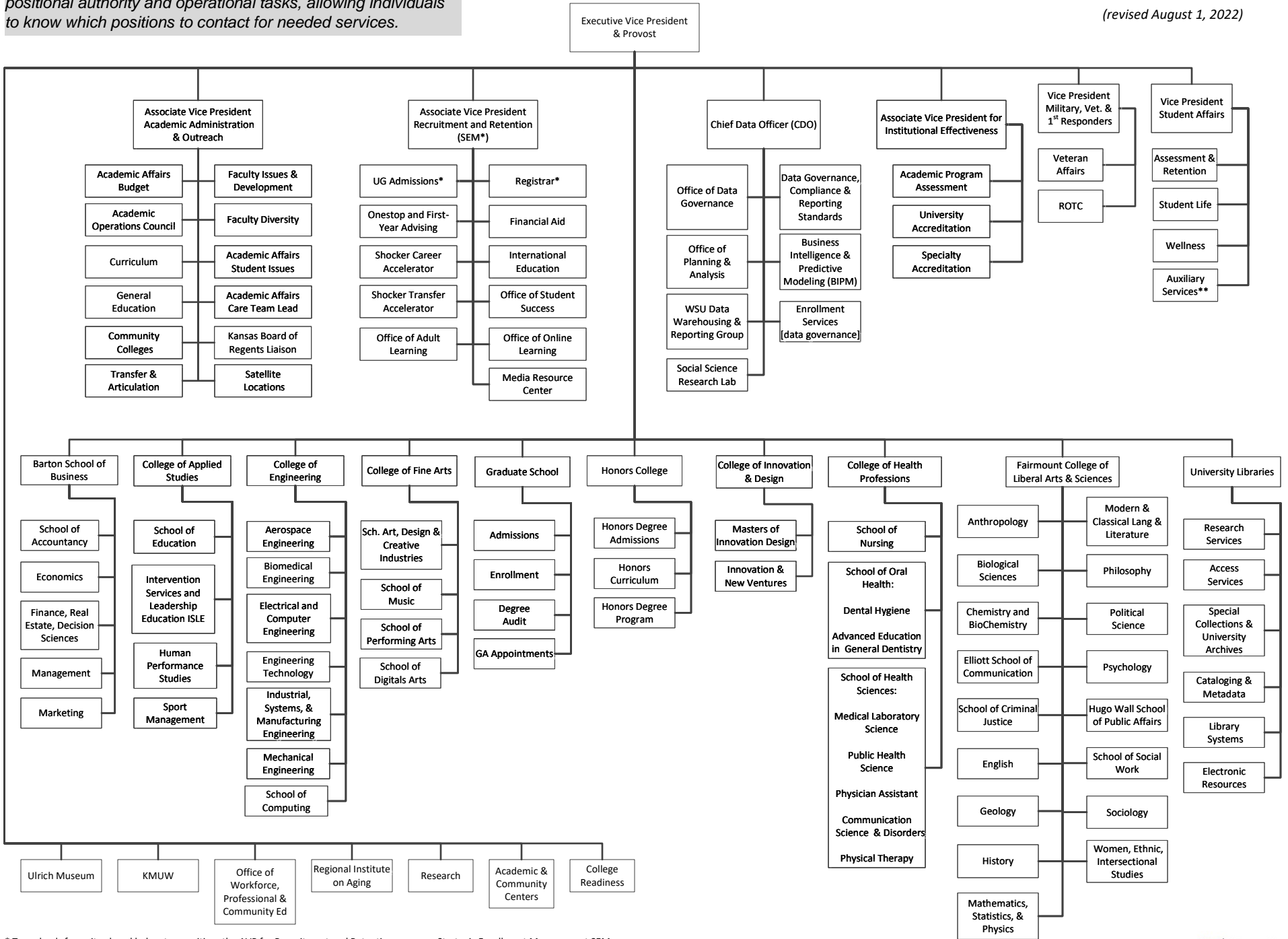


This is a functional organizational chart designed to display positional authority and operational tasks, allowing individuals to know which positions to contact for needed services.

Academic Affairs Organizational Chart

(revised August 1, 2022)



* Team leads for units placed below top position; the AVP for Recruitment and Retention oversees Strategic Enrollment Management SEM.

** Auxiliary Services includes oversight of operations of Wichita State University Union Corporation.