

# OFFICE OF COMMUNITY PARTNERSHIPS

# PURPOSE

The Office of Community Partnerships will serve as a backbone support for community-focused Wichita State centers, departments, faculty, staff, and students interested in strengthening the well-being of Kansas residents, organizations, and communities.

# BACKGROUND

- Grant & contract funded areas with primary focus on community partnerships
- Support WSU faculty, staff, students interested in opportunities to partner w/ community for research, consultation, service, etc.
- Other universities embracing community partnerships

OU <https://outreach.ou.edu/> & K-state <https://www.k-state.edu/engagement/>

# GOALS

- Elevate Awareness & Interest
- Create New Connections & Partnerships
- Provide Infrastructure for Wichita State Processes
- Offer Learning, Leadership, and Guidance
- Support Additional Services and Efforts

# CORE PARTNERS

- Led by small administrative staff w/ strong history of community partnerships, including CEI and PPMC
- Other centers, departments, others could join “core” partners, including new centers, offices, and/or others with community-facing mission

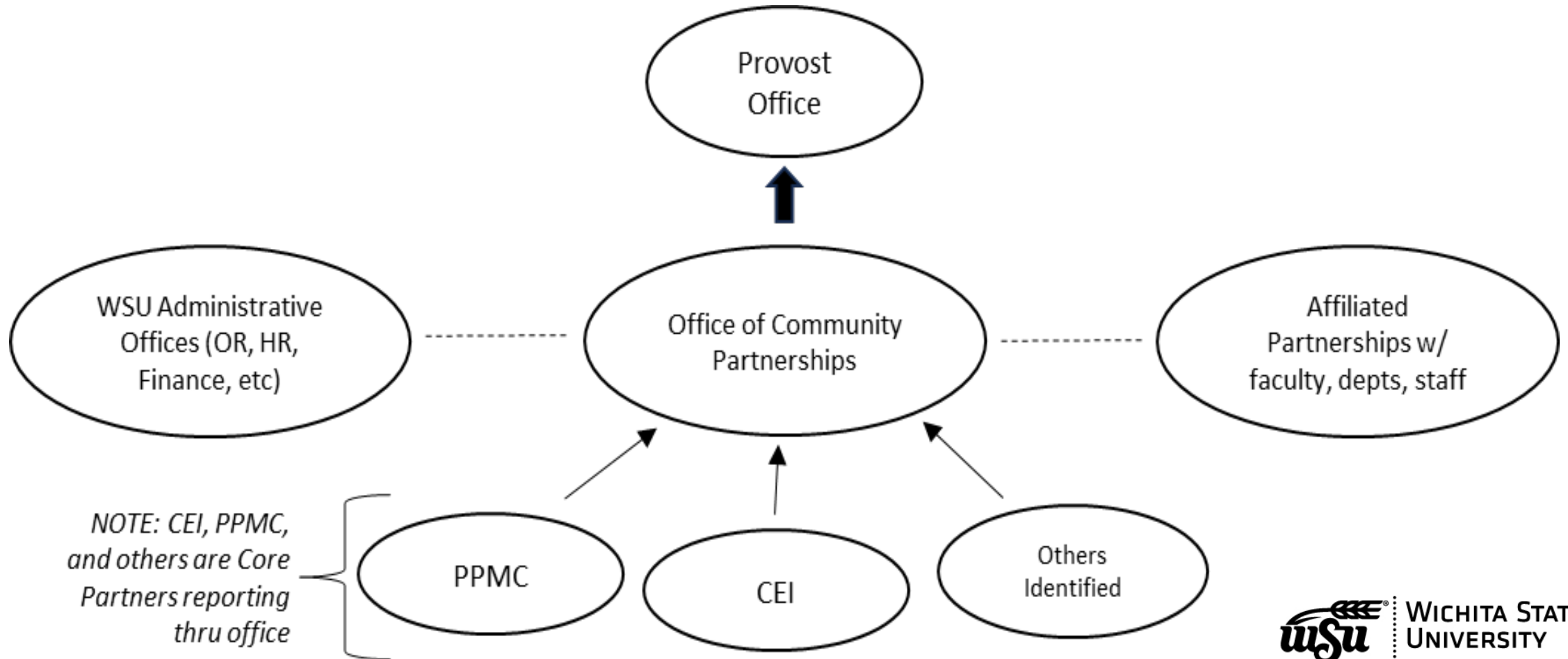
# AFFILIATED PARTNERS

- WSU faculty, departments, staff, students who have an interest in community-oriented services
- Office will provide a support structure
- If interested in becoming an affiliated partner, there will be a defined process to establish relationship

# RELATION TO WSU ADMIN OFFICES

- Office will provide infrastructure support to core & affiliated partners
- Not a replacement for existing WSU support offices, but centralized to bring efficiencies and offsetting time/burden in grant and contract management

# STRUCTURE





# FISCAL YEAR 2025 ACTIVITIES

- Finalize Core Centers, Departments, etc.
- Communication & Marketing
- Explore Affiliated Partnerships
- Events and Recognition
- Seek New Collaborations

QUESTIONS?

*Thank  
you!*