

# School of Social Work News

Volume 4, Issue 3  
May 2006



*School of Social Work*  
*Fairmount College of Liberal Arts and Sciences*  
*1845 Fairmount, Wichita, KS 67260-0154*  
*(316) 978-7250*



## Congratulations to Our Graduates!

### BSW Graduates

|                      |                         |
|----------------------|-------------------------|
| Kala Adam            | Sarah Kerr              |
| Sara Adams           | Ashley Kliewer          |
| Edwin Adams          | Carissa Kline           |
| Erin Anderson        | Debbie Lacy-Sisco       |
| Louisa Arellano      | Cindy Luke              |
| Donna Becker         | Shanell Mans            |
| Candace Bell         | Dalena Mar              |
| Jennifer Billingsley | Courtney McPhail        |
| Joshua Boydston      | Sherrie Mosley          |
| Todd Brown           | Rebecca Murfin          |
| Sarah Clark          | Skylinn Ortiz           |
| Julie Cleveland      | Deborah Osmun           |
| Gentry Cobb          | Jordan Reheis           |
| Melissa Corcoran     | Susan Rikli             |
| Andrea Cummins       | Sylvia Salgado          |
| Jason Decker         | Janel Sanford           |
| Mary Doyle           | Catherine Shaw          |
| Megan Ewing          | Amanda Shuey            |
| Shala Foster         | Crystal Smith           |
| Bianca Garcia        | Jodi Smith              |
| Crystal Goodwin      | Jill States             |
| Kerri Hagan          | Bobbie Stinson          |
| Crystal Hamilton     | Shasta Townsend         |
| Deb Heck             | Robine Warry            |
| Dru Heffron          | Wendy Wentworth         |
| Laurel Janssen       | Josie Wright            |
| Deanna Joynes        | Amy Allman (Posthumous) |

### MSW Graduates

|                          |                    |
|--------------------------|--------------------|
| Valerie Ahlf-Vazquez     | Diana Herberger    |
| Martha Arana             | Sylvia Hernandez   |
| Alison Asher             | Trista Herrmann    |
| Jennifer Atchison        | Rebecca Hill       |
| Debbie Back              | Michelle Holdeman  |
| Sheri Baker              | Leslie Horn        |
| Sierra Bauer             | Kelli Isaacson     |
| Kelley Bieberle          | Indy Jones         |
| Darcy Bigham             | Lorraine Jones     |
| Jon Bryan                | Gail Kelly         |
| Kindra Burton            | Chuck Lambertz     |
| Chul-Soon Choi           | Dawn Miller        |
| Marla Clouse             | Andrea Minet       |
| Karen Countryman-Roswurm | Peter Ninemire     |
| Tara Dahlstrom           | Angelica Nunemaker |
| Yadira DeAnda            | Christina Olson    |
| Karen Dodson             | Deah Rhodes        |
| Sarah Forsythe           | Jeffrey Roth       |
| Tara Fortner             | Kimberley Rowan    |
| Stephanie Galusha        | Stacy Sarratt      |
| Jennifer Gibson          | Mary Ann Smith     |
| Shealah Gulick           | Erica Soltero      |
| Sarah Hanes              | Nicole Stump       |
| Jennifer Hardin          | Jessica Wingler    |
|                          | Sherry Worth       |



### Inside Stories

- *In Honor of Edward H. Tuttle* 2
- *Director's Corner* 2
- *Field Notes* 2
- *Community Offerings* 3
- *Social Work Employment Offerings* 3
- *Mark Your Calendar* 7
- *Glimpses of the MSW Colloquium* 7

#### May is Foster Care Month

*The Salvation Army Foster Care staff acknowledge and thank all the past and present foster parents for their contribution to the children and families in the community. You play a crucial part in the life of the children who unfortunately are subject to abuse and neglect. Please know that your are very much appreciated.*

## Colloquium, Phi Alpha and All School Assembly



Monday, May 8, 2006 was the 6th Annual Advanced Generalist Integrative Project Colloquium to showcase the research and practice projects of 49 graduating

Master of Social Work students. There were 14 sessions, grouped by practice area, with 3-4 students presenting in each session. The

*(Continued on page 6)*

### Comments from Colloquium Evaluations:

"This was the best workshop I've attended! It's clear that these students did some thinking and some work on these topics. I was impressed."

"She seemed like she was a college professor. Good job!"

"Good connection between the surveys and empowerment."

"These ladies obviously worked very hard on their projects."



## In Honor of Edward H. Tuttle

### By Dr. Elwin Barrett

Ed Tuttle was the originator and founder of the School of Social Work at a time when there were few developed undergraduate social work programs. He came from a social work practice area of community organization, which he put to good use in developing our program. As a good community organizer, he performed a survey of needs and found that this geographical area would like to have both an undergraduate and master's social work program.

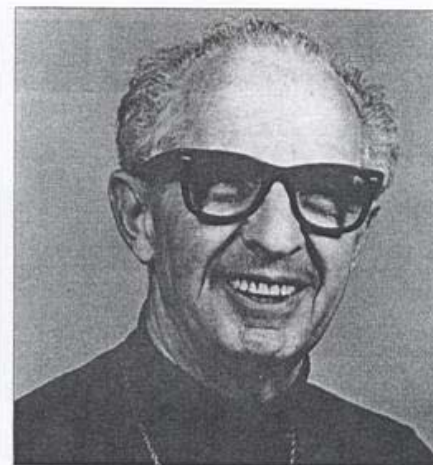
He was able to accomplish first the baccalaureate in social work, although he continued to work on getting state support for a Master's program. He hired two social workers, Bernice Hutcherson and Bobbye Humphrey, putting together a good initial Social Work curriculum. He remained chair of the program until he semi-retired at the point when bachelor programs were becoming

accredited. He hired Dr. Elwin Barrett to complete the accreditation process.

Ed Tuttle was highly knowledgeable and skilled at negotiating an undergraduate social work program at WSU with support of the professional community, but initially little support from the university. He had a strong drive and commitment to increasing opportunities for underserved minority students.

Ed Tuttle had a real feel for the profession and needs. He had a major commitment, not only to the social work program, but in developing social work services within the community on a variety of boards and providing consultation to a number of social work agencies.

Ed Tuttle continued to support the social work students and program, even after leaving the university. He left an estate gift of



Edward H. Tuttle ASCW brought a wealth of field experience to play in establishing WSU's social work program in the late 1960s.

more than \$70,000 for an endowed scholarship fund. This fund is now divided between undergraduate scholarships and graduate fellowships for students majoring in social work.

## Director's Corner

### Linnea GlenMayer, Ph.D., Director, School of Social Work

Greetings!

After rain and hail and commencement, we are about to begin our summer activities. Commencement, as always, was wonderfully celebratory, and we will now look forward to hearing about the great work our BSW and MSW graduates are doing in the community. This year was particularly poignant, as we presented a posthumous degree to Amy Allman, a senior in our BSW Program. At the All-School Assembly on May 8, I

shared my last conversation with Amy, about two weeks before she passed away. She told me, "Dr. GlenMayer, I'm going to get this degree. I've worked too hard to give up, and I want you to know that I'm going to get there!" She was right, but not in the way I imagined it." We awarded Amy the Bachelor of Social Work degree in recognition of her commitment to her education and to the social work profession. The courage I saw in Amy was moving and inspiring. In many

ways, all our graduating students are examples of the determination, commitment and courage that Amy showed. We are fortunate, indeed, to share in the joy of accomplishment that graduation represents. Now that Spring has officially ended, I will spend most of the summer working on re-accreditation activities, and maybe a little time enjoying the warmth and sun of the Wichita summer. See you next Fall!

## Field Notes

### Sabrina Perez Glatt, Director of Field Practicum

I have the greatest job. I get to remember what you looked like while we were going through the decision process of which agency you were going to put your efforts in and learn from. How now you look like individual practitioners that will be joining the rest of us in this profession called social work.

I could look at how you all were in social service agencies, schools, hospitals, treatment facilities, and governmental institutions providing 69,920 hours of service. Many services that would not

have been provided if it was not for you, because not everyone wants to do what you did.

**All you did was:** hold the hands of the dying, encourage the kid that no one believed in, and kept a mother and drug-affected infant together for recovery.

**All you did was:** give your insights that led someone to understand their relationships, their depression, their world in a way that makes them desire to stay around to see how their life turns out.

**All you did was:** make sure people

were able to eat and sleep in a safe place. Demonstrate a way to leave a life of crime or know that life doesn't have to involve pain and fear.

**All you did was:** teach a child or an adult to read and open their world to any possibility.

**All you did was:** improve the quality of many lives through empowerment, dignity, respect, and self-determination.

**All you did was.....social work**

## Community Offerings



WICHITA STATE UNIVERSITY  
School of Social Work  
Fairmount College of Liberal Arts and Sciences

### 1 Credit Hour Summer Course Offerings

(Registration required through the  
WSU Registrar's office)

#### International Social Work

June 3 & 4, 2006  
8:00 - 5:00

WSU West Campus  
37th & Maize Rd

#### Social Work Practice with the Aging

June 17 & 24, 2006  
8:00 - 5:00

WSU West Campus  
37th & Maize Rd

#### Financial Management for Social Service Organizations

July 7 & 8, 2006  
8:00 - 5:00

WSU West Campus  
37th & Maize Rd

For more information call the  
WSU School of Social Work  
office at 316-978-7250.

Nurses  
Social Workers  
Physician Assistants  
Physicians  
Dietitians  
Therapist  
Facility Staff &  
Administrators

## Hot Topics

FREE CONTINUING  
EDUCATION

PROGRAM

May 23, 2006



**Cosponsored by:**  
Faith Home Health  
and Hospice, LLC,  
American Red Cross,  
LifeCare Nursing Facilities,  
Therapeutic Medical Supply,  
Knoll Patient Supply, Inc.,  
and Hill Rom

#### Healthy People 2010

May 23, 2006  
11:00 am - 4:00 pm

American Red Cross  
1900 E Douglas

Session topics Include:

- *Healthy People 2010: A broad framework to viewing health*
- *Access to Health Care*
- *Built Environments and Walkability*
- *The Future of Ethics in Healthcare*

RSVP by Friday, May 19th  
316-618-6803 ext. 250

If you know of a community offering that  
should be included in our newsletter, please  
contact Trisha at [trisha.wenrich@wichita.edu](mailto:trisha.wenrich@wichita.edu)  
or (316) 978-6518.

## Social Work Employment Offerings



YOUTHVILLE, a not-for-profit organization,  
is currently seeking qualified applicants for the  
following positions in our Wichita office:

- **Case Manager** – BSRB Licensure re-  
quired
- **Staff Assistant** – FT and PT
- **Individual Comm. Support Worker** –  
PRN
- **Case Plan Case Administrators** - FT
- **Family Support Worker** - FT

We offer a great benefit package including  
medical, dental, and prescription drug plan, as  
well as a matching 403(b) retirement plan.  
Please fax your resume to HR at (316) 283-  
9540, email to [go2work@youthville.org](mailto:go2work@youthville.org), or  
mail to Youthville Attn. HR, 4505 E. 47<sup>th</sup>  
Street South, Suite 200 Wichita, KS 67210.

For additional information visit our web site at  
[www.youthville.org](http://www.youthville.org).

Youthville  
EOE/M/F/D/V



#### Community Outreach Case Manager for HIV/AIDS

Full-time position responsible for community  
HIV/AIDS education. Bachelor's degree re-  
quired; BSW preferred. Must be bi-lingual  
(Spanish). Two years social service experi-  
ence; strong cross-cultural communication and  
organizational skills required. Knowledge of  
HIV/AIDS disease and care management sys-  
tems is preferred. We offer excellent benefits  
and challenging work. Qualified applicants  
may send resume and salary requirements to:

KU School of Medicine-Wichita  
Medical Practice Association  
Attn: Human Resources  
1010 N. Kansas Room 3049  
Wichita, KS 67214  
FAX (316)293-1882  
EOE/MFDV



## Social Work Employment Offerings (continued)



COMCARE  
Sedgwick County...  
working for you

COMCARE's Community Support Services (CSS) offers a wide range of services to adults who have a severe and persistent mental illness. Currently, COMCARE-CSS is looking to fill several positions of employment within the **Case Management** program. Persons serving in this position are the primary care coordinators for approximately 16-20 individuals.

Primary responsibilities as noted in the official job description: *"Will engage consumers in a working relationship, assess consumers personal strength, resources, desires, needs and barriers related to specific life domains of independent living, vocational/educational, social support, leisure/recreational and health. Assist in developing short and long term goals and work with consumer in accomplishing these goals. Collaborate with multidisciplinary treatment team to achieve goals. Teach skills related to goals in a one-to-one setting. Provide assistance in completing applications for benefits and resources. Accompany consumers to appointments as needed. Assist in admissions and discharges, including involuntary hospitalizations. Complete documentation as required and apply policies and procedures of the agency according to specifications. Participate in group supervision and other staff activities related to training and service delivery."*

We feel that we offer our staff many opportunities to grow in the areas of working with a multi-disciplinary team, coordinating care for disabled persons, resource acquisition, client advocacy and empowerment, developing interpersonal communication skills, acquiring knowledge of the symptoms of mental illness and the corresponding treatments/medications for such illnesses, etc.

Persons interested in applying for the position can go Sedgwick County's official employment website ([www.hrepartners.com](http://www.hrepartners.com)). The position can be found in the Sedgwick County section under COMCARE. The official title of the position is "Field Case Manager – CSS". If there are questions about the position please feel free to contact Curt West – Director of CSS Case Management – at 660-7906 or e-mail at [cwest@sedgwick.gov](mailto:cwest@sedgwick.gov).



KVC Behavioral HealthCare, Inc., is a private, not-for-profit organization which provides an integrated system of services for emotionally and behaviorally impaired, abused, neglected, runaway and homeless children.

### Employment Opportunities

**Case Manager** – Facilitate direct services, safety, permanency and well being for children who have been removed from their homes due to abuse or neglect. Candidates must have Bachelor's degree in Social Work and licensure from the Kansas Behavioral Sciences Regulatory Board.

**Therapeutic Case Manager** – Provide direct services and therapy to families when children have been removed from their homes due to abuse or neglect. Average caseload is 12 children out-of-home. Candidates must have Master's degree and licensure from the Kansas Behavioral Sciences Regulatory Board.

**Intensive In-Home Therapist** - Provide aftercare services to parents and children who have been reintegrated following foster care. Intensive in-home counseling and aftercare services support families for one full year following reintegration. Candidates must have Master's degree and licensure from the Kansas Behavioral Sciences Regulatory Board.

All candidates must be at least 21 years of age and have a valid driver's license. Therapeutic Case Manager and Case Manager positions are available now in Atchison, Kansas City, Lawrence, Leavenworth, Lenexa, Lyndon & Topeka. Intensive In-Home Specialist Positions are available now in Kansas City and Leavenworth. For a complete list of positions, go to [www.kvc.org](http://www.kvc.org). For more information on Kansas licensure, please contact the BSRB at [www.ksbsrb.org](http://www.ksbsrb.org).

Send resumes to:

KVC Behavioral HealthCare, Inc.  
Attn. Gabrielle Darrow  
21350 W. 153<sup>rd</sup> Street  
Olathe, KS 66061  
Phone 913-322-4963  
Fax 913-621-5631  
[hr@kvc.org](mailto:hr@kvc.org)



Building Brighter Tomorrows for Families and Children

### SOCIAL WORKER

TFI Family Services, a state wide behavioral health/child welfare agency, has an immediate opening for a **Social Worker** in our Resource Family Services Department based in our **Wichita** or **Garden City** offices. Bachelor's degree in Social Work and license required. Position will work directly with foster families and youths placed in those foster homes. TFI Family Services offer:

- Paid Holiday, Vacation, Sick Days
- Paid overtime and longevity bonus
- 401(k) Employer Matched Contribution Plan
- Health and Dental Insurance

If you are interested in a career with a dynamic and progressive lead agency with the most accomplished professionals in the business of caring for children, please e-mail your resume to [melissar@the-farm.org](mailto:melissar@the-farm.org) or mail to Melissa Ratzlaff, Human Resources Supervisor, TFI Family Services, PO Box 2224, Emporia, KS 66801. TFI Family Services is an Equal Opportunity Employer and Service Provider.

### FAMILY PERMANENCY CASE MANAGER

TFI Family Services, a statewide behavioral health/child welfare agency, has an immediate opening for full time **Family Permanency Case Manager** in our **Ark City**, **El Dorado** or **Emporia** offices. LBSW, LMSW, LMLP, LMFT, or LPC required; or obtain licensure within 60 days of hire. Positions will be responsible for all permanency and contractual requirements for cases assigned and work directly with youths and biological families. To the qualified applicant, TFI Family Services offers competitive salary, paid overtime, longevity bonus, health and dental insurance, a 401(k) employer matched contribution plan, and other competitive benefits. If you are interested in a career with a dynamic and progressive lead agency with the most accomplished professionals in the business of caring for children, please send a letter of interest and resume by e-mail to [melissar@the-farm.org](mailto:melissar@the-farm.org) or mail to Melissa Ratzlaff, Human Resources Supervisor, TFI Family Services, PO Box 2224, Emporia, KS 66801. TFI Family Services is an Equal Opportunity Employer and Service Provider.

## Social Work Employment Offerings (continued)



As a Social Worker Specialist, you will be able to assess child abuse/neglect by interviewing children in their home and in the community. You will also be able to initiate referrals

to family preservation or foster care contractors. You will have the opportunity to work with a variety of families in the community and be a part of family centered practices. You will have numerous opportunities to network and volunteer, not only within the agency and its many components, but with other agencies as well.

There are many other positives to this position. The State of Kansas provides their employees full benefits, a safe work environment, and paid holidays. Employees have the flexibility to re-arrange schedules for personal appointments. If you are energetic, have a desire to help people in need, can handle deadlines, and want to enjoy the flexibility of State employment, we highly recommend you apply now. To look into this employment opportunity, call or email Employee Relations Director Lolitta Tucker at 337-7262 or [LRT@srskansas.org](mailto:LRT@srskansas.org) or Assistant Regional Director of Staff Development Deborah Willis at 337-6742 or [DAW@srskansas.org](mailto:DAW@srskansas.org).

We are not accepting applications for Social Worker Specialists at this time. However, if someone would like to start in a lower position and apply for a Social Worker position as it becomes available, they are welcome to do so and would have some employee-preference points to help move them to their preferred role. Here is our current opening for an Administrative Assistant:

The person selected for this position will provide quality customer service and clerical support in all areas of Child Support Enforcement, in accordance with the agency missions and goals. There are many positives in this job. You will have numerous opportunities to network and volunteer not only within the agency and its many components, but with other agencies. The State provides you with full benefits, a safe work environment, paid holidays, weekends off, and no mandatory overtime. Employees have the flexibility to re-arrange schedules for personal appointments. If you are energetic, have a desire to help people in need, can handle deadlines, and want to enjoy the flexibility of State employment, this job is for you. Minimum Requirements: Six months experience in general office, clerical and administrative support work. Additional consideration given to bi-lingual applicants.

Priority will be given to those with Employee Preference. SRS is an equal opportunity employer committed to a diverse workforce. You may apply online at <http://jobs.ks.gov>. You may also apply at 230 E William, Human Resources on the 4th floor, Wichita, KS 67202. If you need additional information, please contact Candi Neal at 316-337-6577.

**Higher Ground Mission:** Empowering culturally diverse youth and adult to recover their lives and hope by providing innovative and effective prevention, treatment and counseling for drugs, alcohol abuse and related life challenges.



HIGHER  
GROUND

**Substance Abuse Clinical Coordinator** — Higher Ground is looking for an up-beat leader with superior organizational skills and a sense of humor. AAPS Certification preferred. Master's degree in social services/psych field. Experience with adult/adolescent treatment and administration. Demonstrated leadership skills. KAAP Certification and Spanish skills VERY DESIRABLE. Proficient computer and writing skills. Supervise counselors working days and evenings. Job includes weekend activities 1x/mo. with clients.

Description and Duties of Job:

- Outpatient Adolescent Substance Abuse Counseling
- Assessment, diagnostic and referrals of adolescent clients. Develop an individual treatment plan and discharge plan addressing referral/networking and continuing care needs and relapse prevention plans in coordination with Case Managers.
- Conduct individual counseling and groups processes for adolescent clients and their family members.
- Provide education and facilitate both traditional and experiential group processes related to culturally specific issues, substance abuse, family issues, continuing care and relapse prevention to clients.
- Present lectures and educational sessions on coping/life skills, health skills and HIV Disease prevention, family management as needed.
- Responsible for maintenance of clinical files and records in accordance with licensure standards/
- Conduct follow-ups with discharged clients to determine appropriateness and success of continuing care program.
- Participate in Clinical staffings facilitated by Clinical Coordinator.

- Attend all staff meetings and training session.
- Presentations, public relations with referral sources, community resources and agencies interacting with program.
- Marketing and increasing community awareness of the program.

**Adolescent Counselor** — AAPS Certification or course work toward preferred college degree in social services/psych field. Experience with adult/adolescent treatment. KAAP certification and Spanish skills VERY DESIRABLE. Proficient computer and writing skills. Must be willing to work 3 evenings/wk. Job includes weekend activities 1-2x/mo. with clients. Looking for up-beat counselor. Ropes/challenge facilitator skills desirable.

Description and Duties of Job:

- Outpatient Adolescent Substance Abuse Counseling.
- Assessment, diagnostic and referrals of adolescent clients. Develop an individual treatment plan and discharge plan addressing referral/networking and continuing care needs and relapse prevention plans in coordination with Case Manager/s.
- Conduct individual counseling and groups processes for adolescent clients and their family members.
- Provide education and facilitate both traditional and experiential group processes related to culturally specific issues, substance abuse, family issues, continuing care and relapse prevention to clients.
- Present lectures and educational sessions on coping/life skills, health skills and HIV Disease prevention, family management as needed.
- Responsible for maintenance of clinical files and records in accordance with licensure standards.
- Conduct follow-ups with discharged clients to determine appropriateness and success of continuing care program.
- Participate in Clinical staffings facilitated by Clinical Coordinator.
- Attend all staff meetings and training sessions.
- Presentations, public relations with referral sources, community resources and agencies interacting with program.
- Marketing and increasing community awareness of the program.

For more information call Shirley Toy at 316-262-2060. Send resume to Shirley Toy, Higher Grounds, 247 N Market, Wichita, Kansas 67202 or e-mail [Jessica@higherg.org](mailto:Jessica@higherg.org).

## Social Work Employment Offerings (continued)



*The Training and Evaluation Center of Hutchinson*

**Service Coordinator**

The Training and Evaluation Center of Hutchinson has an opening for a Service Coordinator. This position has the responsibility of assisting individuals with disabilities and their support networks to identify, select, coordinate, obtain, and use both paid services and natural supports as may be available to enhance the individuals independence, integration, and productivity. Requirements include knowledge in the areas of behavior modification resources and processes, ability to implement a person centered planning process, and the ability to assist persons served in funding and applying for services. This individual will act as an advocate for individuals with developmental disabilities.

**Qualifications:** A bachelor's degree in social work, psychology, vocational rehabilitation or related field is required.

**Benefits include:** health and dental insurance, life insurance, disability insurance, two weeks paid time off, ten paid holidays, and KPERs retirement.

Interested applicants may apply in person or online at

[www.techinc.org](http://www.techinc.org)

Go to career link for on-line application

**The Training and Evaluation Center**  
1300 E. Avenue A \* Hutchinson, KS 67501  
620-663-1596

or fax a resume to 620-663-1293  
e-mail: [hr@techinc.org](mailto:hr@techinc.org)



**Full Time Foster Care Social Worker/LBSW** with experience in child welfare field. This social worker must be able to work some evenings and be on call periodically. Great fringe

benefits. Resume to: Marie Dolce, 350 N. Market, Wichita, Kansas 67202 or email to: [Marie\\_Dolce@USC.salvationarmy.org](mailto:Marie_Dolce@USC.salvationarmy.org)

**PT Youth Care Workers** that want to help youth in our residential program make positive changes. Gain experience in the social services field and teach social skills using a behavioral model. Must be at least 21 years of age, must pass a KBI background check and possess a High School diploma or equivalent. Prefer some college or experience working with youth. Most possess a concern for youth and a strong desire to work in the human services field. Apply at The Salvation Army Youth Services, 350 N. Market, Wichita, Kansas 67202.

## Colloquium, Phi Alpha and All School Assembly (continued)

*(Continued from page 1)*

students did a wonderful job, and were quite impressive.

The Bachelor of Social Work students also had a part of the day with their poster presentations.

Phi Alpha Honor Society held their induction ceremony, inducting 18 BSW students and 6 MSW students. This was the first year for MSW students to be eligible for Phi Alpha.

At the All School Assembly, we honored our graduating classes: 54 BSW students and 49 MSW students.

Mrs. Gloria Tuttle received the "Partner in Social Work Award." Gloria Tuttle represents the ideal of partnership and commitment to the continued development of our social work students and faculty. She and her husband, Edward Tuttle, the first Director and Founder of the WSU program, have provided financial support for students and faculty, but most importantly, she has personally become involved with helping students attend and graduate as social workers. She is a gracious and caring person, and was are delighted to recognize her major contributions to our school. She is a true partner!

At the end of the assembly, we had a stroll down memory lane with a marvelous slideshow put together by Dr. GlenMaye. The slideshow brought a lot of laughter, a few tears, and a lot of memories.

After the Assembly was a reception with cake, cookies, punch and a lot of conversing and laughter. It was a lot of fun!



Mrs. Gloria Tuttle receiving "Partner in Social Work Award" from Dr. Barrett.

Congratulations to the following students who were inducted into Phi Alpha:

### MSW Students:

|                   |                   |
|-------------------|-------------------|
| Debbie Back       | Kelli R. Isaacson |
| Shealah M. Gulick | Dawn Miller       |
| Sylvia Hernandez  | Glenn K. Sherwood |

### BSW Students:

|                        |                      |
|------------------------|----------------------|
| Kala Adam              | Sarah D. Kerr        |
| Donna E. Becker        | Ashley M. Kliever    |
| Julie O'Dell Cleveland | Carissa M. Kline     |
| Megan Ewing            | Christina Lowe       |
| Jessica Forrester      | Becca Murfin         |
| Shala Foster           | Susan G. Rikli       |
| Delores (Deb) Heck     | Amanda J. Shuey      |
| Dru Heffron            | Mary B. Ternes       |
| Elisha D. Hinkle       | Kristie J. Valentino |



MSW Advanced Generalists at the Colloquium





**WICHITA STATE  
UNIVERSITY**

*Fairmount College of  
Liberal Arts & Sciences*

**School of Social Work**

1845 Fairmount  
Wichita, KS 67260-0154

Phone:  
(316) 978-7250

Fax:  
(316) 978-3328

E-Mail:  
[socialwork@wichita.edu](mailto:socialwork@wichita.edu)

Website:  
[www.wichita.edu/socialwork](http://www.wichita.edu/socialwork)

---

## Mark Your Calendar!

### Upcoming Dates:

May 19.....School of Social Work Advisory Board Mtg  
May 22-June 2 .....Summer Pre-Session Classes  
June 5—July 28 .....Summer Classes

# Summer Vacation

August 17 .....Fall Semester Begins  
August 25 .....Field Instructor Training  
August 25 .....Social Work Convocation  
August 29 .....WSU Pep Rally / Convocation

# Back to School!



# Glimpses from the MSTW Colloquium

