



WICHITA STATE
UNIVERSITY

School of Social Work
Fairmount College of Liberal Arts and Sciences
1845 Fairmount, Wichita, KS 67260-0154
(316) 978-7250



You are invited to:

The School of Social Work
Holiday Party

Friday, December 9, 2011

4:00 - 5:30 pm

539 Lindquist Hall

We welcome students, alumni, field faculty, and other interested parties to help us celebrate the end of the Fall semester and the coming holidays.

Hope to see you there!

Inside Stories

- [Director's Ponderings](#) 2
- [MSW Moment](#) 2
- [Field Notes](#) 3
- [Phi Alpha](#) 4
- [Faculty Accolades](#) 4
- [Community Events](#) 5
- [Volunteer Opportunities](#) 6
- [Employment Offerings](#) 7
- [Mark Your Calendar](#) 9



As I Ponder, Deep Thoughts With the Director Brien Bolin Director of the School of Social Work

brien.bolin@wichita.edu

Greetings!

November is here, the holiday season is beginning and the holiday break is rapidly approaching. Let us not forget ourselves in the hustle and bustle. As with any semester end, students are completing their courses and professors are preparing their finals and grading papers. With the holiday "get-togethers," "Black Friday" and "door busters," family and friends are on our minds. All while we are all busy with school, work, family and other aspects of our lives. These are recognizable observations.



What should not go by unrecognized is that students and their families, professors and their colleagues, the School of Social Work, the Uni-

versity, and the public must have agreements about how to live and work together. Without these agreements, society cannot exist. Societies must work together to be supportive, recognizing others as well as yourself, and cooperate with each other. This is how any well-organized society flourishes.

The Holiday season reminds us of these agreements/realities. The core values of social work, just as societal agreements, call us to reach out with care and compassion, respect for other's dignity and worth, working together, service, respect for others, the importance of relationships, and integrity (NASW Code of Ethics, 1996). We should not forget these core principles, especially now with the needs of those around us, communities, the nation and the

world. The realities of life, work, and being a student should not drive away the core principles of who we are, should be, or how we should treat others.

So, as you round out 2011 and get ready for new beginnings, let us remember to cooperate and coexist. Many of life's situations are fleeting. Life's situations may be difficult; however societal agreements can make life more satisfying and enjoyable. Consequently, work together, cooperate, enjoy your time off, nurture relationships and respect others as you live your life with integrity.

As you plan your holiday gatherings and celebrations, do not forget the School of Social Work Annual Holiday Party on December 9th.

MSW Moment Orren Dale MSW Program Coordinator

orren.dale@wichita.edu

It was 1964...Some of you may recall the time. Most of you have heard of it.



John Kennedy was newly martyred; Dr. King and Bobby were still alive. We were about to elect Lyndon Johnson to succeed Kennedy in his own administration. Just ahead lay the Great Society, George Wallace, and the Berlin Wall. Unforeseeable then was a ten year war in Vietnam, the "police riot" at the Chicago Democratic convention, and Woodstock. The Age of Aquarius was still half a decade away.

Bob Zimmerman, a skinny kid from Minnesota, had just come out with his first album (remember albums?) of original songs. Zimmerman, the budding songwriter laureate of the age, had taken the name of Dylan Thomas, the chronicler of an earlier age, who had written...

*Do not go gentle into that good night,
Old age should burn and rave at close of day;
Rage, rage against the dying of the light.*

The poet's challenge to us, the idea that we owe even the last of our dying energy to the service of life, infused the wistful balladeer who became Bob Dylan. Bob Dylan was a young man with an old man's soul, and a talent for putting his finger squarely on the pulse of his time, and to some degree all time.

All around him, Dillon observed the old order passing. The complacent 50's gave way to the turbulent 60's. Sex, drugs and rock and roll replaced Ozzie and Harriet. Tune in, turn on, drop out became the mantra of the age. The turbulent and changing times caused us all to become familiar with the term, "future shock."

Young Bob Dylan wrote these words...

*Come senators, congressmen
Please heed the call
Don't stand in the doorway
Don't block up the hall
For he that gets hurt
Will be he who has stalled
There's a battle outside
And it is ragin'*

*It'll soon shake your windows
And rattle your walls
For the times they are a-changing'.*

For a while we were more comfortable with change. Now the moving finger seems to have swung back around to a sentiment that calls us to seek the middle, reject the new and exotic, and seal the borders. Social work, charged with the fire of the 60's, now faces the challenge of those who claim to lead the nation by saying that "if you are poor, it is your own fault." "If you came from somewhere else, go back home." If you scare the man, you can be tortured and imprisoned in a rented country elsewhere. The times, they are a changin' back to the xenophobic 50's.

I thank God daily that I come to work with young people who rage against the dying light, trying to rebuild our profession in service to the needy and excluded who have not, in my long life, ever been more at risk. We need to find the minstrel who will sing the songs of our troubled times.

Field Notes

Sabrina Perez Glatt & Shaunna Millar
Director & Associate Director of Field Practicum

sabrina.perezglatt@wichita.edu
shaunna.millar@wichita.edu

It always seems hard to believe that the semester is almost over. Especially with the Kansas weather this season.

What isn't hard to believe is the great instruction our students have received in their agency assignments in practicum and the orientation and work the students have been doing in the agencies who have partnered with us in field instruction.

Only representative of many students doing a great job this semester: **BSW** - Ashanti Carr at



Big Brothers Big Sisters; Nathaniel Camp at Juvenile Detention Center; and Haley Rojas at COMCARE. **Foundation MSW** - Nichole Bosch at CIS, Cloud Elementary and Gayla Oldfather at Salvation Army. **Advanced Generalist MSW** - Laura Shepherd at Cerebral Palsy Foundation; Candra Burton at Wichita Child Guidance Center; Tralana Jones at USD 259 McLean Elementary; and Cindy Hernandez at Veterans Administration.

It is hard to stop with these few, as so many students are doing a tremendous job. Thank you to our students, and to the social workers in these

agencies for your service. We know you help to improve the quality of life of the people in the community!

A quick note to our agency providers. The practicum program will begin contacting agencies for placement for the 2012-2013 Academic Year after January 12th.

On behalf of Shaunna Millar and myself, a Joyous Holidays for the upcoming season!

Thank You All,

Sabrina Perez Glatt, Director of Field Practicum



Phi Alpha Honor Society - Beta Delta Chapter - Maggie Green, President

Hello future social workers,

Phi Alpha Honor Society would first of all like to thank all the students who volunteered this semester for the Hygiene Bag Project for the months of September, October and November. Through your volunteerism we were allowed to service over 400 homeless individuals in Wichita with hygiene bags. I would like to give a special thanks to Secretary/Treasurer Deborah Butner and Vice-President Allison Collazo for their great leadership and collaborative support during this semester's demanding needs of the Hygiene Project.

During the month of October, we were selected to present the Hygiene Bag service project in poster board form at the National Conference of Social Work Education in Atlanta, GA during the Phi Alpha National Honor Society Annual Meeting. We won first place for the poster board presentation. This is such a great win for WSU and the Social Work program!!!

Next semester, we plan to continue servicing those in need in our Wichita community. We look forward to continuous collaboration among all students for service projects next semester, so please stay posted for scheduled service projects in the near future.

Have a great winter break and Happy 2012!



2011-2012 MSW Phi Alpha Officers

President: [Maggie Green](#)

Vice President: [Allison Collazo](#)

Secretary/Treasurer: [Deborah Butner](#)

Faculty Advisor: [Tim Lause](#)



Faculty Accolades

Kyoung Lee presented two papers at the 2011 Council on Social Work Education (CSWE) Annual Program Meeting.

Lee, K.H., Roh, S.H., & Yoon, D.P. (2011). *Stress, coping and health among older adults in assisted living facilities*. Poster presentation at the 2011 Annual Program Meeting (APM) of the Council on Social Work Education (CSWE), Atlanta, Georgia.

Yoon, D.P., Lee, K.H., & Roh, S.H. (2011). *Relationships among spirituality, religious practices, personality, and health among diverse faith traditions*. Oral presentation at the 2011 Annual Program Meeting (APM) of the Council on Social Work Education (CSWE), Atlanta, Georgia.

Kyoung H. Lee was also elected as president of the Korean American Social Work Educators Association (KASWEA) at the CSWE APM, including about 60 Korean American faculty members and over 200 students in Ph.D. programs in the USA. The KASWEA is affiliated with the CSWE.

Congratulations!

Dr. Lisa Hines has done a book review: Hines, L.D. & Yee-Melichar, D. (2011). *Nursing Homes and Assisted Living: The Family's Guide to Making Decisions and Getting Good Care, 2nd ed.* By Peter S. Silin, Educational Gerontology, 37:9, 833-834.

To view this article:

<http://dx.doi.org/10.1080/03601277.2010.487763>

Dr. Hines has also had an article accepted for publication in the *Journal of Qualitative Social Work*, that will be titled, *The Treatment Views and Recommendations of Substance Abusing Women: A Meta Synthesis*.

ABSTRACT - The purpose of this review is to

synthesize qualitative data describing the substance abuse treatment views and recommendations of addicted mothers. The meta synthesis approach is a systematic comparison of qualitative studies all asking the same or similar questions and seeks to result in theory that cuts across all of the studies. Keyword searches of online databases Academic Search Premiere, PubMed, and Google Scholar were conducted using the keywords: perinatal substance abuse, women and substance abuse, parenting and substance abuse to locate qualitative studies. The author also searched references of qualitative studies to access additional articles. Studies were included if they were qualitative, included excerpts from participants who

discussed issues about perinatal substance abuse treatment views and recommendations and were published between 1992 and 2010. 30 studies were reviewed. Evidence suggest that social marketing of substance abuse services that emphasize comprehensive services provided by caring non-judgmental staff is central to motivating women to enter treatment. Positive client and staff interactions are significant to retaining women in treatment. Culturally competent staff can motivate women who are considering treatment. Gender specific substance abuse services are recommended.

Keywords: Substance abusing women; substance abuse; substance abuse treatment, meta synthesis.

Community Events



The Saint Francis Community Services **Strengthening Families Program** will present classes in Barton, Ellis, Finney, Ford, Pawnee, Saline & Seward SRS Service areas.

The Strengthening Families Program (SFP) is a parent, youth, and family skills building curriculum designed to prevent teen substance abuse and other behavior problems, strengthen parenting skills and build on family strengths.

The program is delivered with seven session for parents and youth, ages 9½ to 14 years old using realistic videos, role-playing, discussions, learning games, and family projects. We provide free child care for children under age 9½, a free family style meal each class night and incentives such as gift cards and drawings for those attending.

The SFP has proven effective in delaying the onset of adolescent substance use, lowering levels of aggression, increasing the resistance to peer pressure in youth and increasing the ability of parents/caregivers to set appropriate limits and show affection to and support of their children.

A special feature of the SFP is that parents and youth work and learn together. The program is designed and can be used with ethnically diverse families in rural and urban settings and is scientifically evaluated and shown to be effective.

For more information contact Jackie Sweany, Program Coordinator, at (785) 643-5310 or by email at jacque.sweany@st-francis.org.



American Foundation for Suicide Prevention's
13th Annual
International Survivors
of Suicide Day



Each year on the Saturday before Thanksgiving, thousands of survivors of suicide around the world gather together for mutual support and practical guidance on coping with grief. Saturday, November 19th, 9:00 am to 1:30 pm, the Sedgwick County Suicide Prevention Coalition and Via Christi will host the annual National Survivors of Suicide Day webcast and conference.

If you have lost someone to suicide, please join us

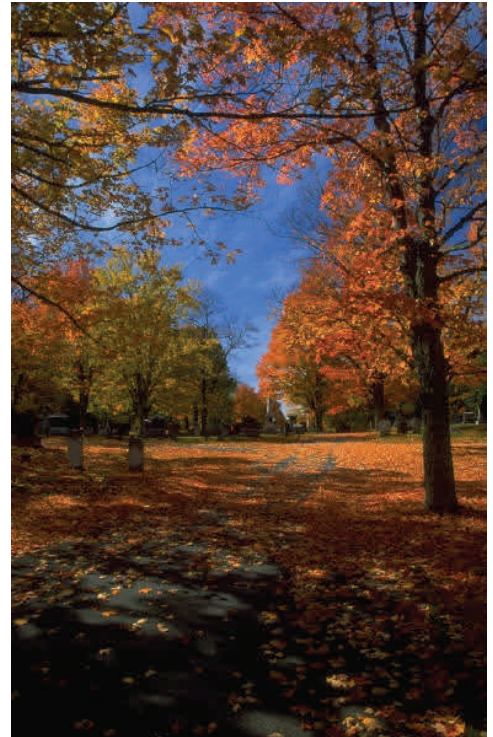
Saturday, November 19, 2011
Via Christi Hospital, 3600 E Harry, Wichita
McNamara Center, 3rd Floor

For more information, or to pre-register, contact:
Denise Van Dorn at (3216) 858-0216 or
denise.vandorn@via-christi.org

Schedule:

9 am - Check in and registration
9:30 - 11:30 am - Local Panel Discussion
Noon to 1:30 pm - Survivors of Suicide National Broadcast

No charge to attend. Continental breakfast and a light lunch will be served.



Find the School of Social Work on

facebook

WSU School of Social Work page:

www.facebook.com/wsusw

WSU School of Social Work Alumni page:

www.facebook.com/swalumni

Volunteer Opportunities

Episcopal Social Services

We need some help in the kitchen at Episcopal Social Services. With more and more people coming in for a hot lunch, extra hands would be much appreciated. The kitchen volunteers are here between 9:30 AM and 1:00 PM every day. If students want to pick a day to work, or spread time out over the break, that will work.

For more information, contact Lillian at lillian.gattis@esswichita.org or (316) 269-4160.



The Self-Help Group Team at Wichita State University's Center for Community Support and Research (CCSR) is looking for a group of civic-minded students with excellent telephone skills to help update its online searchable database of 2,000 local and national self-help groups. Students would call group leaders, verify information and update data in the computer. These self-help groups have been formed to address a broad range of issues that affect Kansans, including alcohol addiction, parenting, caregiving, and physical and mental health concerns.

To volunteer, students must:

- Be currently enrolled in at least three hours of courses at WSU;
- Have transportation to and from the downtown office at 358 N Main;
- Commit to at least four hours weekly between 8 am and 5 pm, preferably in two-hour time blocks during the fall semester.

The Self-Help Group Team is working with Kansas Health Solutions and the Kansas Medicaid Self-Help Initiative to better promote self-help groups to Medicaid providers and strengthen the effectiveness and efficiency of the Kansas mental health system.

The Center for Community Support and Research (CCSR) at Wichita State University has served Kansas for over 25 years. Our interdisciplinary staff works closely on applied research and innovative interventions with non-profit organizations, state and local governments, community coalitions, self-help groups, faith-based organizations and schools to improve community outcomes.

For more information, contact Angela Gaughan at the Center for Community Support and Research at (316) 978-3327 or angela.gaughan@wichita.edu.



The Kansas Department of Social & Rehabilitation Services, Wichita Regional Office, needs volunteers to organize case files for storage. The ideal volunteer could give 2-3 hours per week for 2-3 months. Training is provided. The volunteer would need to pass the security clearance. For more information, contact Debbie Willsie at (316) 337-6644 or debbie.willsie@srs.ks.gov.



Resource Room Volunteer - Youthville needs volunteers to help sort, organize and pack donated clothing items for children in Youthville's care.

Local Transport Volunteer - Youthville needs volunteer drivers to transport children and youth to and from varied appointments, home visits, etc. within the Sedgwick county area. Volunteers will need to drive their own vehicles and pass a background check.

Christmas Connection Volunteers - Youthville needs volunteers to help sort donated Christmas gifts for kids in foster care system, from November 30th - December 14th, Monday - Friday, 5:00 pm - 7:30 pm. All volunteers will need to sign a confidentiality statement of understanding.

If interested in any of the Youthville Volunteer opportunities, please contact Antoine Morrison, Volunteer Manager at (316) 529-9164 or amorrisson@youthville.org.



Don't Miss The Bus!!
Stuff The Bus 2011
 November 29 - December 3



Volunteers Needed to help unload the bus, sort, mark, box, and stack the items that go to our 2 domestic violence shelters, The YWCA Women's Crisis Center and Catholic Charities Harbor House.

Volunteers needed Tuesday through Thursday, November 29 - December 1 from 11 am - 6 pm and Saturday, December 3 from 2 - 8 pm

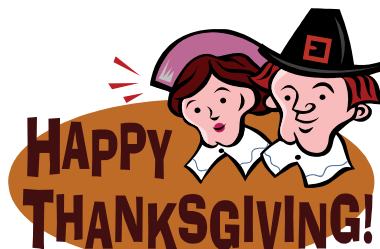
For more information or to sign up, please call Cathy at (316) 263-2313 or Haley at (316) 263-6000.



Volunteer Opportunities at Rainbows United

- **Special Events Intern - Spring 2012**
Please see full job description on the volunteer page at www.rainbowsunited.org.
- **Quality Assurance Members**
Travel with Rainbow's staff to homes to provide quality assurance by observing provider's care and performing an evaluation, must be 18 or older.
- **Behavior Review Committee Member**
Review incident trends and make recommendations on behavior plans; related experience or education required; this committee meets 5 times/year

Please contact [Kayla Hamilton](mailto:Kayla.Hamilton), Volunteer Coordinator, at (316) 588-3422 for more information.



Employment Offerings



Be Different. Do what you love.

Use your natural gift of education and persuasion to help patients and their families cope with the effects of kidney disease. Life on dialysis can be a difficult transition for many patients - and you'll be there to support and advocate for them. In this vital role, you will help patients understand their rights and responsibilities, and guide them in managing the physical, mental, emotional and financial demands of End Stage Renal Disease.

If you love patient-centered health care with real relationships inside a company that encourages fun on and off the clock, the DaVita is the place for you.

We are seeking a licensed social worker who can communicate effectively and compassionately with all types of physically and mentally disabled patients and their families. This role requires a master's degree in social work (MSW) from a school of social work accredited by the Council on Social Work Education. Keen interviewing and assessment skills, impeccable attention to patient confidentiality, and at least two years of experience as a social worker in a healthcare setting preferred. Demonstrated knowledge of government and private insurance programs.

Why wait? Explore a career with DaVita today. Go to <http://careers.davita.com> to learn more or apply. Or send your resume to dez.hill@davita.com.



The Training and Evaluation Center of Hutchinson

Service Coordinator - Targeted Case Management
Do you enjoy working with people? Are you looking for a rewarding career? TECH has a Targeted Case Management position available for a person who wants to make a difference.

Qualifications: A bachelor's degree in social work, psychology, vocational rehabilitation or related human services field is required. Experience working with persons with developmental disabilities preferred in addition to Microsoft Office and other computer proficiencies.

An awesome benefits packet includes: Health and dental insurance, life insurance, disability insurance, two weeks paid time off, 10 paid holidays, and KPERS retirement.

Kansas WorkReady! Certificate preferred

Interested applicants may apply at:

KANSASWORKS

609 East 14th

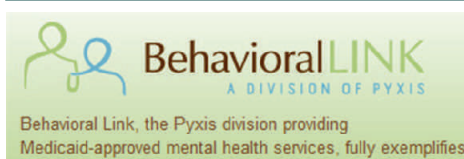
Hutchinson, KS 67501-5825

Or online at www.techinc.org

Go to career link for on-line application

Or fax resume to (620) 663-1293

Or email hr@techinc.org



Get paid to be a positive role model to children and youth!

Looking for committed men and women who desire to positively impact children in our community. Community Support Workers are needed in the Wichita Area working with youth to provide individual rehabilitation through community-based services.

Part-time, up to 32 hours per week.
\$8.35 - \$10.75 per hour. Gain valuable clinical skills working with children and families.

Must have reliable transportation, a high school diploma or equivalent and meet all hiring qualifications. Extensive training and support will be given to those who are hired. Background checks required. EOE

Email resume to:

employment@behaviorallink.com

or fax resume to:

Pyxis, Inc., Attn: Human Resources

(316) 262-4232

Larned State Hospital

Larned State Hospital is seeking a Social Worker.

Duties include:

- Biopsychosocial Assessment
- Treatment Planning
- Discharge Planning
- Court Testimony / Court Involvement

This person serves as a member of the core treatment team.

Successful applicants must be able to attain Social Work licensure in the State of Kansas.

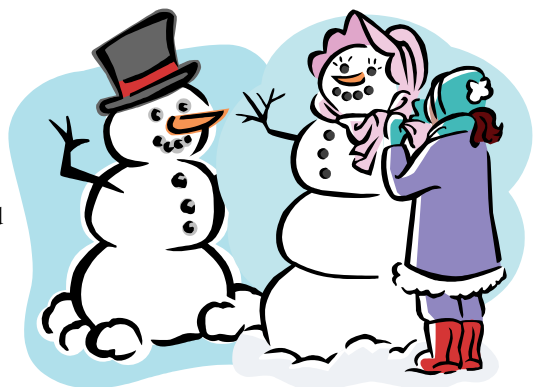
Employment Advantages Include:

- Comprehensive Benefit Package
 - * Accumulated vacation and sick
 - * Health, Dental, Vision, Prescription Insurance
 - * Flexible Spending Accounts
 - * Employee Assistance Program
 - * Deferred Compensation
 - * Retirement Benefits
- 24 hour accessibility to a state-of-the-art fitness center on campus
- On-site day care facility

Please contact Larned State Hospital Human Resource Shared Services, 1301 KS Hwy 265, Larned, Kansas 67550, (620) 285-4380 or apply online at srskansas.org. (If position is not yet posted for Pawnee County, Larned State Hospital, input position number all zeroes.)

Larned State Hospital is an EOE and VPE Employer.

The Kansas Department of SRS employs only U.S. citizens and lawfully authorized aliens who can provide evidence of their identity as required by federal law.



Employment Offerings



COMCARE of Sedgwick County is a large and progressive Community Mental Health Center providing an array of mental health and substance abuse services. We have several great career opportunities available. To view and apply for current openings with COMCARE, please visit www.HRePartners.com.

Substance Abuse Counselor - Provide substance use counseling services. Must hold a minimum of Licensed Addiction Counselor (LAC) through the BSRB. LCAC preferred. 1-3 years of experience preferred.

Case Manager I (Children's Services, Community Support Services, Center City) - Assist individuals experiencing mental illness in learning life skills and coordinating services that will help them be successful in the community. (Bachelor's degree or equivalent)

Case Manager II (SCOAP) - Provide goal-directed, medically necessary services to support adults who have a diagnosed mental illness which causes functional impairment and contributes to repeated criminal justice system contact. (Bachelor's degree or equivalent)

Part-Time Attendant Care Worker - Act as a para-professional member of the therapeutic preschool treatment team, providing support to children between the ages of 3 and 5 years old who have been identified as having a serious emotional disturbance. (High school diploma or equivalent)

Part-Time Crisis Case Manager - Work with individuals presenting with a psychiatric crisis often through answering the mental health and suicide prevention hotline. (Bachelor's degree or equivalent)



Saint Francis Community Services is currently seeking applicants for the following positions:

Social Worker, LBSW, LPC, LMSW, LMFT - Great Bend, Pratt, Garden City, Liberal. Licensed professionals to serve children and families. Provides case management for foster care reintegration.

Reintegration Therapist, LSCSW, LCMFT, LPCP - Great Bend, Garden City/Dodge City/Liberal. Assess and provide intensive in-home/clinical out-patient family service using a therapeutic model. Provide a full range of services to children/families in the SRS Reintegration/Adoption/Foster Care Homes contract to develop permanency options for the children through reunification with the family or other permanency alternatives and prevent disruption in foster care home or adoption setting.

Therapist, LMSW, LMFT, LPC - Family Preservation, Hutchinson, Pratt, Colby. Provide in-home services and case management, coordinate team staff members, resolve issues and maintain family as a whole. Must have experience working with children & family services, ability to travel, work flexible schedule, effective communication skills.

KIPP Clinician, LMSW, LMFT, LPC - Garden City/Dodge City/Liberal. The Kansas Intensive Project (KIPP) Clinician provides intervention and clinical services to parents and their children as assigned in accordance to the KIPP PMTO training and credentialing.

Resource Worker, Dodge City. Recruiting, preparing and training foster families & processing licensing paperwork. Work with resource homes to maintain placement of children in the homes. Requires Bachelors degree in Human Services, a clear MVR/KBI, experience working with children & families, dependable transportation & at least 21 years of age. Prefer BSRB licensed, certification in PS-MAPP & Deciding Together training.

Saint Francis Community Services offers an excellent benefit package and competitive wages. Must be 21 years of age and pass background checks. Send resume to lisa.trecee@st-francis.org or website: www.st-francis.org. EOE



Youthville is **HIRING!** All job opportunities are listed on www.youthville.org. After accessing the Youthville website, you will click Employment Opportunities - Job Listings - Wichita, KS which will direct you to the job description for each opening.

Clinical Services Training Coordinator, Wichita. This position requires a Master's degree and a Kansas BSRB license at the Master's level.

Special Projects Manager, Wichita. This position required a Bachelor's degree.

Treatment Foster Care Clinician, PT, Wichita. This position requires a Master's degree in social work or related field and licensed by the BSRB.

Software Developer III (2 FTE), Wichita. This position requires 4+ years experience in developing integrated software systems and a Bachelor's in Computer Science or related field preferred.

Foster Care Worker, Hays. This position requires a Bachelor's or Master's degree in social services related field. BSRB licensure required.

Case Manager - PRTE, Dodge City. This position requires a Bachelor's or Master's degree in social services related field. BSRB licensure preferred.

Youthcare Worker (8 FTEs), Dodge City. This position requires a high school diploma or equivalent. Openings in Hufford, Central B, East and West Cottages.

Cook, Dodge City. This position requires a High School diploma or equivalent.

PRN Outpatient Clinician, Concordia. This position requires a Master's degree in BSRB licensable field. Licensed to practice with supervision in the State of Kansas is required.

If you are interested in applying for any of these positions, please submit an online application at www.youthville.org.





.....
**WICHITA STATE
UNIVERSITY**

***FAIRMOUNT COLLEGE OF
LIBERAL ARTS & SCIENCES***

School of Social Work

1845 Fairmount
Wichita, KS 67260-0154

Phone:
(316) 978-7250

Fax:
(316) 978-3328

E-Mail:
socialwork@wichita.edu

Web site:
www.wichita.edu/socialwork

facebook

www.facebook.com/wsusw
www.facebook.com/swalumni

Mark Your Calendar!

Upcoming Dates:

November 23-27	Thanksgiving Recess (no classes)
November 24-25	Thanksgiving Holiday - University Closed
December 9	Study Day (no classes) School of Social Work Holiday Party
December 10-16	Finals
December 11	Fall Commencement
December 23-January 2	Holiday Closedown - University Closed
January 16	Martin Luther King Holiday - University Closed
January 17	Spring Semester begins
March 2	POWER Conference

