

WSU High School Honor Band

SEATING AUDITION MATERIAL B

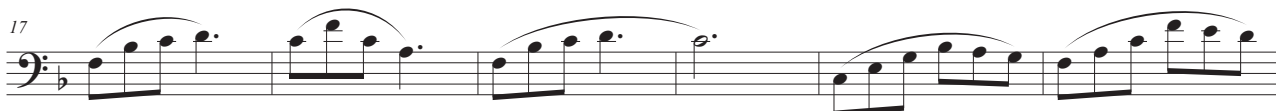
TROMBONE

PLEASE NOTE: This material is to assist in deciding chair placement for the weekend. Numbers 1 & 2 are required. Number 3 is optional. Please choose a scale and excerpt material that best represents your ability level and illuminates your best attributes. **GOOD LUCK!**

1. Any major scale two octaves slurred up and tongued down.

2. The Etude Below

Allegro Moderato ♩ = 126



Andante ♩ = 72



3. Any material from the KMEA District/State Band Audition Excerpts