

PLAYBILL®

Wilner Auditorium
Wichita State University School of Performing Arts
Wichita, KS

Wichita State University
School of Performing Arts Theatre Presents

STUPID F##KING BIRD

By Aaron Posner

Sort of adapted from Chekhov's "THE SEAGULL"



**Wichita State University School of Performing Arts
Wilner Auditorium**

PRESENTS

STUPID F##KING BIRD

By
Aaron Posner

sort of adapted from
"The Seagull"
by Anton Chekhov

original music by:
James Sugg

with

**James Earlywine
Crosby Dold
Jo Smith**

**Zac Richardson
Ella Kempker
Hayley Longacre**

**Matthew Gwinner
Morgan Holcomb
Ian Moore**

Technical Director
Ed Baker

Costume Designer
Jade Almsberger

Assist. Technical Director
Will Smith

Production Stage Manager
Alexys Porter

Wigs/Hair Designer
Rae Oquendo

Scenic Designer
David Neville

Stage Manager
Blake Grimsley

Makeup Designer
Jessica Hudson

Assist. Scenic Designer
Tamara Gagne

Intimacy Director
Molly Tully

Lighting Designer
Nick Roux

Publicity
Carson Ediger

Movement Director
Cody Proctor

Sound Designer
Julie Longhofer

Assistant Directed by
Emily Redfield

Directed by
Julie Longhofer

"Stupid F##king Bird" was developed & received its world premier in June 2013 at Woolly Mammoth Theatre Company, Washington D.C. (Howard Shalwitz, Artistic Director; Jeffrey Hermann, Managing Director)

SHOW INFORMATION

Director's Note

Stupid F##king Bird (SFB) is a play about a playwright, a passionate young playwright who wants a new way to connect “the theater” with “the audience.” Our play has a title which is designed to provoke you! Our playwright Aaron Posner has written a contemporary re-invention of Anton Chekhov’s play *The Seagull*, the 120-years-old play which helped re-invent theater at the dawn of the 20th century.

However, tonight’s play is NOT about Chekhov, nor is it about Russia in the 19th century. No knowledge of Chekhov is necessary (although there are plenty of sly winks at Chekhov for people who love his work). *Oh, and in case you were wondering, the play isn’t really about the bird.*

What I like about Aaron Posner’s plays is that he loves audiences and has a unique gift for connecting **the people on the stage** with **the people sitting in the seats**. SFB is about a tightly knit group of humans (friends and family, across different generations, older and younger) sharing time together at a summer house. By the lake. In the fall.

In real life, when you sit around with people closest to you, you talk about the real things that real people think about every day: ‘Why am I so disappointed? Why is life harder than I thought it would be? What does real love look like? And can I trust this person to love me well and not hurt me?’ These are hard questions, but they are real.

Our play is about the weight of family expectations. It’s about the need to be loved for who you are and the pain that we experience when people don’t love us the way we need them to. It’s about the desperate need that an artist has to create things which last. It’s about love, loss, and moving on.

So it’s a comedy! That is, it’s a comedy with deeply serious moments. Or a serious play with outrageously funny dialogue. It’s so funny that you might cry, and so tragic that you might just have to laugh.

SHOW INFORMATION

GUEST DIRECTOR



Julie Longhofer (BA English; Minor in Theater '89) did her undergrad work in theater with WSU giants Dick Welsbacher, Joyce Cavarozzi and Audrey Needles before earning her MA/PhD in dramatic literature and theater history from University of Illinois, Urbana-Champaign. For almost 30 years, she has directed and costumed dozens of plays and musicals, continues to perform and also serve as dramaturg, and has taught hundreds of teenagers and college students how to be stronger theater artists.

Dr. Longhofer last directed for WSU in 2001-2003 (Brian Friel's *Translations*, John Patrick Shanley's *Italian-American Reconciliation*, and Paul Rudnick's *I Hate Hamlet*) when she served as a Visiting Assistant Professor for the program. At Wichita Center for the Arts, she performed in *Our Town*, *A Doll's House*, *Macbeth*, and *Robber Bridegroom* opposite guest artist Richard White. From 2007-2019, she was the Director of Theater Arts for Trinity Academy where she directed 34 plays and musicals which were honored with dozens of Jester Awards for excellence in high school musical theater. In 2019, her program was invited to attend the American High School Theater Festival in Edinburgh. Julie was honored last month at the Mary Jane Teall Awards as Theater Educator of the Year.

Dr. Longhofer has been an Adjunct Instructor for us since 2019, teaching Theater History, Directing, and the Art of the Theater.

SHOW INFORMATION

GUEST ARTISTS

MOLLY TULLY: Intimacy Director



Molly Tully is a Wichita based theatrical artist who has worked in local professional theatre for the past 12 years. Molly's theatrical intimacy work includes MTWichita's Jersey Boys, 42nd Street, and Kinky Boots along with the Crown Arts Collaborative's Next to Normal, The Wedding Singer, and The Rocky Horror Show. She is also the Crown Arts Collaborative's 2022 Intimacy Consultant. Molly has a passion for promoting ethical, efficient and effective systems for staging theatrical intimacy and enjoys sharing her knowledge with others. In addition to being a theatrical intimacy professional, Molly is also an actor, director, choreographer, and writer. Molly would like to thank everyone at WSU School of Performing Arts for making this such an enjoyable experience and she would like to thank her family for their endless support of her passions.

CODY PROCTOR: Movement Director

Cody Proctor (BFA Theatre Perf, Minor in Dance, '06) is a Kansas City native who has worked professionally in theatre and on-camera for over 15 years. He has worked on stage at the Goodman Theatre, Chicago Shakespeare Theater, KC Repertory, Heart of America Shakespeare Festival, Music Theatre Heritage, and the Illinois Shakespeare Festival as well as the Chicago storefront theatre scene. He can be seen in commercials for the KC Royals, MO Lottery, Blue Cross Blue Shield KS, Target, Jimmy John's, Smith & Forge Hard Cider. He is a former touring member of Alithea Mime Theatre. www.codyproctor.com



SHOW INFORMATION

Time and Place

Act 1: By the Lake. In the Fall.

(10 minute intermission)

Act 2: Days later. Then 4 years later.

Run Time: 2 hours and 30 minutes

Content Disclosure:

This show has adult themes and language in addition to depictions of gun violence and attempted self-harm and discussions of suicide.

School of
Performing Arts
Season

22-23

For ticket call 316.978.3233



Wichita Children's Dance Festival Jan 29



2:00 p.m. Sun @ Wilner

Directed by Sabrina Vasquez

Pippin

Feb 23-26



7:30 p.m. Thur/Fri/Sat & 2:00 p.m. Sun @ Wilner

Music & lyrics by Stephen Schwartz

Directed by Richard Biever

Compendium

Apr 21-22



7:30 p.m. Fri/Sat @ Welsbacher

Directed by Dr. Bret Jones

WCDT Concert

Apr 27-30



7:30 p.m. Thur/Fri/Sat & 2:00 p.m. Sun @ Wilner

Wichita Contemporary Dance Theatre

featuring guest choreographer Charlotte Boye-Christensen



SCHOOL OF
PERFORMING ARTS

CAST/CREW

Cast Members

CONRAD (“CON”), a playwright	Zac Richardson
NINA, the girl next door he loves	Ella Kempker
EMMA, his mother, a famous actress	Crosby Dold
TRIGORIN, Emma’s lover and a famous writer	Jo Smith
MASH, Emma’s cook and housekeeper	Hayley Longacre
DEV, Con’s best friend	James Earlywine
DR. SORN, Emma’s brother and Con’s uncle	Matthew Gwinner
Understudies	Ian Moore, Emily Redfield, Morgan Holcomb

Production / Creative Team

Director	Julie Longhofer
Assistant Director	Emily Redfield
Intimacy Director	Molly Tully
Movement Director	Cody Proctor
Production Coordinator	Melissa Penkava Koza
Production Stage Manager	Alexys Porter
Stage Manager	Blake Grimsley
Technical Director	Ed Baker
Assistant Technical Director	Will Smith
Scenic Designer	David Neville
Assistant Scenic Designer	Tamara Gagne
Costume Designer	Jade Almsberger
Makeup Designer	Jessica Hudson
Wigs/Hair Designer	Rae Oquendo
Lighting Designer	Nick Roux
Head Electrician	Katelyn Koch
Sound Designer	Julie Longhofer
Props Manager	August Smaglik
Scene Shop Manager	Jason Flanders

CAST/CREW

Production / Creative Team (continued)

Shop Crew	Scott Cockrill, Denise Ussery, Madi Henderson, Trevor Andreasen, Will Smith, Nat Kuhn, Molly Bazar, Lilah Porcaro
Costume Shop Manager	Melissa Penkava Koza
Lead Costume Shop Assistant	Jade Almsberger
Costume Shop Assistants	Mia Dennett, Emery Downs, Blake Grimsley, Emma Lewis, Renae Richmond, Adia Tolbert
180B Costume Practicum	Ambrosia Adkins, Emily Flowers, Morgan Holcomb, Lynnaya McClure, Lilah Porcaro, Nick Roux, Andee Somogyi, Jesse Stephenson
Wardrobe Supervisor	Emma Lewis
Wardrobe Run Crew/Dressers	Emily Flowers, Andee Somogyi
Costume Maintenance Crew	Jesse Stephenson
Hair/Wig Build & Run Crew Head	Dylan Bray
Hair/Wig Build Crew	Morgan Holcomb, Renae Richmond
Wigs/Hair/Makeup Run Crew	Lynnaya McClure, Ambrosia Adkins
Deck/Shift Crew	Jessa Niblack
Props Run Crew	Lucas Shroyer, Lilah Porcaro
Light Board Operator	Reuben Scheck
Audio Engineer	Porter Jones
Sound Board Operator	Carter Stelling
Follow Spot Operator	Ben Schwartz
House Crew	Imani Perkins (Manager), Sydney Mason, Andrae Carter, Ben Bolinger, Cassie McAllister
Publicity/Poster Design	Carson Ediger
Program Design	Sophia Hillman, Stacy Salters

Mentors

Stage Management Mentor	Ed Baker
Lighting Design Mentor	David Neville
Costume/Wigs/Hair Design Mentor	Sarah Bussard
Make Up Mentor	Abbey Evans

CAST/CREW

School of Performing Arts Faculty & Staff

School Director/Assistant Professor of Dance	Cheyla Clawson
Theatre Program Director	Danette Baker
Design & Technical Theatre Program Director/Associate Professor of Theatre	Sarah Bussard
Musical Theatre Program Director/ Professor of Musical Theatre	Amy Baker Schwiethale
Dance Program Director	Sabrina Vasquez
Coordinator of Filmmaking & Professor of Theatre	Dr. Bret Jones
Professor of Theatre, Voice & Diction	Dr. Judith Babnich
Professor of Dance, Ballet	Denise Celestin
Associate Professor of Scenic & Lighting Design	David Neville
Professor of Theatre/Technical Director	Ed Baker
Instructor of Theatre, Playwriting	Jeannine Russell
Assistant Professor of Musical Theatre	Richard Bieber
Professor of Dance	Nick Johnson
Costume Shop Manager	Melissa Penkava Koza
Scene Shop Manager	Jason Flanders
Administrative Specialist	Stacy Salters

CREW WHO'S WHO



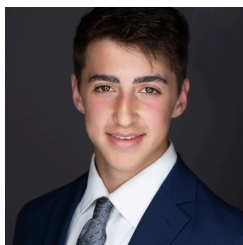
Jade Almsberger

Jade Almsberger (Costume Designer) is excited to be working on Wichita State University Theatre's production of *Stupid F##king Bird*. Previous credits include Wardrobe Apprentice (*Glimmerglass Festival*, Summer 2022), Costume Designer for WCDT Concert's *Ever There* (WSU), and Assistant Stage Manager for *Bright Star* (Olathe Civic Theatre Association). Jade is a junior pursuing a BFA in Performing Arts-Design & Technical Theatre. Her mission statement is to continuously push herself farther than she ever imagined! You can find out more about her at www.jadealmsberger.weebly.com



Crosby Dold

Crosby Dold (Emma) is delighted to be working on this production of *Stupid F##king Bird*. Previously Crosby has been in *The Fox Sisters* (WSU), *Voices in the Void* (WSU), and *Midsummer Night's Dream* (Wichita Community Theatre). They are a senior pursuing a BFA Performing Arts-Theatre Performance with a minor in Music and receiving a certificate in Voice Acting. Crosby strives to bring a unique perspective to theatre through their voice and identity as an openly genderfluid person.



James Earlywine

James Earlywine (Dev) is exhilarated in making his Wichita State Theatre debut this year as Dev in *Stupid F##king Bird*. Previously, James appeared onstage at the International Thespian Festival in *Bus Stop* (Paola High School), *110 Stories* (Paola High School), and *Scapino!* (Paola High School). In his freshman year of college at WSU, James is pursuing a BFA in Performing Arts-Theatre Performance and a minor in Music Performance.

CREW WHO'S WHO



Carson Ediger

Carson Ediger (Publicity) is thrilled to be working on Wichita State University Theatre's production of *Stupid F##king Bird*. Previous design credits include ASM/Publicity for *Go Like Saints* (WSU). Previous acting credits include: *Popcorn Movie* (WSU), *Voices in the Void* (WSU), and *Clear Water* (Independent Short Film). Carson is a junior pursuing a BFA in Performing Arts-Theatre Performance. Carson's mission as an artist is "to bring the world together through laughter and entertainment."



Tamara Gagne

Tamara Gagne (Assistant Scenic Designer) is in her third semester here at WSU. She is working on her BFA in Performing Arts-Design & Technical Theatre so she can become a movie and tv set designer. She graduated from WSU Tech in Spring 2021 with an Associate's degree in Interior Design and she is certified in kitchen and bath design. Previous credits include lightboard operator in *Keeper of the Flame*, Assistant Costume Designer in the Dance Concert, and Scenic Designer in *Go Like Saints*. Tamara is looking forward to working on other plays and expanding her knowledge in this field.



Blake Grimsley

Blake Grimsley (Stage Manager) is thrilled to be working on Wichita State University's theatre production of *Stupid F##king Bird*. Blake is a member of the Stage Managers Association and previously at WSU, Blake was the Production Stage Manager for WCDT Dance Concert. Outside of the university, Blake worked at Pennsylvania Shakespeare Festival as Scenic Carpenter and Rigger, & was the Lead Spotlight operator/Coordinator for *A Chorus Line*. To read more about Blake go to blakegrimsley.com

CREW WHO'S WHO



Matthew Gwinner

Matthew Gwinner (Dr. Eugene Sorn) is honored to be joining the WSU theatre program this year as a transfer student from Tulsa, Oklahoma. Some shows that he has done in the past include *Puffs* (TCC), *On the Verge* (TCC), and *Little Shop of Horrors* (Edison High School). Matthew is a Junior pursuing a BFA in Performing Arts-Theatre Performance. Matthew's mission right now is to hone his skills in acting and learn how to create new, exciting, and honest characters on stage.



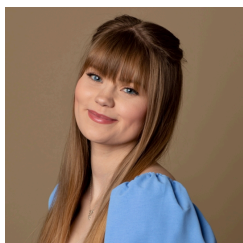
Morgan Holcomb

Morgan Holcomb (Emma, understudy) is thrilled to be in another Wichita State University production! Previous credits include *Love's Labor's Lost* (WSU) and *Go Like Saints* (WSU). Morgan is a sophomore Theatre Performance major. Morgan's mission is to show the art of theatre to everyone she can. You can find out more about Morgan on Instagram @mholcomb20.



Jessica Hudson

Jessica Hudson (Makeup Designer) is ecstatic to be working on Wichita State University's theatre production of *Stupid F#cking Bird*. Previously she was a part of the makeup run crew for *The Scarlet Letter* (WSU Opera), portrayed Costard in *Love's Labor's Lost* (WSU), and student directed *A Chorus Line* (Grapevine High School). Jessica is a sophomore pursuing a BA in Performing Arts-Theatre with a minor in Signed Languages and a certificate in Directing. Jessica's mission is to become a theatre teacher one day and share her love of theatre with her students.



Ella Kempker

Ella Kempker (Nina) is holly-cowsiedotes about performing in another WSU show! Previously she can be seen in the original production of *Go Like Saints* (WSU) and film *Better To Have Loved* which was recently shown at Tallgrass Film Festival. Ella's goal in everything she does is to make people connect on many different levels and spark that inner sense of creativity and imagination both in herself and her audience. See more of Ella at <https://ellgray2216.myportfolio.com/on-stage>

CREW WHO'S WHO



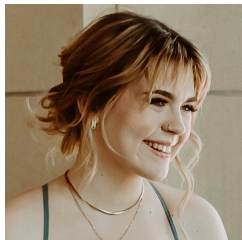
Hayley Longacre

Hayley Longacre (Mash) is excited to perform in her second show at Wichita State University. She is a transfer student from Tulsa Community College (TCC) and is a junior. Previous credits include *The Fox Sisters* (WSU), *Miss Alma's Rules* (TCC), and *Puffs* (TCC). She is pursuing a BFArts in Performing Arts-Theatre Performance with a minor in Musical Theatre. Hayley's mission as an artist is to give meaningful performances to as many as she can.



Ian Moore

Ian Moore (understudy) is excited for his Wichita State University Theatre debut & to be working on WSU's production of *Stupid F##king Bird*. Previous credits include *Miss Alma's Rules* (Tulsa Community College), *A Midsummer Night's Dream* (Clark Youth Theatre, Tulsa, OK), and *Romeo & Juliet & Zombies* (Clark Youth Theatre, Tulsa, OK). Ian is a third-year student pursuing a BA in Performing Arts-Theatre.



Alexys Porter

Alexys Porter (Production Stage Manager) is delighted to be working on another production at Wichita State University. She is in her final year at WSU and will graduate with a BA in Theatre and a certificate in Stage Management. Alexys has previously worked as a stage manager for *Calendar Girls* (The Crown) and *Keepers of the Flame* (WSU). She has also worked as a technical director, assistant stage manager, and sound designer for WSU and interned for stage management with the Seven Devils Play Foundry.

CREW WHO'S WHO



Emily Redfield

Emily Redfield (Assistant Director) is thrilled to be working on this production as Assistant Director! Previous credits include Music Theatre Wichita's 2022 season as a Hair and Makeup Assistant and stage managing *Comedy of Errors* (Wichita Shakespeare Company). Emily is a junior pursuing a BFA in Performing Arts-Theatre Performance along with a certificate in Directing. Emily's mission is to inspire future generations of artists.



Zachary Richardson

Zachary Richardson (Con) is happy to be performing in *Stupid F##king Bird* with Wichita State University! As a senior going for a BFA in Performing Arts-Theatre Performance and a Voice Acting certificate, he has had a great deal of fun preparing for this role! He wants to thank you for coming and he hopes you enjoy this show!



August Smaglik

August Smaglik (Properties Manager) is honored to be working on Wichita State University theatre's production of *Stupid F##king Bird*. Previously they served as a props artisan for the Music Theatre Wichita 2022 Season. They also costume designed *Happy Wright* (Wichita State University), and was props manager for *Love's Labor's Lost* (WSU). August is a Junior pursuing a BFA in Performing Arts-Design & Technical Theatre. Their mission is to pursue a career in props artistry.



Jo Smith

Jo Smith (Doyle Trigorin) is ecstatic to make his Wichita State University Theatre debut. Prior to this performance he has performed in the following: *Love/Sick* (Tulsa Community College), and *The Gospel According to Scrooge* (Cornerstone Christian Fellowship). Jo is in his third year at WSU to complete his BFA in Performing Arts-Theatre Performance and minor in Musical Theatre. Jo's aspiration as an artist is "to continue to grow the positive outlook of mental health in society."

ACKNOWLEDGEMENTS

SPECIAL THANKS

Michael Cole	Jacob Locke	College of Fine Arts Dean's Office
Porter Jones	Katelyn Koch	Performance Facilities
Mark Rose	David Muehl	Student Government Association
Amy Baker Schwiethale	Jon Commons	Performing Arts Angels
Julian Archuleta	Tiffany Nguyen	School of Performing Arts Faculty & Staff
Emilie Keane		Wichita Performing Arts Community



ACKNOWLEDGEMENTS

IN LOVING MEMORY OF

Danette Baker (1963-2022)

The passing of a loved one is always profoundly difficult and painfully confusing for family and friends. When the person is a fierce leader, community builder and paradigm shifter, passionate colleague, renowned artist, and a most impactful educator and student advocate, the reach is beyond measure. Danette Baker leaves a life and legacy we can all aspire to. She inspired and challenged us all to bring our full selves and unapologetic views and knowledge to every second of every minute of every day.

Danette (MFA) was program director of theatre in the School of Performing Arts. She was a frequent director and member of the acting company for Seven Devils Playwrights Conference in McCall, Idaho, a national conference focusing on new play development. She was a Society of American Fight Directors Certified Teacher, and founder of the Wichita Unrehearsed Shakespeare Society, a company dedicated to presenting the works of Shakespeare according to the First Folio technique. She acted in theatres across the country, appearing with the Aegean Theatre Company, American Globe Theatre, and the Director's Company in NY, Monomoy Theatre on Cape Cod, Cleveland Playhouse in OH. In Wichita, she appeared with Cabaret Oldtown, Chamber Music in the Barn, Prairie Pines Festivals, Wichita Center for the Arts, Guild Hall Players, Signature Theatre, Wichita Shakespeare Company and Wichita Community Theatre. She presented workshops in acting and stage combat at area high schools, colleges, state high school festivals and the Kennedy Center/American College Theatre Festival for Region V. She was an 8-time recipient of the Mary Jane Teall Theatre award for Outstanding Acting, a recipient of the 2012 Ruth McCormick Outstanding Theatre Educator Award, twice recognized as the Outstanding Female Performer in the Society of American Fight Directors Advanced Actor Combatant Workshop, and received Certificates of Commendation from the Kennedy Center American College Theatre Festival Region V for her direction of *A Hedda Gabler* and her fight choreography for *Twelfth Night*.



(obituary at <https://www.legacy.com/us/obituaries/kansas/name/danette-baker-obituary?id=37646104>)

SCHOLARSHIPS & DONORS

2022-23 Scholarships

JAMES & CATHERINE BUCK FINE ARTS SCHOLARSHIP

Thomas Yambo-Rios
David Kellam
Dylan Lindsey
Rae Oquendo

PERFORMING ARTS ANGELS

Andrae Carter
Caitlin Sanders
Mark Barlow

JULIAENNE W. MASTERS THEATRE SCHOLARSHIP

Adia Tolbert

MILLER TRUST FINE ARTS SCHOLARSHIP

Bailey Buchanan
Hannah Chandler
Alexandria Nickel
Lille Nightingale
Piper Patterson
Liberty (Warner) Joy
Kaete Mokrynski

JOYCE CAVAROZZI THEATRE SCHOLARSHIP

Alexandra Simpson

STEV OVERSTREET DEAN'S FUND FOR FINE ARTS

Benjamin Schwartz
Mckenna Lewis
Caitlin Wolff
Christian Watkins

ELEANOR DOTY CLAIR SCHOLARSHIP

Austin Hancock

KIM STEPHENS EXCELLENCE IN DANCE

Hannah Chandler

AUDREY NEEDLES SCHOLARSHIP FUND

Ella Kempker

JON & K CALLEN MUSIC THEATRE SCHOLARSHIP

Jaden Kindle

JUNE M. LAIR ENDOWMENT FOR THE ARTS SCHOLARSHIP

August Smaglik

BRET NEFF MEMORIAL SCHOLARSHIP

Alexandra Simpson

MILLER TRUST DRAMA SCHOLARSHIP

Drew Thomas
Christina Noble-Speedie
Caitlin Sanders
Benjamin Schwartz
Gavin Tanner
Elaine Watson
Jade Almsberger
Crosby Dold
Gabrielle Johnson
Ella Kemkper
Emily Redfield
August Smaglik

DOLORES AND CHARLES CRUM MAINSTAGE THEATRE SCHOLARSHIP

Dyan Bray
Ashley Grega
Matthew Gwinner
Austin Hancock
Morgan Holcomb
Porter Jones
Bethany Khanu
Lillian Porcaro
Renaee Richmond
Adia Tolbert
Denise Ussery

ARMSTRONG PERFORMING ARTS SCHOLARSHIP

Jonathan Banks
Denver Fankhouser

MARTHA M. FLEMING DANCE SCHOLARSHIP

Lillie Nightingale

HICKMAN SCHOLARSHIP IN MUSICAL THEATRE

Ashley Strella

JANICE CHAMBERS RAMSEY SCHOLARSHIP IN MUSICAL THEATRE

Timothy Hampton
Sophia Hillman
Jaden Kindle
Thomas Yambo-Rios

RICHARD C. WELSBACHER THEATRE SCHOLARSHIP

Renaee Richmond

TURTLE SCHOLARSHIP FOR DANCE

Bailey Buchanan

RANDAL M. JONES SCHOLARSHIP

Hagan Simmons

GEORGE D. WILNER ACHIEVEMENT AWARD

Gabrielle Johnson

LULU BONAVIA DANCE SCHOLARSHIP

Cobie Reeves
Liberty (Warner) Joy

MUSIC THEATRE SCHOLARSHIP

Sophia Hillman
Claire Kennard
Mckenna Lewis
Frances Robu
Wyman Wheeler

MARJORIE LOIS GRAHAM SCHOLARSHIP

McKenna Lewis
Madelyn Marshall
Gavin Tanner
Gabrielle Johnson
Hagan Simmons

PAMELA J. POSTIER SCHOLARSHIP

Mckenna Lewis

ALFRED S. & ESTHER U. PERRY ENDOWED MEMORIAL SCHOLARSHIP

Frances Robu
Benjamin Schwartz
Alexandra Simpson
Madelyn Marshall
Drew Thomas

LINDA STARKEY MUSICAL THEATRE SCHOLARSHIP

Christian Albin
Dalton Devoe
Sophia Hillman
Sophia Pickett

SCHAEFER, JOHNSON, COX, FREY, & ASSOCIATES

SCHOLARSHIP

Dalton Devoe
Sophia Hillman

SCHOLARSHIPS & DONORS

PERFORMING ARTS ANGELS

The Performing Arts Angels exist to provide educational and training opportunities for talented dance, musical theatre, and theatre (performance and design/tech) students in the School of Performing Arts - opportunities not funded through the state or university.

The School of Performing Arts faculty, staff, and students recognize and deeply appreciate all their financial support. The support allows the school to fulfill our mission to educate and train students for a career in the arts and entertainment industry. To find out how you can become a Performing Arts Angel and support the School of Performing Arts students, please contact our office at 316-978-3945 or give online at www.wichita.edu/give.

We apologize in advance for any omission or errors in this list. Please bring corrections to the attention of Ann Marie Siegarth at annmarie.siegarth@wichita.edu or 316-978-3945.

Giving for September 2021 - October 2022

**Deceased*

PRODUCER (\$1,000 +)

Marty & Donna Perline
Pam Postier
Michael Bayouath
Stev Overstreet
Sally Ottaway
Gary Wood
Ed & Danette Baker
Anita Jones
Christine Kubik
Daniel & Martha Housholder
Julie & Stan Longhofer
Keith & Georgia Stevens
William McKay* & Margaret Fulton-McKay
Richard & Cynthia Carl
Dottie Shannon
Marlene Hayes
Emily Bonavia
Paul & Michelle Witte
Richard & Debra Campbell
Denny & Sherry Grady
Ltc.(R) Lionel & Tammy Alford

DIRECTOR (\$500 - \$999)

Wes Henderson
Raymond & Diane Gans
Harriet Hickman
Don & Elizabeth King
Shoko Severt
Rodney Miller & Pina Mozzani
Angela Johnsen & Leon Barnes
John Fishpaw & Kimberly Krohn

CHOREOGRAPHER (\$200 - \$499)

Delmar & Mary Klocke
Alan & Sharon Fearey
Dee & Linda Starkey
Hew & Judy Goodpasture
Pete & Renea Goforth
Wayne Bryan
Walter & Kaye Myers
John & Mary Shellito
Wendy Hanes
Pam Bjork

CHOREOGRAPHER CONT. (\$200 - \$499)

Richard Muma & Rick Case
Nancy Anderson
Nancy Stone
Michael Klaassen & Gerri Colgan
Kathleen Moore
Wells Fargo Advisors Fin Network LLC

DESIGNER (\$100 - \$199)

Eric Engstrom
Stephen Sowards & Jane Wilcox
Harold & Evelyn Gregg
Anne Welsbacher
Ward & Nancy Jewell
Johanne Panchankis
John & Cindy Carnahan
Lou & Mallory Medvene
Steven & Kitchel Woods
James & Lisa Vayda
Ann Marie Siegarth
Nancy Wood
Nathan Miller
Joanna Castillo
Sarah Wallace

PERFORMER (\$25 - \$99)

Dean Cleverdon & Nancy Nyberg
Jay Pfeiffer & Kimberly Engber
Dean Corrin & Judy Dorrell
Teresa Veazey
John Goering & Krysti Carlson-Goering
David Johnsen
Alexandra Levine
Maguns & Marena Assarsson
Aaron & Rebekah Winter
Nadia Khalidi
Lacy Draznik
Jeremiah Johnsen
MaryAlice Johnsen
David Johnsen, Sr
Liz Massey
Jamie Shelton

SCHOLARSHIPS & DONORS



WICHITA STATE
UNIVERSITY

COLLEGE OF FINE ARTS

School of Performing Arts



@wchitastateperformingarts



@wchitastateperformingarts



@WSU_SPA



wichita.edu/performingarts

BECOME A PERFORMING ARTS ANGEL!

Visit wichita.edu/give to become a member online with credit card,
or complete this form, enclose a check (payable to the WSU Foundation/
Performing Arts Angels) and
send by mail to 1845 Fairmount, Campus box 2 Wichita, KS 67260.

- | | |
|--|------------|
| <input type="checkbox"/> PRODUCER | \$ 1,000 + |
| <input type="checkbox"/> DIRECTOR | \$ 500-999 |
| <input type="checkbox"/> CHOREOGRAPHER | \$ 200-499 |
| <input type="checkbox"/> DESIGNER | \$ 100-199 |
| <input type="checkbox"/> PERFORMER | \$ 25-99 |

Name _____

Address _____

City _____

State _____ Zip _____

Phone _____