

PLAYBILL®

Wichita State University School of Performing Arts
Wichita, KS

march 25-28, 2021

[title of show]

book by Hunter Bell

music & lyrics by Jeff Bowen

**Wichita State University
School of Performing Arts**

PRESENTS

[title of show]

Music and Lyrics by

Jeff Bowen

Book by

Hunter Bell

with

**Natalie Carrera
Ethan Crank
William Day**

**Nora Dooley
Jackson Dorris**

**Ariel Glorksy
Lucas Lowry
Grace Roush**

Scenic Design
David Neville

Music Director
Phil Taylor

Costume and Makeup
Design
Katie Goetz

Lighting Design
Kaley Russell

Stage Manager
**Taylor Poling & Emily
Matchell**

Sound Design
Ciaran Schaedtler

Production Manager
Amy Chisman

Directed by
Trevor Seyl

[title of show] was originally produced on Broadway by
Kevin McCollum, Jeffrey Seller, Roy Miller,

Laura Camien, Kris Stewart, Vineyard Theatre and LAMS

Productions at the Lyceum Theatre, where it opened on July 17, 2008.

Originally produced by the Vineyard Theatre, New York City, February 2006.

[title of show] was originally presented by Bridge Club Production at the 2004 New York Musical Theatre Festival

[title of show] is presented through special arrangement with R & H Theatricals: rnh.com.

SONGS

Musical Synopsis

Untitled Opening Number Company

Scene 1: Phone Call 1

Two Nobodies In New York Jeff and Hunter

Scene 2: Meet and Greet

An Original Musical Jeff and Blank Paper

Scene 3: Get to Work

Monkeys and Playbills Company

Scene 4: Post Monkeys

The Tony Award Song Jeff and Hunter

Scene 5: Pre "Part Of It All"

Part Of It All Jeff

Scene 6: Bench Scene

What Kind of Girl Is She? Heidi and Others

Scene 7: Dream Sequence

Die Vampire, Die! Susan and Others

Scene 8: Filling Out the Form

Filling Out The Form Company

Scene 9: Mail It! Mail It!

Montage Part I: September Song Company

Montage Part II: Secondary
Characters Heidi and Susan

Montage Part III: Development
Medley Company

Scene 10: What Now?

Scene 11: Meet And Greet 2

Change It / Don't Change It Company

Awkward Photo Shoot Company

Scene 12: Final Phone Call

A Way Back To Then Heidi

Scene 13: Pre-9

Nine People's Favorite Thing Company

Finale Company

CAST

Thursday/Saturday

Jeff Ethan Crank
Hunter Jackson Dorris
Susan Ariel Glorsky
Heidi Nora Dooley
Larry Phil Taylor

Friday/Sunday

Jeff William Day
Hunter Lucas Lowry
Susan Grace Roush
Heidi Natalie Carrera
Larry Phil Taylor

Understudies

Jeff/Hunter Gavin Tanner
Heidi/Susan Ashley Stella

CREW

Crew Members

Producer	Linda Starkey
Director	Trevor Seyl
Director Mentor	Amy Baker Schwiethale
Music Director/Pianist/Larry	Phil Taylor
Production Manager	Amy Chisman
Assistant Production Manager	Melissa Penkava Koza
Technical Director	Ed Baker
Stage Manager	Taylor Poling
Stage Manager	Emily Matchell
Scenic Designer	David Neville
Costume/Makeup Designer	Katie Goetz
Costume Design Mentor	Sarah Bussard
Lighting Designer	Kaley Russell
Lighting Design Mentor	David Neville
Master Electrician	Katelyn Koch
Sound Designer	Ciaran Schaedtler
Sound Design Mentor	David Muehl
Prop Master	Sydney Alder
Props Shop Supervisor	Wesley Sweigart
Scene Shop Manager	Jason Flanders
Scene Shop Crew	Trevor Seyl, Ali Miró, Alex Simpson
Costume Shop Manager	Melissa Penkava Koza
Lead Costume Shop Assistant	Erin Mittman
Costume Shop Assistants	Emily Evans, Ariel Glorsky, Katie Goetz, Jacob Kramer, Katy Reko
Wardrobe Supervisors	Jacob Kramer, Adia Tolbert
Hair/Makeup Supervisors	Abbey Evans, Megan Secrest
A2	Andrew Bowden
A2	Teagan Myers
Follow Spot	Cadence Leboeuf
Follow Spot	Sang Le

CREW

Crew Members (continued)

Director of Photography David Neville

Poster Designer Nora Dooley

Playbill Designer Courtney Wages

WHO'S WHO



Natalie Carrera

Natalie Carrera (Heidi) is excited to be performing on the Wilner Auditorium stage one last time! Natalie is a senior pursuing a Bachelor in Fine Arts in musical theatre with minors in dance and communications. Previously, Natalie appeared in *Anything Goes* (WSU), *Theory of Relativity* (WSU), and several dance productions including *The Visitors* (Kansas Dance Festival) and *She Moved the Prairie*. Natalie is a proud member of Alpha Phi at Wichita State. Natalie would like to thank her family and friends for their support, and the School of Performing Arts faculty for the training and opportunities she has received over the past four years.



Ethan Crank

Ethan Crank (Jeff) is making his second appearance at Wichita State University. Previous credits include *Anything Goes* (Wichita State), *Godspell* (KBT Studio), and *Girl in Blue* (Scottish Rite). Ethan is a junior pursuing a Bachelor in Fine Arts in musical theatre. Ethan's mission is "to understand how imagination differs from person to person."



William Day

William Day (Jeff) is incredibly happy to be performing in his third musical at Wichita State University. Previous credits include *Theory of Relativity* (Wichita State) and *Anything Goes* (Wichita State). William is a junior pursuing a Bachelor of Fine Arts in Music Theatre, as well as a certificate in filmmaking, and is a member of the Empty Space Theatre Organization as the head of marketing and publicity. William's mission is to make art more accessible for the people and spaces that need it the most.

WHO'S WHO



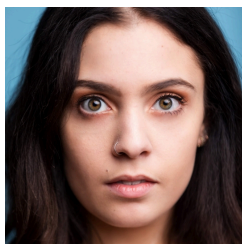
Nora Dooley

Nora Dooley (Heidi, publicity) is immensely honored to be returning to the Wichita State University stage. Previous credits include *Theory of Relativity* (Wichita State University), *Thrilled to Announce* (Wichita State University), and *Don't Date Your Sister* (And Why Films, LLC). Nora is pursuing a Bachelor of Fine Arts in Performing Arts/Musical Theatre with minors in marketing and graphic design. She is a member of the Honors College and a Student Laborer with the WSU Navigators. As an artist and human being, Nora strives always to find beauty amidst the broken and abide in love (John 15:9-11).



Jackson Dorris

Jackson Dorris (Hunter) is a senior pursuing a Bachelor in Fine Arts in Performing Arts with an emphasis in musical theater. Jackson is so excited to finally be back on the stage for another production! He has recently been seen in Wichita State's productions of *Anything Goes* (Captain), *Seussical* (Mayor), and *I Love You Because* (Austin). Jackson would like to thank his family for the constant love and support they give him, and God who gives him strength through all that he does.



Ariel Glorsky

Ariel Glorsky (Susan) is a senior pursuing a Bachelor of Fine Arts with an emphasis in musical theatre and a minor in dance. Her recent performance credits include *Anything Goes*, *Theory of Relativity*, and *Seussical the Musical* (Wichita State University). When she's not onstage, Ariel is involved with the Wichita State University Costume Shop, serves as the Literary Director for Empty Space Theatre, and is an avid freelance dance teacher and choreographer. After graduation, Ariel plans to move to New York City and begin auditioning and making connections. While her time at WSU taught her many important lessons, her greatest takeaway is her ability to effectively pursue her passion and take on the industry with confidence.

WHO'S WHO



Lucas Lowry

Lucas Lowry (Hunter) is thrilled to be returning to another stellar production at Wichita State University. Previous credits include *The Wiz* (Roxy's Downtown), *In The Heights* (Music TheaterHeritage), and Disney's *Newsies* (The Coterie). Lucas is a senior pursuing a double major in vocal music education and musical theatre and plans to begin his student teaching in the Fall. He'd like to thank his parents, brother, coaches, sponsors, and above all else, God, for the gracious love and support throughout his career. {Corinthians 13:4-8}



Emily Matchell

Emily Matchell (Stage Manager) is super excited to be working on Wichita State University's production of *[title of show]*. Previously she was the Stage Manager for *the Complete Works of Shakespeare Abridged* (Wichita State University) and *Love Me or Leave Me* (Wichita State University). She also served as the Charge Artist for *Anything Goes* (Wichita State University). Emily is a junior pursuing a bachelors in Theatre. Emily's mission is to help her fellow artists come together to create an awe-inspiring piece of art.



Taylor Poling

Taylor Poling (Stage Manager) is so excited to be a part of *[title of show]* at Wichita State University. Past credits include productions at Lyric Theatre in OKC, Crown Uptown, Roxy's Downtown, and right here at WSU. After college, Taylor plans to continue pursuing stage management. "Fight for the things that you care about, but do it in a way that will lead others to join you." - Ruth Bader Ginsburg



Grace Roush

Grace Roush (Susan) is a senior transfer student pursuing a Bachelor of Fine Arts in Musical Theatre at Wichita State University. She previously appeared in the Wichita premiere of “American in Beirut” written by Alex Wakim and Chantal Bilodeau. She was also seen as Jenny in *Theory of Relativity* (Wichita State University,) a Player in *Pippin*, (Missouri Southern State University) and in the ensemble as well as the swing for the female leads in *Heathers* (Joplin Little Theatre.) Grace’s mission as an artist is summed up in a Cesar Cruz quote, “Art should comfort the disturbed and disturb the comfortable.”



Kaley Russell

Kaley Russell (Lighting Designer) is thrilled to be working on Wichita State University’s production of *[title of show]*. Previous credits include Sound Designer for *Love Me or Leave me* (Wichita State University), Lightboard Technician for *The Humans* (Wichita Guild Hall), and run crew for *Pippin* (Music Theatre Wichita). Kaley is a senior pursuing a Bachelor of Arts in Performance with an emphasis in design & technical theatre & a concentration in lighting design.



Amy Baker Schwiethale

Amy Baker Schwiethale (Faculty Mentor) Professor & Program Director of Musical Theatre. She has been honored by the National Kennedy Center American College Theater Festival in Washington D.C. for her direction and choreography of *Smokey Joe’s Café*. Other choreography credits include *Disney’s My Son Pinocchio*, *Honk!*, *Gypsy*, and *Camelot* at MTWichita and *New York Jazz Chorography Project* (Alvin Ailey Studios), *Traditions in Tap* (guest choreographer/performer) in New York City. Amy’s performance credits include: Phyllis Dale in *42nd Street* (First National Broadway Tour), *Radio City Christmas Spectacular*, *Westchester Broadway Theatre’s Singin’ in the Rain*, five seasons with the Music Theatre Wichita resident company and Anytime Annie in *42nd Street*. Special thanks to Director, Trevor Seyl, and all our student designers and technicians on this project!

WHO'S WHO



Ashley Strella

Ashley Strella (Understudy Heidi/Susan) is absolutely thrilled to be making her Wichita State University theatre debut! Previous credits include *Grease* (StageRight Performing Arts), *Hands on a Hardbody* (Olathe North High School), and *Disney's The Little Mermaid* (Olathe North High School). Ashley is a sophomore pursuing a Bachelor of Fine Arts in musical theatre with minors in exercise science and dance. She serves as the Performing Arts Involvement Chair for the School of Performing Arts Student Council (SPACO) and as Choreographer for Shockappella. You can learn more about her by following her [@ashleystrella](#).



Gavin Tanner

Gavin Tanner (Understudy Hunter/Jeff) is making their theater debut at Wichita State University. Previously they have appeared in *Into the Woods* (Shawnee Mission West), *Legally Blonde* (Shawnee Mission West), and *Seussical the Musical* (Christian Youth Theater). Gavin is a freshman pursuing a Bachelor in Fine Arts in Performing Arts with an emphasis in musical theater. Gavin's mission statement is "to inspire passion, meaning, and hope".

END NOTES



A note from the director...

Who says four chairs and a keyboard can't make a Broadway musical? That is the question we explored when we set out to do this show. We experimented with whether or not people talking, listening, and playing themselves was enough to make a night of musical theatre. *[title of show]* is simply about two guys writing a musical about two guys writing a musical. We follow the creative journey of four artists as they navigate the birth, life, insecurities, and final release of the project that shaped their creative skills.

In addition to encouraging the actors to play themselves, we had the opportunity to double cast this production. This allowed the actors to play off each other and experience the other cast's show to continuously explore their own performance. Which helped with the individuality aspect that we saw so prevalent in the script. Encouraging the actors to play their true, authentic selves only makes the show more interesting and powerful. We hope you stay for the next night to see both cast and how their difference only makes the piece more beautiful!

Through the masterful book, score, and lyrics by Jeff Bowen and Hunter Bell we are able to step into the minds of contemporary creatives through minimalistic dialogue and heightened "meta" moments. We never wanted to overcomplicate the story of the conception of a creative project and the birth of a family of friends with unnecessary theatrics or enormous sets. So, we kept things simple. We hope this production allows you to break down your own insecurities and try to overcome any fears you have about doing something creative or pursuing an opportunity.

Trevor Seyl (Director) is humbled to be making his mainstage directing debut with Wichita State University's production of *[title of show]*. Trevor's previous credits include Producer/Artistic Director of *Watch the Birdie* (World Premiere) (Scope Theatre Company), Director of Senior Showcase (Wichita State University), and Stage Manager of *Nap the Tour* (Cloud9 Productions). Trevor is a senior pursuing a Bachelor in Fine Arts in musical theatre. Trevor is the Artistic Director of the Empty Space Theatre at Wichita State University.

Special Thanks

Media Resource Center

Performance Facilities

Performing Arts Angels

Dean Rodney Miller and the Dean's Office

School of Performing Arts Faculty and Staff

Linda Starkey, Director of the School of Performing Arts

Student Government Association



WICHITA STATE
UNIVERSITY

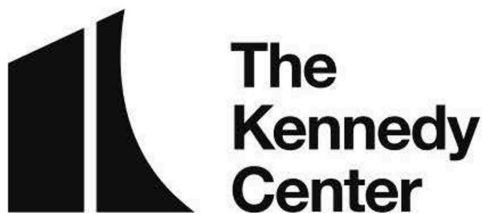
COLLEGE OF FINE ARTS

School of Performing Arts



WICHITA STATE
UNIVERSITY

STUDENT GOVERNMENT
ASSOCIATION



*The Kennedy Center American College Theater Festival, part of the Rubenstein Arts Access Program, is generously funded by **David M. Rubenstein.***

Special thanks to The Harold and Mimi Steinberg Charitable Trust for supporting the John F. Kennedy Center for the Performing Arts' Kennedy Center American College Theater Festival.

Additional support is provided by The Honorable Stuart Bernstein and Wilma E. Bernstein; and the Dr. Gerald and Paula McNichols Foundation.

Kennedy Center education and related artistic programming is made possible through the generosity of the National Committee for the Performing Arts.

This production is entered in the Kennedy Center American College Theater Festival (KCACTF). The aims of this national theater education program are to identify and promote quality in college-level theater production. To this end, each production entered is eligible for a response by a regional KCACTF representative, and selected students and faculty are invited to participate in KCACTF programs involving scholarships, internships, grants and awards for actors, directors, dramaturgs, playwrights, designers, stage managers and critics at both the regional and national levels.

Productions entered on the Participating level are eligible for invitation to the KCACTF regional festival and may also be considered for national awards recognizing outstanding achievement in production, design, direction and performance.

Last year more than 1,500 productions were entered in the KCACTF involving more than 200,000 students nationwide. By entering this production, our theater department is sharing in the KCACTF goals to recognize, reward, and celebrate the exemplary work produced in college and university theaters across the nation.

Check Out These Current Productions

The Monty Hall Problem

Where does the smartest woman in the world go for advice? That very question is examined in this fictional reflection of Marilyn vos Savant. In 1993, wrestling with the backlash from a widely read and controversial magazine column she's written, Marilyn visits her therapist. A logic puzzle that ought to be purely imaginary takes menacing shape when a saccharine game show host interrupts the session. Marilyn, her therapist and Daytime Emmy-Award winner Monty Hall match wits in a reflection on doors, goats, and what it means to be right.

Gumshoes (Listen to episodes 1-3)

An inept, but conniving detective opens his agency only to have it hijacked by an unexpected partner in the business.

- In episode #1, an unlikely pair of private investigators team up to help a lady in distress...
- In episode #2, Monte and Jody are hired to find a missing college student who has suddenly become flush with cash...
- In episode #3, An old flame of Jody's arrives on the scene to ask for a favor and stir things up a bit...

Coming Up Next!

Spring Dance Concert (April 9-10)

Wichita Contemporary Dance Theatre will present an evening of works by faculty & guest artist, Hui Cha Poos.

Rule of Three (Streaming April 23-24)

Douglas, a talented English major, is haunted by three ghosts when his girlfriend, fellow student, and professor all die on the same day at the same time. Rule of Three is a 4 episode comedy-drama series about Douglas trying to live his life with three spirits now a part of it.

Go to www.wichita.edu/spa/currentseason for more information!

SCHOLARSHIP RECIPIENTS & ANGELS

JAMES & CATHERINE BUCK FINE ARTS SCHOLARSHIP

Victoria Boyd
Nasir Burton
Jackson Dorris
Caleb Freeman
Mary-Michael Gomez
Alison Huddleston
Dylan Lindsey
Victoria Oquendo
Taylor Poling
Megan Reinhart
Vivian Young

PERFORMING ARTS ANGELS

Bailey Buchanan
Londen Peebler
Renaë Richmond
Julia Smaglik

JULIAENNE W. MASTERS THEATRE SCHOLARSHIP

Wesley Sweigart

JON & KELLY CALLEN MUSIC THEATRE SCHOLARSHIP

Natalie Carrera

VERYLE HERIFORD FINE ARTS SCHOLARSHIP

Claire Kennard

MILLER TRUST FINE ARTS SCHOLARSHIP

Sara Boehm
Emily Blaine
Alexandra Nickel
Piper Patterson
Rhiannon Vieyra
Liberty Warner

JOYCE CAVAROZZI THEATRE SCHOLARSHIP

Alexandria Simpson

STEV OVERSTREET DEAN'S FUND FOR FINE ARTS

Kalene Blanton
Caroline Boesen

MILLER TRUST DRAMA SCHOLARSHIP

Sydney Alder
Andrew Bowden
Marcella Cosby
Crosby Dold
Eleanor Dooley
Ariel Glorsky
Ethan Harmon
Porter Jones
Ella Kempker
Claire Kennard
Emily Redfield
Zachary Richardson
Emerson Ross
Kaley Russell
Mirta Santana
Ciaran Schaedtler
Trevor Seyl
Hagan Simmons
Alexandra Simpson
Drew Thomas
Courtney Wages

ALFRED & ESTHER PERRY SCHOLARSHIP

Natalie Carrera
Hannah Chandler
Jacob Kramer
Zachary Richardson
Ashley Strella
Wesley Sweigart

ELEANOR DOTY CLAIR SCHOLARSHIP

Ciaran Schaedtler

KIM STEPHENS EXCELLENCE IN DANCE

Hannah Chandler

AUDREY NEEDLES SCHOLARSHIP FUND

Ciaran Schaedtler

ARMSTRONG PERFORMING ARTS SCHOLARSHIP

Denver Fankhouser
Megan Secrest

BRET NEFF MEMORIAL SCHOLARSHIP

Mirta Santana
Ciaran Schaedtler

RANDAL M. JONES SCHOLARSHIP

Piper Patterson

MARY JANE TEALL THEATRE SCHOLARSHIP

Mirta Santana
Alexandra Simpson
Wesley Sweigart
Ciaran Schaedtler

GEORGE WILNER ACHIEVEMENT AWARD

Mirta Santana

LULU BONAVIA

Camille Knoepffler Calvo
Timothy Portwood

MUSIC THEATRE SCHOLARSHIP

Eleanor Dooley
Philip Hanson

MARJORIE LOIS GRAHAM SCHOLARSHIP

Natalie Carrera
Anna-Sophia Reyes

PAMELA POSTIER SCHOLARSHIP

Ashley Strella

RAMSEY MUSICAL THEATRE SCHOLARSHIP

Ethan Crank
William Day
Mary-Micheal Gomez
Olivia Goodspeed
Trevor Seyl
Abbi Lanini
Courtney Wages
Caitlin Wolff

JUNE M LAIR ARTS SCHOLARSHIP

Mirta Santana

SCHOLARSHIP RECIPIENTS & ANGELS

PERFORMING ARTS ANGELS

The Performing Arts Angels exist to provide educational and training opportunities for talented dance, musical theatre, and theatre (performance and design/tech) students in the School of Performing Arts - opportunities not funded through the state or university.

The School of Performing Arts faculty, staff, and students recognize and deeply appreciate all your financial support. It allows us to fulfill our mission to educate and train students for a career in the arts and entertainment industry. To find out how you can become a Performing Arts Angel and support the School of Performing Arts students, please contact our office at 316-978-3899 or give online at www.wichita.edu/give.

We apologize in advance for any omission or errors in this list. Please bring corrections to the attention of Alyssa Scott at alyssa.scott@wichita.edu or 316-978-3368. Listings may shift from one program to another depending on the timing and receipt of gifts.

PERFORMING ARTS ANGELS GIVING FOR FEBRUARY 2020-MARCH 2021

PRODUCER (\$1,000 +)

Jerry Martin
Stev Overstreet
Sally Ottaway
Marty & Donna Perline
Gary Wood
Christine Kubik
Julie & Stan Longhofer
Alan & Sharon Feary
William McKay & Margaret Fulton-McKay
Richard & Cynthia Carl
Dottie Shannon
Brenda Farha (*deceased*)
Emily Bonavia
Paul & Michelle Witte
Denny & Sherry Grady
Belden & Anna Mills
Richard & Debra Campbell

DIRECTOR (\$500 - \$999)

Raymond & Diane Gans
Anita Jones
Jane McHugh
Alan & Sharon Feary
Keith & Georgia Stevens
Marlene Hayes
Steve English
Glenn & Angela Clark
Don & Lora Barry
Ltc. (R) Lionel & Tammy Alford

CHOREOGRAPHER (\$200 - \$499)

Pam Postier

CHOREOGRAPHER (\$200 - \$499)

Dee & Linda Starkey
Pete & Renea Goforth
Don & Elizabeth King
Walter & Kaye Myers
Howard & Rose Marcus
Richard Muma & Rick Case
Shoko Severt
Michael Klaassen & Gerri Colgan

DESIGNER (\$100 - \$199)

Paul & Cynthia Stein
Suzie Couchman Peak
Harriet Hickman
Caroline Baucus
Harold & Evelyn Gregg
Anne Welsbacher
Ward & Nancy Jewell
Richard & Susan Skibba
Rob Simon & Denise Jackson-Simon
John & Cindy Carnahan
Lou & Mallory Medvene
Steven & Kitchel Woods
James & Lisa Vayda
Nelson Warren
Pam Bjork
Hew & Judy Goodpasture

PERFORMER (\$25 - \$99)

Ann Marie Siegwarth
Johanne Pachankis
Tim & Megan Parsley
Kilian McGaffin
Ron & Lee Starkel



WICHITA STATE
UNIVERSITY

COLLEGE OF FINE ARTS

School of Performing Arts



@wichtastateperformingarts



@wichtastateperformingarts



@WSU_SPA



wichita.edu/performingarts

BECOME A PERFORMING ARTS ANGEL!

Visit wichita.edu/give to become a member online with credit card,
or complete this form, enclose a check (payable to the WSU Foundation/
Performing Arts Angels) and
send by mail to 1845 Fairmount, Campus box 2 Wichita, KS 67260.

- | | |
|--|------------|
| <input type="checkbox"/> PRODUCER | \$ 1,000 + |
| <input type="checkbox"/> DIRECTOR | \$ 500-999 |
| <input type="checkbox"/> CHOREOGRAPHER | \$ 200-499 |
| <input type="checkbox"/> DESIGNER | \$ 100-199 |
| <input type="checkbox"/> PERFORMER | \$ 25-99 |

Name _____

Address _____

City _____

State _____ Zip _____

Phone _____