

WICHITA BIOMEDICAL CAMPUS
TRANSFORMING HEALTHCARE
AND DOWNTOWN WICHITA

(READ MORE ON PAGE 8)



ANNUAL REPORT

COLLEGE *of* HEALTH PROFESSIONS

2023



Our strengths set us apart and benefit our students, our communities, and our healthcare industry

- We prepare students for a career in healthcare through state-of-the-art technology, access to industry experts and valuable hands-on learning experiences.
- We are leading change in healthcare education through our innovative culture and passionate faculty and staff who are dedicated to student success.
- CHP students benefit from our exceptional health care industry partnerships, with clinical affiliation sites across the U.S. – from large hospitals and private practices to local schools and neighborhood clinics.

MEANINGFUL WORK. UNLIMITED IMPACT.

From bench to bedside, from clinic to community, to populations, our goal is to shape health care leaders for the 21st century.

Our students, faculty and staff do real work that impacts health care, the economy, and the vitality of our communities.

EXCELLENCE IN EDUCATION

Preparing tomorrow's healthcare leaders

We offer 27 health professions programs from undergraduate through doctoral levels. With our focus on accessibility and affordability, our College has some of the highest program board pass rates in the United States.

Community Impact

Our patient-serving clinics provide affordable, quality care to our community and hands-on learning experiences for residents and students.

Applied Learning

A major focus of our College is ensuring that our students have extensive opportunities for developing skills working in the healthcare industry.

Professional Success

Graduates enjoy high post-graduation employment rates and exceptional success in advanced careers.

ABOUT US

MISSION

Improve the health of the community by engaging students, faculty, staff, and the larger community in the preparation of healthcare leaders, scholars, and professionals.

VISION

Leading change in high-quality healthcare education.

GUIDING PRINCIPLES

- ➔ Strive for excellence and continuous improvement in healthcare education, scholarly engagement, and service to students, colleagues and the community.
- ➔ Equip graduates with applied learning skills necessary to address the challenges in healthcare.
- ➔ Exemplify stewardship and accountability for the resources provided by the citizens of the State of Kansas.
- ➔ Assure that all graduates excel in providing evidence based professional care within an interdisciplinary healthcare system.
- ➔ Promote and sustain a culturally diverse environment, which respects the values and perspectives of individuals and professional disciplines.

ENGAGE. LEAD. EDUCATE.

DEPARTMENTS AND PROGRAMS

DEAN'S OFFICE

SCHOOL OF NURSING

SCHOOL OF HEALTH SCIENCES

SCIENTIFIC FOUNDATIONS DIVISION

COMMUNICATION SCIENCES AND DISORDERS

MEDICAL LABORATORY SCIENCES

PHYSICAL THERAPY

PHYSICIAN ASSOCIATE

PUBLIC HEALTH SCIENCES

SCHOOL OF ORAL HEALTH

ADVANCED EDUCATION IN GENERAL DENTISTRY

DENTAL HYGIENE

LEADERSHIP TEAM

Gregory Hand - Dean

Voncella McCleary-Jones - Associate Dean for Academic, Faculty and Student Affairs

Lisa Belt - Chair, Dental Hygiene

Dean Elledge - Director, Advanced Education in General Dentistry

Evan Ohlman - Interim Chair, Physician Associate

Douglas Parham - Chair, Communication Sciences and Disorders

Debra Pile - Chair and Associate Dean for Nursing Practice

Nicole Rogers - Chair, Public Health Sciences

M'Lisa Shelden - Chair, Physical Therapy

Aisha Waite - Chair, Medical Laboratory Sciences

MESSAGE FROM THE DEAN



It's my pleasure to present our CHP annual report. 2023 was an amazing year of expansion and new beginnings. During 2023, we were able to renovate and expand our educational and research space in two buildings and make great strides in planning the new Wichita Biomedical Campus, a 370,000-square-foot facility in downtown Wichita that will combine the WSU College of Health Professions' School of Nursing, School of Health Sciences and Cassat Speech-Language-Hearing Clinic, WSU Tech's health-related programs, the University of Kansas' School of Medicine-Wichita branch, and the University of Kansas' School of Pharmacy - Wichita Branch. As well, we were able to expand our School of Oral Health's Department of Dental Hygiene into new space adjacent to our Advanced Education in General Dentistry residency program and WSU Delta Dental Clinic. But more importantly, it has allowed us to increase the scope of the educational experience of our students, all with the goal of elevating the university's priorities of: Enhancing access and affordability to our educational programs; Developing the pipelines to provide well-trained healthcare professionals; and Building strong and supportive relationships with the healthcare industry. In the pages that follow, I hope you will celebrate with us the success of our three schools: Nursing, Oral Health and Health Sciences. We will continue to strive for growth and excellence in the areas of research, teaching, community engagement, and clinical practice, and work to realize our vision of Leading Change in Healthcare Education.

Gregory Hand
Dean and Professor
College of Health Professions

FACULTY/STAFF WELCOMES AND FAREWELLS

NEW FACULTY/STAFF

Advanced Education in General Dentistry
Seth Sherwood

Dental Hygiene
Sally Elledge

Physician Associate
Jenny Mora

Communication Sciences and Disorders
Katharine Fitzharris

Nursing
Alex Ambuehl
Titus DeGraaf
Aunna Escalante
Diany Joseph
Quincie Keesecker
Amanda Rose
Terri Shill

Physical Therapy
Leah Fisher
Rachel Quinn

Dean's Office
Anna Aguilar
Carmen Aratea
Kelsey Bryant
Ashley Lejuerne
Erin Shields
Traci Taylor

Public Health Sciences
Andy Sharma

Scientific Foundations Division
Brittni Mayagoitia

RETIREES

Dean's Office
Julie Holmes
(Served at WSU for 13 years)

Dental Hygiene
Kelly Anderson
(Served at WSU for 21 years)

Public Health Sciences
Sonja Armbruster
(Served at WSU for 12 years)

COLLEGE OF HEALTH PROFESSIONS: BY THE NUMBERS

Hosted tours for over **20** high schools,
with more than **1,000** high school students

76 students in the
Cohen Honors College

The College awarded over **\$500,000** to recipients
from over **100 scholarship** programs

More than **230**
students received CHP scholarships

Our **3** community-serving clinics
reported over
13,000 appointments

Over **70%** of students are
first generation
and/or from **underserved**
communities

December 2023 nursing graduates
had a **100%** pass rate on
the **NCLEX** licensure exam

Over **1,800**
students enrolled in fall 2023

Approximately
500
students graduated

12
student
organizations

REVOLUTIONIZING HEALTHCARE EDUCATION

WICHITA
BIOMEDICAL
CAMPUS™



WICHITA BIOMEDICAL CAMPUS



WICHITA BIOMEDICAL CAMPUS CONTINUES TO PROGRESS

Wichita State University, WSU Tech and the University of Kansas are moving forward with plans to create the Wichita Biomedical Campus, which includes an approximately 350,000-square-foot, \$205 million facility located in the heart of downtown Wichita. The campus will combine WSU's School of Health Sciences, School of Nursing and Speech-Language-Hearing Clinic, WSU Tech's Health Professions programs and the Wichita campuses of KU School of Medicine and KU School of Pharmacy into one location. Pooling the collective resources and successes of our institutions will bring remarkable opportunities for collaboration, innovation and research.

The Wichita Biomedical Campus will be the southern anchor and education core of a thriving healthcare corridor, where health care services, education, research and technology will be established near existing private hospitals and healthcare providers.

The biomedical campus building will be located at the intersection of Broadway Ave. and William St., across from the Kansas College of Osteopathic Medicine.

The biomedical campus building is expected to be completed by the end of 2026. CHP programs will move to the new building as individual areas are completed.



EXCELLENCE IN HEALTHCARE EDUCATION

COLLEGE UPDATES

DOCTOR OF PHYSICAL THERAPY PROGRAM EXPANDING CLASS SIZES AND FACILITIES

The Department of Physical Therapy is increasing the number of students in each class from 40 to 60. Renovations were completed at WSU Old Town to expand classrooms and lab spaces to accommodate more students. The department also purchased new PT equipment and will increase the number of faculty members, administrative support team members and graduate teaching assistants to ensure continued high-quality education and support. The first expanded class will begin in June 2024.

Growing the PT program at WSU is a significant step toward meeting the growing demand for skilled physical therapists and improving healthcare in the region. The program's expansion will allow us to serve more students and enrich their educational experience to create a stronger workforce capable of meeting the diverse needs of the community.



SCHOOL OF ORAL HEALTH EXPANSION AND UPGRADES

In fall 2023, the Department of Dental Hygiene moved classes to the School of Oral Health on Oliver St., one mile north of the WSU Main Campus. They have joined the Advanced Education in General Dentistry program and WSU Delta Dental Clinic. The second floor of the School of Oral Health building was renovated, including the addition of a lounge area, remodeled biomaterials lab, and new dental equipment. Dental Hygiene students get real-world experience working alongside dentists and dental hygiene faculty at the WSU Delta Dental Clinic.

"The School of Oral Health is in a good location, has plenty of parking and is easily accessible...the decor is bright and elegant, and the school features the WSU General Dentistry Practice, with a large number of dentists, residents, and registered dental hygienists... I appreciate the remodeled lecture spaces, labs, lunchroom and study areas." – Michael Sengvilay, Dental Hygiene student



LEADING CHANGE IN HEALTHCARE EDUCATION

COLLEGE OF HEALTH PROFESSIONS AND ASCENSION VIA CHRISTI HAVE AFFILIATED TO GROW THE PIPELINE OF HEALTH CARE PROFESSIONALS

The College of Health Professions and Ascension Via Christi's healthcare system have created a strategic initiative to provide a professional pathway of qualified health care professionals to the region. Through the affiliation, Ascension Via Christi's hospitals have provided office and classroom space to the College of Health Professions' School of Nursing and School of Health Sciences, expanding WSU students' access to working with health care professionals in the hospital setting. The affiliation will provide a framework for WSU and Ascension Via Christi to help fuel the pipeline of trained health care professionals entering the field and further enhance professional growth opportunities for current and future Ascension Via Christi associates and WSU students. The signing ceremony was held May 12, 2023.

Ascension Via Christi is the first official affiliated teaching hospital for the College of Health Professions. The proximity of the new Wichita Biomedical Campus to Ascension Via Christi St. Francis hospital will further strengthen our partnership, facilitating more collaboration opportunities and a rich environment for learning, innovation, and interprofessional education.

To celebrate the new partnership, the CHP hosted an Open House for Ascension Via Christi associates and medical staff in the College's space at St. Francis hospital. The College also co-hosted a celebration at Mark Arts Center to commemorate the 10th anniversary of the Structural Heart Program at Ascension Via Christi, as well as our new partnership.



Open House celebration at Ascension Via Christi St. Francis hospital



Dr. Brett Grizzell at the Ascension Via Christi partnership ceremony



Mayor Lily Wu at the Ascension Via Christi partnership ceremony

ASCENSION VIA CHRISTI ASSOCIATES OFFERED PREFERRED RATE FOR RN TO BSN PROGRAM

Ascension Via Christi nurses are now being offered a preferred rate for the online Registered Nurse (RN) to Bachelor of Science in Nursing (BSN) program at Wichita State. The program is part of the WSU/Ascension Via Christi affiliation that will help Via Christi associates across the nation achieve their bachelor's degree and enhance professional growth.

COLLEGE OF HEALTH PROFESSIONS HOSTS SECOND ANNUAL HIGH SCHOOL HEALTH SCIENCES TEACHERS WORKSHOP

The CHP hosted the second annual Kansas High School Health Science Teacher's Workshop, providing high school teachers with educational opportunities and insights into the latest health industry topics. The workshop featured speakers Dr. Sam Smith and Dr. Jennifer James from CHP, as well as Dr. Bassem Chehab and Dr. Brett Grizzell, leaders of the groundbreaking Structural Heart Program at Ascension Via Christi, who presented about their innovative work on heart valve replacement technology and robotic surgery.

A panel of Ascension Via Christi associates, led by former Shocker and basketball standout Ron Baker, also shared information about job opportunities, shadowing opportunities and community outreach. Attendees participated in skill-building exercises and toured the cutting-edge laboratories, including the Gross Anatomy, Human Simulation, and School of Nursing Simulation labs. The teachers received valuable information to take back to their classrooms, with the goal of sparking interest in healthcare careers among young students. Ascension Via Christi and the College of Health Professions sponsored six travel scholarships for teachers outside of the Wichita area to attend the workshop.



High school teachers at the second annual Health Science Teacher's Workshop

COLLEGE HIGHLIGHTS

CHP PRESENTS NATIONALLY RECOGNIZED CARDIAC SURGEONS DISCUSSING MEDICINE IN AGE OF AI, DIGITAL TRANSFORMATION

The College of Health Professions was pleased to host Drs. Brett Grizzell and Bassem Chehab with Ascension Via Christi for the presentation “Medicine in the Age of Artificial Intelligence and Digital Transformation.” Drs. Grizzell and Chehab are nationally renowned experts in heart surgery and are founding members of the Structural Heart Program at Ascension Via Christi. They spoke about the exciting new technologies that are transforming medicine and healthcare.



Watch the [recording of the presentation on YouTube!](#)

FACULTY PROVIDING PHYSICAL THERAPY SERVICES TO CHILDREN THROUGH SCHOOL SERVICE CONTRACTS

Our Physical Therapy program has service contracts with several school districts across the state of Kansas. Because of these contracts, students - particularly in rural areas - now have access to school-based therapy services from faculty in our physical therapy program. This is just one example of the impact our clinical faculty have on the community by improving the quality of life for children and their families, while helping address healthcare disparities in underserved communities. These contracts provide additional opportunities for PT students interested in working in schools to receive mentorship, coaching, and supervision prior to full-time clinical rotations. Additionally, these contracts further demonstrate our College’s commitment to addressing the unique needs of children and establishing our physical therapy program as the national leader in pediatric training.



PHYSICAL THERAPY HOSTS ICAN BIKE PROGRAM FOR DISABLED CHILDREN

The Physical Therapy department, along with Davis-Moore Auto Group, hosted an iCan Bike event at Wichita State. Students, faculty and staff in the Physical Therapy program and other volunteers spent the week helping kids with disabilities learn to ride a bicycle. The program was a big success and a very rewarding experience for everyone involved. iCan Bike is part of iCan Shine, a national organization that provides recreational programs for people with disabilities.

DEPARTMENT CHAIRS RECORD NEW VIDEOS FOR WEBSITE

Department chairs recorded personalized videos for the website to help prospective students get a better understanding of each department and profession. The goal is to provide valuable insights and a more personal connection for students considering their academic and career paths. Check out each department’s website to see the videos.

Follow us on social media to see the latest stories!



ALUMNI/FRIENDS OF THE COLLEGE

NURSING CLASSES CELEBRATE 50TH REUNIONS

In Sept. 2023, the College of Health Professions hosted friends and alumni at the Candle Club to celebrate the 50th reunions of the Nursing classes of '71, '72, and '73. The group had a great time rekindling old friendships and



sparkling new ones. The classes also marked the occasion by pooling their funds and starting the process to create a scholarship for future nursing students. A big thank you to Janet Bahr (class of '73) for assisting with the event and to all the attendees for making this a very memorable celebration.

Contributions to the nursing scholarship can be made by contacting Amy Tully at 316-978-3805 or amy.tully@wichita.edu.

ALUMNI SPOTLIGHTS

PAMELA CLANCY AMMAR | Dental Hygiene

Growing up, Pamela Clancy Ammar always wanted to be a dentist or doctor and decided to pursue dental hygiene at Wichita State. Pamela was a highly involved student at WSU, where she was a cheerleader, president of Delta Delta Delta sorority, and president of the Student Dental Hygiene Association. In 1980 she graduated cum laude with a BS in Dental Hygiene and a bachelor’s degree in Health Sciences.

After graduation she worked part-time as a dental hygienist while working on a research program for Johnson and Johnson, where she and a dentist provided dental care and education to kids at Wichita Public Schools. For a time, she also taught at WSU as an adjunct clinical instructor.

Pamela felt a calling to practice law and credits former District Attorney Nola Tedesco Foulston for inspiring her. She went on to complete her J.D. degree from the University of Denver, finishing in the top 25% of her class. She worked as a medical malpractice lawyer for many years before retiring in 2008 as a trial lawyer.

Pamela currently performs pro bono work, which affords her the opportunity to volunteer and serve on boards for organizations in the community. Pamela is very involved at WSU - she is the Board Chair-Elect for the WSU Foundation and Alumni Engagement and serves on the National Advisory Council. Pamela also serves as the Chair of the Dean’s Advisory Council for the College of Health Professions. She said the group’s goals align with what’s important to her - being a champion for sciences and health-related services. She says it’s an honor to give back and stay connected while moving the college forward and making sure students receive the best possible education and experience.

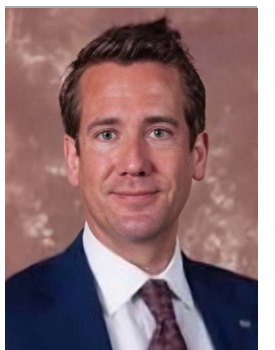


JASON LADNER | Public Health Sciences

Jason Ladner grew up in Dodge City, KS and came to Wichita State for college. Moving to a larger city and going to school while working full-time was a big change for Jason, but he was able to adjust in part because of his supportive professors. Overall, he had a very positive experience at WSU. Even at the turn of the century, Jason knew there was something big on the horizon in healthcare and received his degree in Healthcare Services Organizations & Policies in 2001.

Jason has worked in several high-profile roles and businesses throughout his career. After graduation, Jason worked for Wamego Hospital and Wesley Medical Center before getting into medical sales for Covidien, Johnson & Johnson, and other top medical device companies. He was then recruited to IMA Wealth to be VP of Customer Relationships. His work in business development, strategy and relationship building throughout the years brought him to his current role as a Business Development Executive at Blue Cross Blue Shield of Kansas.

For the past 23 years Jason has continued to stay engaged with his alma mater, advocating for and championing Wichita State. He is working on various projects and proposals for the College of Health Professions and has acted as a conduit between philanthropic developments and talent pipeline efficiencies. He has also started collaborations with the Barton School of Business at WSU and the WSU Tech Healthcare Future Ready Center.



DEVELOPMENT UPDATES

Message from the CHP Senior Director of Development

2023 was an exciting and historic year in the College of Health Professions. The remarkable generosity from our supporters continuously inspires me, but this past year has been especially exciting.

Thanks to the passion and generosity of our donors, the CHP added 17 new scholarships during fiscal year 2022-23. The impact of these donations is profound, as they have already, and will continue, to support students and programs within the College.

We have many important projects and opportunities on the horizon, and the College is poised for continued growth and success. It's an honor to work with so many people who are all dedicated to providing our students with the best education and supporting the College as we move into the future. Every gift, large or small, is important and we are incredibly grateful to all our donors. Thank you for your commitment to Wichita State and giving me the opportunity to help advance our mission.

– Amy Tully, Senior Director of Development



"I am grateful for the opportunity to be a part of the College of Health Professions as we look to the future of healthcare research and training. The College is on the cusp of a revolutionary shift in healthcare education and it's exciting to engage friends and donors around the excitement."

FRIENDS OF THE COLLEGE



Stuart Ray

Stuart Ray, along with Davis-Moore Auto Group, sponsored the iCan Bike program at WSU to help kids with disabilities learn to ride a bicycle.

"It was an easy decision to sponsor the iCan Bike program as I was very familiar with the impact of this camp on a community. I had volunteered for the iCan Bike program before... and it was one of the most rewarding volunteer and philanthropic experiences I've had... The gift of teaching someone with physical and/or neurodevelopmental disabilities is invaluable to the individual and their families. It allows for a measure of independence and comradery. Many of these children will never receive a driver's license and their ability to ride a bike greatly increases their chances of finding gainful employment. It's also such a gift to watch the children on the final day riding a bike independently for the first time. It's priceless."



Randall and Regna Whittaker

Randall and Regna Whittaker fund the Regna L. Behring Whittaker Endowed Scholarship in Nursing at WSU.

"Education is a priority for us. After joining our family business, we both decided to further our education. Randall enrolled as a 40-year-old WSU business student and graduated in 1996. Regna chose to advance her nursing credentials and graduated with a Master of Science in Nursing.

Regna did her internship at Student Health and loved working with students so much that she accepted a Family Nurse Practitioner position at Student Health Services at WSU. This turned into a 17-year career!

We chose to fund a nursing scholarship and have included WSU in our estate gifting plan. We believe the future of healthcare in Wichita and rural Kansas is bright given the caliber of students pursuing a career in nursing. We are honored to contribute to their success."

SCHOLARSHIP SUPPORT

Our students are grateful for financial support from our generous donors. Here's what some of them are saying.

MORGAN SUTTER | Communication Sciences and Disorders

"The J. Keith Graham Endowed Scholarship has helped alleviate some of the stress that comes with paying for school. Due to this, I am able to focus more on my classes without the financial aspects of school sitting at the back of my mind. This has been hugely impactful for me, and I am very grateful for this!"

– Recipient of the **J. Keith Graham Endowed Scholarship**



CAMERON BLACK | Nursing

"My scholarships gave me the ability to reach my dreams of healing others. I am able to save lives because of the gifts I received."

– Recipient of the **Charlotte Foster and Brian Foster Nursing Scholarship, Geney & Cramer Reed Endowed Scholarship/Fellowship, and the Betty Dutcher & Emylou Keith Endowed Nursing Scholarship**



ISAI CHAVIRA | Medical Laboratory Sciences

"The Southcentral Pathology Scholarship has impacted my education greatly, giving me the ability to look into grad school in the future. Not only has it given me a chance to pursue a field that I'm passionate about, it also gave me great relationships that'll last a lifetime. I couldn't have done this without the great professors and friends that are in the program. Without them I wouldn't be where I am today."

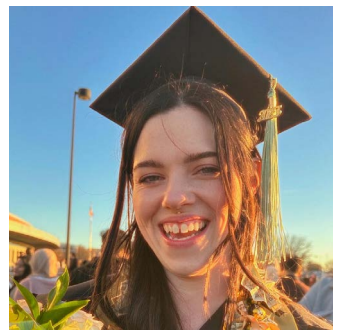
– Recipient of the **Southcentral Pathology Scholarship**



SABRINA GOOCH | Communication Sciences and Disorders

"As an adult-learner who is funding their own education, the financial support of scholarships from the CSD department has been massively helpful. To be given a CSD scholarship has allowed me to lower my professional workload and focus on my studies, opening opportunities that weren't otherwise available to me. I am very grateful for the generosity and support, and very proud to be a CSD Shocker!"

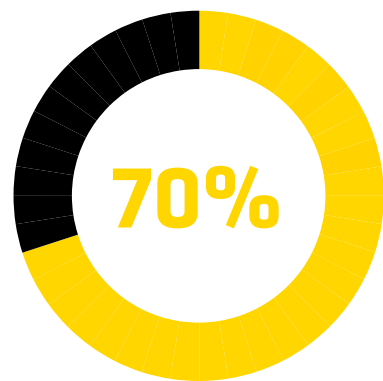
– Recipient of the **J. Keith Graham Endowed Scholarship, Hal Edwards Memorial Scholarship in Speech Language Pathology, and Sid Faires Memorial Endowed Scholarship/Fellowship**



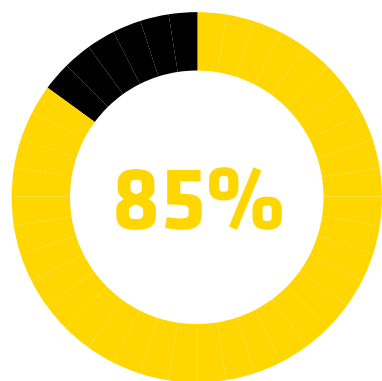
To support our students through scholarship donations, contact Amy Tully with the WSU Foundation and Alumni Engagement at 316-978-3808 or visit foundation.wichita.edu/give/.

STUDENTS

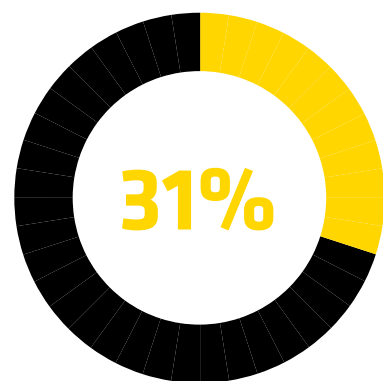
BY THE NUMBERS



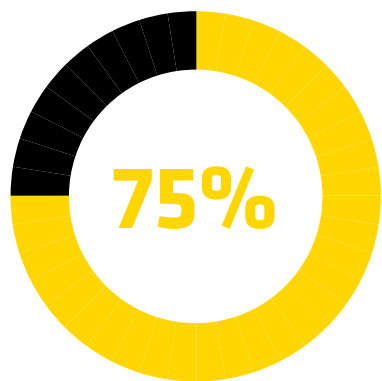
First Generation and/or from underserved communities



From the state of Kansas

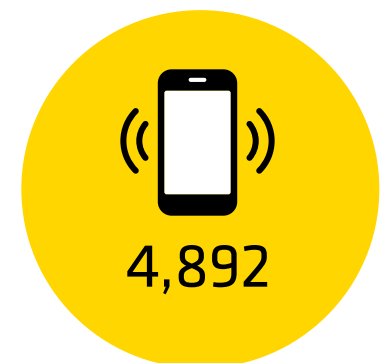


Over the age of 25

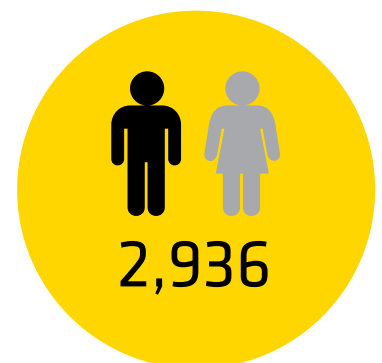


Undergraduate students

ADVISING OFFICE OUTREACH



NUMBER OF EMAILS, TEXTS AND CHAT MESSAGES SENT TO STUDENTS



NUMBER OF ADVISING APPOINTMENTS WITH STUDENTS



➔ The CHP has the highest proportion of first generation and underserved students among the academic colleges.



INAUGURAL WSU NURSING CLASS IN MANHATTAN TAKES OATH AT NIGHTINGALE CEREMONY

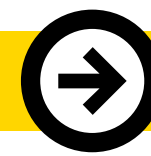
Nursing students on the WSU main campus and Kansas State University campus celebrated their [Nightingale Nursing Commitment Ceremonies](#). Students recited and signed the modern Nightingale Pledge as a commitment to uphold the standards of the nursing profession. The two ceremonies took place simultaneously in Wichita and Manhattan and were live streamed to include both locations. This was the first Nightingale Ceremony for WSU nursing students on the K-State campus, which included the inaugural BSN class. The WSU nursing program is part of the dual-degree Pathway to Nursing program with K-State. Learn more about the program at wichita.edu/PathwayToNursing.

HOSA CHAPTER ESTABLISHED

The newly formed HOSA (Health Occupations Students of America) chapter at Wichita State provides students who are interested in health professions a variety of opportunities to expand their knowledge, skills and leadership through community service, hearing from industry speakers, applied learning experiences, conferences and events. HOSA's mission is to empower members to become leaders in the global health community through education, collaboration, and experience. For more information about HOSA, contact wichitastatehosa@gmail.com.



"HOSA is a great organization for members to gain the experiences they need for their education and future careers in healthcare. Student members have access to shadowing and mentoring opportunities as well as the ability to compete and network with other pre-health professionals at conferences. I am seeing firsthand that HOSA is helping our members achieve greater insight into their field of interest and land jobs while they are in school!"
 – **Brittini Mayagoitia, Faculty Advisor**



CHP STUDENT GROUPS

The College of Health Professions has several groups that provide opportunities for students to get involved, serve the community, and network with healthcare professionals and industry partners.

FUTURE HEALTH CARE PROFESSIONALS

HOSA (HEALTH OCCUPATIONS STUDENTS OF AMERICA)

AGING STUDIES STUDENT ORGANIZATION

HEALTH (HEALTH EDUCATION ADVOCATES FOR LEADERSHIP, TEAMWORK, AND HUMANITY)

KANSAS ASSOCIATION OF NURSING STUDENTS

MEDICAL LABORATORY SCIENCES STUDENT ORGANIZATION

NURSES' CHRISTIAN FELLOWSHIP

PA STUDENT ORGANIZATION

PRE-PHYSICAL THERAPY STUDENT ORGANIZATION

PRE-PA STUDENT ORGANIZATION

STUDENT AMERICAN DENTAL HYGIENISTS' ASSOCIATION

WICHITA STATE UNIVERSITY STUDENT SPEECH-LANGUAGE-HEARING ASSOCIATION

PATIENT SERVING CLINICS

IMPROVING THE HEALTH OF OUR COMMUNITIES

Our three patient-serving clinics provide high quality, affordable health care to our community. All clinics are open to the general public and faculty, staff and students at Wichita State.

EVELYN HENDREN CASSAT SPEECH-LANGUAGE-HEARING CLINIC

The Cassat Speech-Language-Hearing Clinic provides services to people across the lifespan who have communication difficulties, including speaking, hearing, swallowing, and spoken and written language impairments. wichita.edu/SLHclinic

- 3,522 appointments in 2023
- Silver winner of the Best of Wichita award in the "Audiologist/Hearing Center" category from the Wichita Eagle.
- The clinic offers area-specific programs and support groups for aphasia, autism, fluency, literacy and more. The Clinic also offers programs for children, including Fluency and Literacy summer camps.
- The clinic repairs and services most hearing aids, regardless of where they were purchased. The Clinic also offers replacement batteries for hearing aids from a variety of hearing aid brands.



DELTA DENTAL OF KANSAS FOUNDATION DENTAL HYGIENE CLINIC

The Dental Hygiene Clinic offers a wide range of low-cost preventative, therapeutic and educational services. wichita.edu/DHclinic

- 5,087 appointments in 2023
- Purchased nearly \$60,000 of new equipment, including radiology, clinic and laboratory equipment.
- The clinic serves multiple communities, including children and underserved populations. The cost of clinical care is scaled to serve underserved populations.



WSU GENERAL DENTISTRY PRACTICE

The WSU dental clinic provides a full range of services including cleanings, whitening, fillings, and implants, along with in-house specialists for periodontics, endodontics, oral surgery, and prosthetics. wichita.edu/WSUdentalclinic

- 4,520 appointments in 2023
- The dental clinic launched a new dental discount program for WSU students and their spouses and children. This discount applies to all dental services, including cleanings, fillings, teeth whitening, dental implants and more.
- The dental clinic uses cutting-edge technology, including digital X-rays to reduce exposure to radiation and same-day dental crowns using 3-D printing.



DEAN'S ADVISORY COUNCIL

The CHP Dean's Advisory Council is comprised of a distinguished group of local and national academic, community and industry leaders. Their collective expertise, perspective and strategic counsel on the most pressing matters of the College of Health Professions is critical to realizing our vision of "Leading Change in High-Quality Healthcare Education."

The Dean's Advisory Council (DAC) met in the spring and fall of 2023. DAC members participated in strategic initiatives and planning for the College and received updates on the Wichita Biomedical Campus and enrollment and retention management. Members also heard presentations from representatives with the Advanced Education in General Dentistry program, Physician Associate program, Department of Medical Laboratory Sciences, Scientific Foundations Division, and the WSU Foundation.

NEW MEMBERS

- Claudio Ferraro**
Chief Operating Officer, Ascension Medical Group Via Christi, P.A.
- Mark Finucane**
Managing Director with Alvarez & Marsal Healthcare Industry Group, New York City
- Jeff Fluhr**
President, Greater Wichita Partnership

- David Leslie**
Chief Nursing Officer, Wesley Healthcare
- Jay Moskowitz**
James Buchanan Duke SmartState Chairman Emeritus for Healthcare Quality and Retired Health Scientist Administrator and Dean

2023 MEMBERSHIP

- Joel Alderson**
President, Southcentral Pathology
- Pamela Clancy Ammar**
Attorney, President of the Board-Kansas Humane Society, Chair of the CHP Dean's Advisory Council
- Chad Austin**
CEO, Kansas Hospital Association
- Susan Butler**
Global Head, Corporate Development and Strategy at Astrix Technology Group
- Tim Church**
Physician and scientist, Chief Medical and Strategy Officer-Naturally Slim, Cofounder and Board Member-Catapult Health
- Christine Faulk**
Associate Chief of Staff for Research at the Dole VA Medical Center
- Chad Hanson**
Senior Vice President with Emprise Bank
- Robert Kenagy**
President and CEO, Stormont Vail Health
- Laurie Labarca**
Hospital President for Ascension Health-Ascension Via Christi Hospital St. Teresa and Ascension Via Christi Rehabilitation Hospital
- Adam Lukens**
Private practice dentist, Wichita-Sedgwick County Oral Health Coalition, Board of Trustees for the Kansas Dental Association
- Tiffany Masson**
President and Chief Executive Officer of the Kansas Health Science Center
- Ambur Miller**
Vice President, Professional Relations at Delta Dental of Kansas
- David Ramos**
Emergency Medicine physician for Salinas Valley Memorial Healthcare System in Salinas, CA
- Arthur Ross**
Pediatric surgeon, former campus executive or Dean for four university based medical schools, academic medicine consultant
- Marq Sams**
Periodontist, Implant and Perio Center of Kansas

To support the important work of our clinics, contact Amy Tully with the WSU Foundation and Alumni Engagement at 316-978-3808 or visit foundation.wichita.edu/give/.

NOTABLE AWARDS/ACCOMPLISHMENTS



CHP AWARDS

Rodenberg Faculty Excellence in Teaching Award:
Michelle Lamp (School of Nursing)

Hodson Outstanding Research Faculty Award:
Benjamin Kirby (Communication Sciences and Disorders)

Outstanding Staff Support Award:
Coni Nutter (Dean's Office)



WSU AWARDS

WSU President's Distinguished Service Award:
Jennifer Anozie (Dean's Office)
Suzanne Hawley (Public Health Sciences)
Sheri-Lyn King (Communication Sciences and Disorders)



NOTABLE AWARDS/ACCOMPLISHMENTS

Catherine Worthingham Fellow of the American Physical Therapy Association (APTA):
Rob Manske (Physical Therapy)

Kansas Public Health Association Virginia Lockhart Health Education Award:
Amy Drassen Ham (Public Health Sciences)

Sandra Mitchell Memorial Award for Community Service from the American Board of General Dentistry:
Caleb Murray (Advanced Education in General Dentistry)



COLLEGE OF HEALTH PROFESSIONS AT WICHITA STATE UNIVERSITY
1845 Fairmount Street, Wichita, KS 67260-0043

VISIT US ON SOCIAL

