

**PARAGUAY HONORS
SERVICE-LEARNING
STUDY ABROAD PROGRAM**

INFORMATION SESSION



KANSAS PARAGUAY PARTNERS



PARTNERS *of the* **AMERICAS**

KANSAS - PARAGUAY



KANSAS PARAGUAY PARTNERS AREAS OF INVOLVEMENT:

- Agriculture
- Citizen Participation
- Cultural Arts
- Emergency Preparedness
- Health
- Education
- International Trade
- Natural Resources
- Women in
Development

WHY?

Connect, Serve, Change lives

PARAGUAY



detail of obverse



detail of reverse



PARAGUAY FACTS

OFFICIAL LANGUAGES:

- Spanish and Guarani

RELIGION:

- 90% Roman Catholic

POPULATION:

- Over 6 million

GOVERNMENT SYSTEM:

- Democratic;
president; congress
and senates

PARAGUAYAN FOOD

- The cuisine in Paraguay is based on corn meal, beef, starch, fresh vegetables and fruits.



- Paraguayan Barbecue
- Mbeju
- Sopa Paraguaya
- Chipa Guasu
- Chipa
- Empanadas
- Terere (traditional drink)



WSU ALUMNI IN PARAGUAY



SUMMER PROGRAM DETAILS:

PURPOSE OF PROGRAM

Students will have the opportunity to learn from locals and learn more about Paraguayan culture and about South America in general through **observing in a nonprofit**. Students will observe in the nonprofit for several days during the program in an area of their choice.



PROGRAM BASICS

- Location: Asunción, Paraguay (capital of Paraguay and largest city)
- Dates: June 9-22, 2024 (2 weeks in summer 2024)
- WSU Instructor: Ann Burger
- Course: HNRS 398 for 1 or 3 credits

Program Application Deadline: November 17, 2023



NONPROFIT FOCUS AREAS

- Public Health Management
- Sustainable Economy Development
- Microbusiness
- Education Management (Early Childhood, Elementary, High school & University)
- Social Entrepreneurship
- Arts/Music



WHO CAN PARTICIPATE?

- Anyone (all majors, honors or non-honors students, undergraduate and graduate)
- Targeted at the following students:
 - Honors students
 - Students studying Spanish
 - Engineering students to fulfill Engineering+ requirement
 - International Studies/International Business majors (cultural/language experience or study abroad requirement for IB majors)
 - Anyone who has an interest in learning about South America
 - Anyone interested in a service-learning experience



DO I NEED TO SPEAK SPANISH?

- Simple answer: NO
- Students do not need to speak any Spanish to participate in this program. We will have interpreters. However, for those who are studying Spanish; this will be an excellent way to get full immersion in the language and opportunities to practice with host families, in the nonprofit, during cultural visits and more.

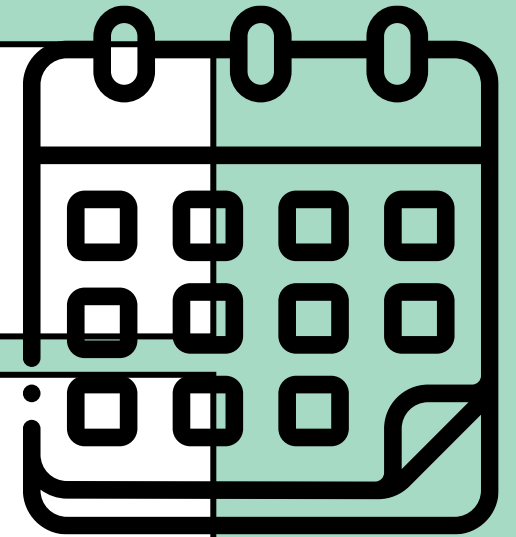


CULTURAL BENEFITS

- Learn from the locals
- Visit sites including museums and other places of interest
- Learn about other cultures and nonprofits in Paraguay
- Site visits to several nonprofits
- International service learning in the nonprofit in Paraguay (observe and learn from their staff)



TENTATIVE SCHEDULE



- **June 8 or 9:** Arrive to Asunción
- **June 10:** Orientation/Overview by CPK lecturers and possibly tour of downtown
- **June 11 & 12:** Lecture by local instructor (or when you arrive to your nonprofit) and site visits to three nonprofits
- **June 13 & 14:** Observe all day at nonprofit
- **June 15 & 16:** Weekend activities with host families
- **June 17:** First debriefing w/ WSU instructor & possibly cultural activity in the afternoon
- **June 18 & 19:** Observe all day at nonprofit
- **June 20:** Second debriefing w/ WSU instructor & possibly a lecture by a local instructor
- **June 21:** Possibly do cultural activity all day & farewell
- **June 22 or 23:** Depart Asunción

ASUNCIÓN



COSTS

- **Program Fee: \$850**

- in-country transportation
- housing
- most meals
- placement at nonprofit
- cultural/sightseeing activities

- **Other costs approximately: \$1,900**

- flights
- international health insurance
- extra meals not provided by host family

- **Tuition and fees for 1 or 3 credit hours** at WSU based on summer 2024 tuition rate

\$SCHOLARSHIPS



- **WSU Travel Seminar Scholarships up to \$2,000 each**

- Deadline to apply: November 6, 2023
- Must be participating in a WSU hosted travel seminar program for summer 2024
- Study Abroad Scholarship Application which includes personal statement and 2 references
- Based on financial need (students must have FASFA 2023-2024 on file and preference will be given to Pell Grant recipients)
- More info and to apply: wichita.edu/TravelSeminarScholarships

- **Honors College Cohen Enhancement Scholarships up to \$4,000 each**

- Deadline to apply: October 15, 2023
- Must be a degree-bound undergraduate student currently enrolled at Wichita State University in the Dorothy and Bill Cohen Honors College
- Scholarships awarded based on merit of proposed activity and without regard to financial need
- More info and to apply: wichita.edu/honors

\$SCHOLARSHIPS



•**WSU Study Abroad Office Scholarships (SGA, Garvey, and Dr. Dharma DeSilva) up to \$1,500 each**

- Deadline to apply: March 1, 2024
- Study Abroad Scholarship Application which includes personal statement and 2 references
- Based on financial need (students must have FASFA 2023-2024 on file and preference will be given to Pell Grant recipients)
- More info and to apply: wichita.edu/StudyAbroadScholarships

•**Gilman Scholarship up to \$5,000 each**

- Deadline to apply: 1st cycle – October 5, 2023; 2nd cycle – March 7, 2024
- Must be receiving a Pell Grant and be a U.S. citizen
- Gilman Scholarship Application including a statement of purpose, community impact essay and transcripts
- More info and to apply: gilmanscholarship.org

•**Additional Scholarship Resources:** wichita.edu/StudyAbroadScholarships

HNRS 398 TRAVEL SEMINAR COURSE



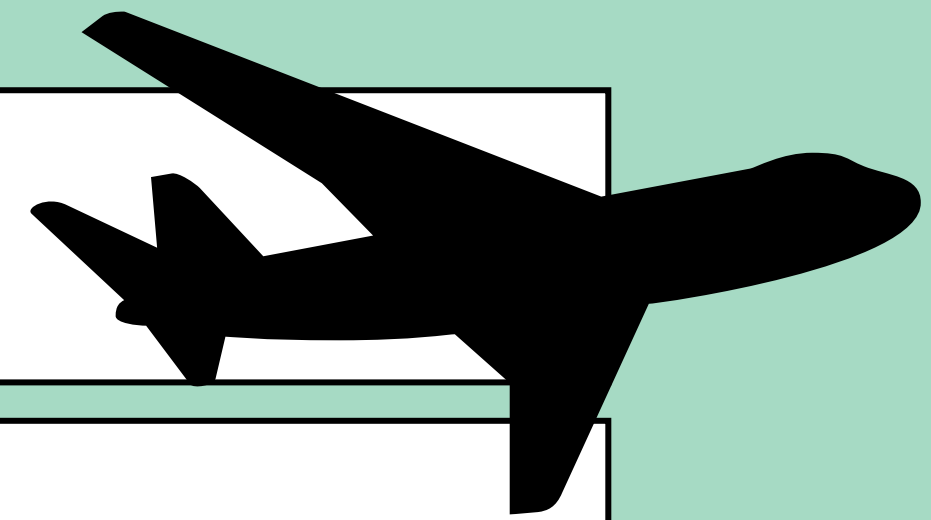
- Open to all students
- Students will choose 1 or 3 credit hour course under HNRS 398 for the program
- Enrollment will be in Summer 2024 during month of June
- We will meet a few times in the spring, prior to departure, for the course as well as early June
- Some assignments will be due prior to departure and others submitted during or upon return

HOST FAMILIES

- Students will be placed with a host family in Asunción
- Each host family generally has at least 1 English speaker, and many have children that studied in the U.S.
- Host families will provide most meals and much of the transportation to/from activities



TRAVELING TO PARAGUAY



- Students will be responsible for purchasing their own flight
- You can purchase with other students to travel together, or to travel with the instructor
- You will fly into Asunción, Paraguay (ASU airport code)
- Most flights from Wichita will have 1 layover in the U.S. (typically Houston, Atlanta or Dallas) and then, 1 layover in Latin America (typically Panama City, Panama, Santiago, Chile, or São Paulo, Brazil)



QUESTIONS?

Faculty/Staff leader: Ann Burger
ann.burger@wichita.edu

