

Women of Wichita State University Newsletter

August 2019

Issue 1



President's Welcome

Classes have ended for the spring and the heat of summer is here. We planted succulents in March and my two are growing every day. I hope everyone else's plants are doing well. In April we went to Crestview and had a wonderful presentation from Major Kelly J. Junkins from McConnell Air Force Base.

Even with heavy thunderstorms, we had a fantastic Wine Tasting Fundraiser in May. Everyone enjoyed themselves and bid up the silent auction items. We raised and received donations of \$1,943 for the WWSU scholarship. There were also donations of \$50 to CUW and \$175 to Dames scholarships.

Mary Yeager a long-time member and coordinator for Friends & Food passed away. I loved her smile and she will be sorely missed. Virginia Murphey has graciously agreed to take over the interest group Friends & Food.

Angela Schultz has left WSU so we are looking for her replacement as Vice President, Programs/Co-Social Chair. We have filled these board positions; Hannah Bates, Website/Publicity Chair, and Blair Miller, Co-Social Chair. We have an open board position for the Co-Fundraiser Chair if anyone is interested.

Look for your membership renewal opportunity in early August!

Have a wonderful summer and I look forward to seeing everyone in the fall.

<https://www.wichita.edu/faculty/womenofwsu/wsuwomen/>.

2019-2020

Executive Board

President - Patsy Selby

1st VP/Membership -

Shannon Koehn

2nd VP/Programs -Co-Social Chair

Vacant

Secretary - Lauren May

Treasurer - Deanna Carrithers

Board

Auditor - Lauren May

Courtesy - Mary Herrin

Fundraiser -

Dr. Marche Fleming-

Randle

Interest Groups -

Angela Paul

New Members -

Twyla Hill

Newsletter - Adrienne McAlpine

Publicity/ Website -

Hanna Bates

Scholarship Dames -

JoLynne Campbell

& BreAnn Gilkey

Scholarship CUW -

Shannon Koehn

& Alex Oakley

Co-Social Chair - Blair Miller

Board Meetings

The Board will meet at the
Woodman Alumni Center in the
Angle Conference Room from
03:30 p.m. to 04:30 p.m.

Future Dates: Tuesday 08/13
Wednesday 09/11
Thursday 11/14

Women of Wichita State University

Dames Scholarship winners:

Stacy Jeffries:

Maronda D. Blankenship:

Council of University Women (CUW) Scholarship winners:

Aubrey C. Downie:

Yu-hsuan Chang:

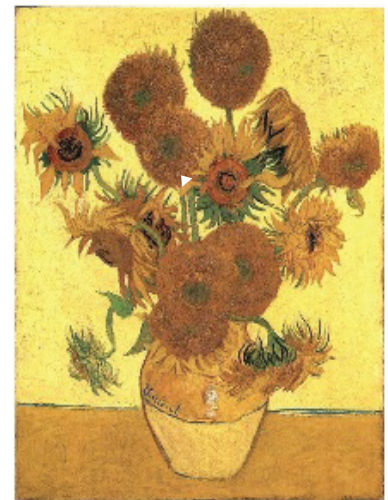
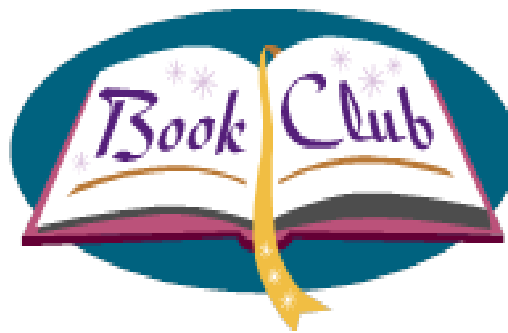


Courtesy Report

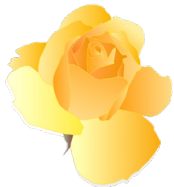
Chair: Mary Herrin

Please contact

Email: mary.herrin@shockers.wichita.edu

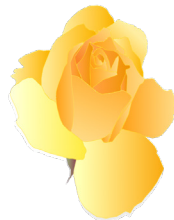


Co-chair: Angela Paul work: 978-5084 or
 email: angela.paul@wichita.edu and
 Co-chair: Twyla Hill, work: 978-7151



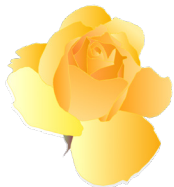
September 5, 7:00 p.m.

Theme: Book discussion: *Pachinko* by Min Jin Lee.
 Host: Kathy Strattman



October 3, 7:00 p.m.

Theme: Book discussion: *Kindred* by Octavia Butler.
 Host: Barb Smith



November 7, 7:00 p.m.

Theme: Book discussion: *The Evolution of Calpurnia Tate* by Jacqueline
 Kelly.
 Host: Charlotte Kleffner

December 5, 7:00 p.m.

Theme: Book discussion: *Becoming* by Michelle Obama.
 Host: Angela Paul



Upcoming WWSU Events

September 18, 2019 at 11:30 am
 Women of Wichita State University's
 Meet and Greet at the Marcus Welcome Center

Treasures Group

RSVP for each meeting to **Charlotte Kleffner:**
kleffnercf@aol.com
or 686-3274 - Additional events forthcoming!

Larksfield Place: 7373 East 29th Street North
7:00 p.m.



September 27
Charlotte Kleffner

**FRANK R. KLEFFNER'S WORLD WAR II
LETTERS HOME (1944- 1946)**
From Army Training, to the Phillipines
fighting, to occupation of Japan.

December 3
Mel Kahn

ELECTIONS

Friends & Food Group

Host: Virginia Murphey

August 25:
6:00 pm

China Inn

September 29:
6:00 pm

Carrabas Italian

B E
THE KIND
OF WOMAN
THAT MAKES
OTHER WOMEN WANT
TO UP THEIR GAME

How to Become a Member

Contact Patsy Selby at 838-3483 patsy.selby@@wichita.edu or Shannon Koehn at 978-3801 shannon.koehn@wichita.edu

<http://www.wichita.edu/wsuwomen>



WICHITA STATE
UNIVERSITY
WOMEN OF
WICHITA STATE UNIVERSITY

Women of Wichita State University
1845 N Fairmount Box 117
Wichita, KS 67260-0117

Adrienne McAlpine, editor
adrienne.mcalpine@wichita.edu