

# Women of Wichita State University

2020-2021 | Issue 1 | September 1, 2020

## **WELCOME to the 1st Edition of the 2020-2021 WWSU NEWSLETTER!**

We hope you have had a fun-filled and healthy summer! The WWSU Board Members have been working diligently over the summer discussing business as usual, and business as UN-usual concerning the health and safety of our members during the COVID-19 pandemic. Fall semester may look a little different in terms of traditional in-person activities but we have some fun virtual alternatives. We hope to see you virtually! This issue will contain important information, as well as some mindless fun stuff! We have a newly-elected Executive Committee this year, and some new faces on the WWSU Board to work alongside more of our long-term members. We all hope to get to know you better, and hope you have fun getting to know us!



**It's QUICK & EASY to renew**  
your WWSU Membership for 2020-2021.

### Follow the Steps Below!

1

#### **STEP 1**

Pay the \$12.00 annual membership dues.

Pay securely online by going to:

**[wichita.edu/WWSUmarketplace](http://wichita.edu/WWSUmarketplace)**

2

#### **STEP 2**

Complete the online Membership

Application by going to:

**[wichita.edu/WWSUapplication](http://wichita.edu/WWSUapplication)**

*For more information including alternative ways to renew your WWSU Membership, visit our website at [www.wichita.edu/WWSU](http://www.wichita.edu/WWSU) or email us at [WWSU@wichita.edu](mailto:WWSU@wichita.edu).*



## Angela Paul

Research and Instruction Services  
University Libraries  
Instruction and Outreach Librarian



Earlier this year, Angela Paul was elected to serve a two-year term as President of Women of Wichita State University. We asked her to share her experiences and thoughts about WWSU, specifically why she chose to join and what she enjoys best about being a member of our organization. Below is what she had to say:

"I joined the organization in 2005 specifically to join the book club. My supervisor at the time, Gwen Alexander, started the interest group then when it was part of the Women's Association, and persuaded me to help her host the club in Ablah Library. I love reading, and greatly enjoyed the opportunity to help Gwen get the club started. The club encourages me to read many types of fiction and nonfiction (although I have to admit I have a wide comfort zone) and appreciate some books more only because I am able to hear why other people love them.

I decided to run for president of WWSU because I am passionate about keeping the organization an integral part of University life. It was getting difficult to find people to serve in leadership positions, so I knew that I was needed. It is important to be connected to faculty and staff all over campus, and I want to do what I can to help WWSU find its niche in campus life. Hannah is planning some fun, virtual activities this fall to keep faculty and staff connected. I sincerely hope our efforts this semester will increase our membership and strengthen our sense of campus community."

# meet your new 1st VICE PRESIDENT

## Patsy Selby

Retired in 2016 from WSU Foundation, former VP for Finance & Administration



Patsy & John enjoyed Whale Watching this past January in Maui!

Q. Why did you chose to join WWSU?

A. I was a former member of CUW (16 years) and Women's Association (18 years) when the two organizations merged to form WWSU.

Q. What do you like best about being a member of WWSU?

A. Our mission and the social aspect, so I still see others from WSU.

Q. How long have you been a member of WWSU?

A. Since the organization began 2 years ago, but I was in CUW for 16 years and the Women's Association for 18 years prior to that.

Q. Which makes a better pet? Cats or Dogs?

A. I like dogs - we have a Yorkie Poo, KOSMO.

Q. Summer is better than winter. Agree or disagree?

A. Actually I like spring and fall here in Kansas.

Q. Do you like pineapple on your pizza?

A. I love Hawaiian pizza!

Q. Which is a better dessert? Cake or Ice Cream?

A. I actually prefer cookies.

Q. What is your favorite way to spend a day off?

A. Everyday is Saturday when you retire.

Q. What is the best vacation you ever took and why?

A. We've been to Maui twice and loved it.

Q. What was the last thing you read?

A. Walk the Wire by David Baldacci.

Q. Would you say you're more of an extrovert or introvert?

A. Depends on the setting.

Q. What was the last TV show you binge-watched?

A. The Last Dance.

Q. Do you have a favorite holiday? Why or why not?

A. Thanksgiving; the food and family.

How do you fix a broken pumpkin?

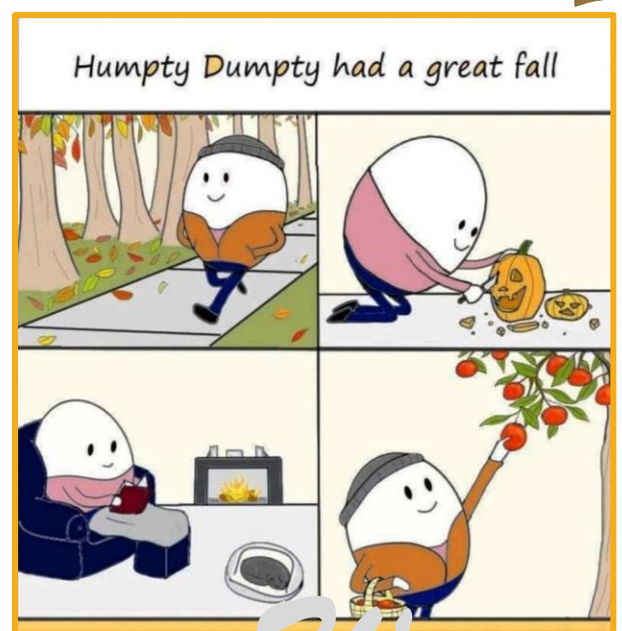


With a Pumpkin Patch!



Refer a Friend to Join  
WWSU

- Current faculty and staff, including auxiliary employees of Wichita State
- Spouses of Wichita State faculty and staff
- Retirees and WWSU members who have an active connection with Wichita State





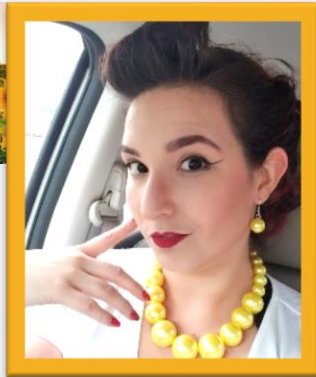
Find Us on Facebook! [facebook.com/WomenofWSU](https://facebook.com/WomenofWSU)



## meet your new 2nd VICE PRESIDENT

# Hannah Bates

Human Resources  
HR Specialist | Leave Administration



**Q.** Why did you chose to join WWSU?

**A.** I was new to Wichita and WSU, and it was an opportunity to connect and network with other women across campus.

**Q.** What do you like best about being a member of WWSU?

**A.** I've met many wonderful ladies who I wouldn't have encountered without WWSU! Book club and other interest groups is one of the best ways to meet new friends with similar interests!

**Q.** How long have you been a member of WWSU?

**A.** 2 years.

**Q.** Summer is better than winter. Agree or disagree?

**A.** Disagree! I can't stand the heat & humidity. I would much prefer to be a little too chilly and wrapped up in a blanket with hot cocoa!

**Q.** Do you like pineapple on your pizza?

**A.** I don't think I've ever tried it, but I would probably like it!

**Q.** Which is a better dessert? Cake or Ice Cream?

**A.** Is ice cream cake an option? 😊

**Q.** What is your favorite way to spend a day off?

**A.** Sleeping. It isn't a proper day off unless I get to take a nap!

**Q.** What are your hobbies, and how did you get into them?

**A.** I tend to look at things with an attitude of, "I'm pretty sure I could make that," so my hobbies are mostly maker-related. I like sewing, crocheting, embroidery, painting...anything I can get into, really!

**Q.** Would you say you're more of an extrovert or introvert?

**A.** Extrovert, no question.

**Q.** Are you into podcasts or do you only listen to music?

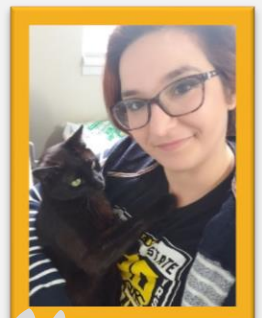
**A.** I LOVE podcasts! True crime, comedy, supernatural and horror anthologies, geeky deep-dives. My current obsessions are My Favorite Murder, The Magnus Archives, Rusty Quill Gaming, Binge Mode: Harry Potter, and almost every Wondery true crime podcast.

**Q.** Do you have a favorite holiday? Why or why not?

**A.** Pumpkin Spice Latte launch day at Starbucks, because I'm a product of my generation!

**Q.** Which makes a better pet? Cats or Dogs?

**A.** I'm definitely a cat person, because I've always lived in apartments. If you have the space for a dog to get their exercise, dogs are great, too!



## Social Events Lunch & Learn

Join us for a virtual monthly luncheon **11:30 AM-12:30 PM** via Zoom!

Each month we will watch a brief streaming video together and discussion questions over the lunch hour. Fun recipes will also be sent via email each month to go along with our topic theme!

**SEPTEMBER 30<sup>th</sup>**

◆ The Procrastination Monkey + Quick Make-Ahead Lunches

**OCTOBER 29<sup>th</sup>**

◆ Power Poses + Power Food

**NOVEMBER 24<sup>th</sup>**

◆ An Attitude of Gratitude + Local Appreciation



## Third Thursday Virtual Happy Hour

For some of us, the best times are had with friends and a glass of wine!

If you're missing your socializing time, pop into our virtual happy hour via Zoom from **7:00 PM-8:30 PM** on the **third Thursday** of every month this semester. We'll play casual games such as bingo and trivia, and just take the time to enjoy one another's company. See you there!

**SEPTEMBER 17<sup>th</sup>**

◆ Scattergories

**OCTOBER 15<sup>th</sup>**

◆ BINGO

**NOVEMBER 19<sup>th</sup>**

◆ Trivia Night



## Interest Group News

WWSU is keeping the health, safety, and wellbeing of our members in mind when planning for WWSU Interest Groups during the COVID-19 pandemic.

**Book Club** is currently meeting online via Zoom.

**All other groups** are on hiatus while Interest Group Chair Members give thought to alternative options to in-person gatherings.

MEET  
**Twyla Hill**  
Sociology Professor

WWSU Interest Group Chair & New Member Chair



How long have you been a member of WWSU?  
I don't remember exactly, but it's been at least 15 years.

Why did you choose to join WWSU?  
Several years ago, I joined both the Council of University Women and the Women's Association. I joined CUW to meet women from across campus and in different fields, so I would learn more about WWSU and be exposed to the similarities and differences across our experiences. I joined WA because of the interest groups; it helped me meet even more people in Wichita, which was helpful since I had moved here from CA.

What do you like best about being a member of WWSU?  
I like being in Book Club because it makes me read a wide variety of books and I get to hear other people's perspectives.

Summer is better than winter. Agree or disagree?  
Agree, but Fall is the best season. I love Halloween (see below).

What was the last thing you read?  
The Diary of a Bookseller and Confessions of a Bookseller by Shaun Bythell. He owns a used bookstore in Scotland. I really enjoyed both books.

Are you into podcasts or do you only listen to music?  
I am not into podcasts, although I do sometimes listen to Life Lab Notes (because a friend of mine does it). I prefer music, and still use my very old iPod.

Do you have a favorite holiday? Why or why not?  
Halloween. Black cats. Cider. Pumpkins. Pretending you are someone (or something) else for a while. It's all wonderful.

### BOOK CLUB

Angela Paul & Twyla Hill

### FRIENDS & FOOD

Jill Fisher

### GAMES & GIGGLES

*vacant position*

### LUNCH BUNCH

Phoebe Garcia & Shannon Koehn

### NEW MEMBERS

Twyla Hill

### THEATRE

Jill Fisher

### WSU TREASURES

Charlotte Kleffner

INTEREST  
GROUP  
CHAIR  
MEMBERS



## HELP WANTED

### GAMES & GIGGLES

### Interest Group

### CHAIRWOMAN!



Would you like to roll the dice and become the next Chair or WWSU's Games & Giggles Interest Group? Email [WWSU@wichita.edu](mailto:WWSU@wichita.edu)



## Interest Group Ideas

We're interested in your ideas! Do you have an idea for a new interest group? Virtual group ideas? We want to hear them! Send them to:

[WWSU@wichita.edu](mailto:WWSU@wichita.edu)





## FUN FACT

Shaking hands upon greeting was originally adopted several centuries ago in England as a means of establishing that neither party was armed.



# Happy Retirement, Julie Scherz!

Fellow WWSU Member, Julie Scherz, Chairman and Associate Professor of Communications Sciences & Disorders retired this summer.

*We wish you a well-deserved enjoyable retirement, Julie!*



## Did You Know...

### The WWSU Courtesy Chair:

- Sends Get Well Cards to any member who is ill or hospitalized.
- Sends a Baby Card to any member upon the birth or adoption of a baby.
- Sends Sympathy Cards upon the death of a member, spouse, and immediate family member.
- Purchases a children's book to be placed in WSU's Ablah Library in honor of WSU faculty/staff who is a member at her retirement.

*If you know of any WWSU member who fits the criteria above, please let us know!*

Email us at:

**WWSU@wichita.edu**

## MEET Darlene Dinkel

Information Technology Services, Report Developer  
WWSU Courtesy Chair



How long have you been a member of WWSU?  
It's probably close to 20 years.

Why did you choose to join WWSU?

I had previously been a member of CUW and wanted to continue being in an organization that raises money for scholarships.

What do you like best about being a member of WWSU?  
The Interest Groups.

Which makes a better pet? Cats or Dogs?

I like both cats and dogs. Currently, I have a dog, Maddox, who is an Italian Greyhound/Miniature Poodle mix. Before Maddox, I had a cat.

Summer is better than winter. Agree or Disagree?  
Summer is definitely better.

Do you like pineapple on your pizza?

It depends on what other items are on the pizza. I like it if it's a Hawaiian style pizza.

Which is a better dessert? Cake or Ice Cream?  
Ice Cream.

What is your favorite way to spend a day off?  
Reading a book.

What are your hobbies?  
Reading

What was the last thing you read?  
Currently, I'm reading The President's House by Margaret Truman.

What was the last TV show you binge-watched?  
Downton Abbey

Are you into podcasts or do you only listen to music?  
Just listen to music.

Do you have a favorite holiday? Why or why not?  
Easter since it's not so commercialized.

BEHIND EVERY  
SUCCESSFUL *woman*  
IS A TRIBE OF OTHER  
*successful* WOMEN,  
WHO HAVE *her back*.



Facebook.com/FowlLanguageComics



FowlLanguageComics.com

©Brian Gordon

**WWSU Scholarship**  
**UPDATE**

The Scholarship Committee awarded scholarships to four non-traditional and very deserving students this year.

**Congratulations**  
to **Rhonda Smith,**  
**Krista Ward, Latisha**  
**Davis, and Dawna**  
**Raehpour!**



WWSU Donations are made through the WSU Foundation, which is a 501(c)3 non-profit organization and all donations are tax-deductible.

**WWSU Scholarship**  
**DONATIONS**

**HOW TO DONATE to the WWSU Scholarship Fund:**

1. Go to the WSU Foundation webpage: [foundation.wichita.edu/give](http://foundation.wichita.edu/give)
2. Select **Search**.
3. Search for: **Women of WSU Scholarship/Fellowship**
4. Select/enter your donation amount.

MEET  
**Shannon Koehn**

WSU Foundation, Director of Prospect Research  
**WWSU Scholarship Chair & Lunch Brunch Co-Chair**



I have been at Wichita State for almost 25 years, having worked at the Alumni Association for 10 ½ years and now at the foundation for just over 14.

I have been a part of CUW and Women’s Association for a long time, having served in the past on both boards and president of CUW for 3 years. I continue to be a part of WWSU because I feel it is important for the women of Wichita State (both current and retired) to have an avenue to talk and empower each other. I also feel strongly in our purpose to provide scholarships for women who are still searching for their place in life. I joined CUW to get to know other women on campus when I needed that network. I stay a member to help others.

PS. I totally love pineapple on my pizza (so does my dog). Just finished binge-watching Shameless with my husband. Our time off is spent at the lake – I am an August baby who loves summer!





# Sandy's Ooey-Gooey Pumpkin Spice Muffins

## Ingredients:

- 1 box Spice Cake mix (I like Duncan Hines)
- 1 bag cinnamon chips (there may be other brands, but I always get Hersey's)
- 1 can pumpkin (not pumpkin pie filling; just straight pumpkin)
- ½ cup of water
- Paper muffin cups
- Cream Cheese Frosting (optional)

## Directions:

Set the oven to 350. Mix all ingredients together in a large mixing bowl. Place muffin cups in muffin tins and scoop filling into each cup. Bake for 15 to 18 minutes (I always do it at 15 because I like them gooey). Let cool and enjoy! Top it off with some cream cheese frosting for a little something extra!

Yields 12 to 15 muffins



## MEET Sandy Parker

Human Resources, Training Coordinator  
WWSU Newsletter Chair & Publicity Chair



**How long have you been a member of WWSU?**  
I'm going on 2 years. However, I had been interested in joining when I started at the University in 2014, I just didn't have enough information at the time to make the leap. That's why I feel it's so important to spread the word about our organization!

**Why did you choose to join WWSU?**

One of my co-worker besties joined, and she talked about it all the time! She sent a personalized message to her female co-workers expressing why she thought we would enjoy joining as well. I finally made the leap and have never looked back!

**What do you like best about being a member of WWSU?**

Getting to know the other members! Everyone is so amazing, fun, and inspiring! I'm hoping maybe that will all rub off on me. 😊

**Which makes a better pet? Cats or Dogs?**

I'm honestly more of a cat person, but I love dogs, too! (I'm actually allergic to both!) I have two lil' littermate puffers, named Sugar & Munchie.

**Summer is better than winter. Agree or disagree?**

Agree. While I love fall/winter festivities, I'm highly annoyed at having to wear socks, shoes, coats, etc. every time I have to go outside.

**What is your favorite way to spend a day off?**

If I had my way, I would spend my days off sleeping, eating, and shopping! I'd also enjoy a day alone in bed binge-watching a good show.

**What is the best vacation you ever took and why?**

I was fortunate to be able to go to Maui in 2010, and I hope to someday go back! I left a piece of my heart there. It's my home away from home. My happy place...

**What was the last thing you read?**

In full? (Or at least not a children's book read to my 2-year-old or 5-year-old?) Strengths-Based Leadership: Great Leaders, Teams, and Why People Follow. Strengths is my jam! I love talking about it and could all day! My Top 5 Strengths are Empathy, Connectedness, Intellection, Positivity, and Maximizer.

**Would you say you're more of an extrovert or introvert?**

Some people are surprised by this but I'm definitely 100% introvert.



Come see what's new on our website!

[wichita.edu/WWSU](http://wichita.edu/WWSU)

## meet your new **SECRETARY**



# Anne Marie Brown

School of Music  
Administrative Officer

Q. How long have you been a member of WWSU?

A. One year.

Q. Why did you choose to join WWSU?

A. I enjoy meeting new people and providing help to students.

Q. Which makes a better pet? Cats or Dogs?

A. Cats, we have 3!

Q. Do you like pineapple on your pizza?

A. No way!

Q. Which is a better dessert? Cake or Ice Cream?

A. Both?

Q. What is your favorite way to spend a day off?

A. Reading.

Q. What type of music are you into?

A. A variety, maybe not country.

Q. What is the best vacation you ever took and why?

A. Hawaii, spent time alone with my husband. No interruptions, timelines, freedom.

Q. What are your hobbies, and how did you get into them?

A. Quilting....just fell into it many years ago. And, then work and my son got in the way...so the past 14 years I have not been able to quilt. Stop, the pandemic, time on my hands.....having so much fun quilting again!

## Questions? Comments? Suggestions?



Send us an Email!

[WWSU@wichita.edu](mailto:WWSU@wichita.edu)

# 2020-2021 WWSU BOARD MEMBERS

## EXECUTIVE COMMITTEE

### PRESIDENT

Angie Paul

### 1<sup>st</sup> VICE PRESIDENT

Patsy Selby

### 2<sup>nd</sup> VICE PRESIDENT

Hannah Bates

### SECRETARY

Anne Marie Brown

### TREASURER

Adrienne McAlpine

## APPOINTED OFFICERS

### AUDITOR CHAIR

*vacant position*

### COURTESY CHAIR

Darlene Dinkel

### FUNDRAISER CHAIR

Marchè Fleming-Randle

### INTEREST GROUPS CHAIR

Twyla Hill

### NEW MEMBERS CHAIR

Twyla Hill

### NEWSLETTER CHAIR

Sandy Parker

### PUBLICITY CHAIR

Sandy Parker

### SCHOLARSHIP CHAIR

Shannon Koehn