

HOLMES HAPPENINGS

Official Newsletter of
Lowell D. Holmes Museum of Anthropology

SPRING BRINGS NEW EXHIBITS

Spring brings flowers, sunshine and warmer weather but it also brings new exhibits! We have several new exhibits that will be highlighted in this newsletter. You will get a chance to view them in the exhibits opening on Tuesday April 26th from 2:00-5:00.



NEW PUBLICATION

The Pizza Hut Museum committee members comprised of Sue Abdinnour, Rachele Meinecke, Lisa Parcell and Jay Price, wrote an article entitled **"Serving up a Slice of Entrepreneurship on Campus: The New Pizza Hut Museum"**. This article has been published in the current issue of *"The Public Historian"* and describes the up and down journey of creating a new museum.

You can find the article by looking up the following link:

<https://doi.org/10.1525/tph.2022.44.1.51>

THIS ISSUE:

Spring Brings New Exhibits and a New Publication

PAGE 1

Accessibility in Museums

PAGE 2

New Exhibits Around Campus

PAGE 3

Meet the Staff

PAGE 4

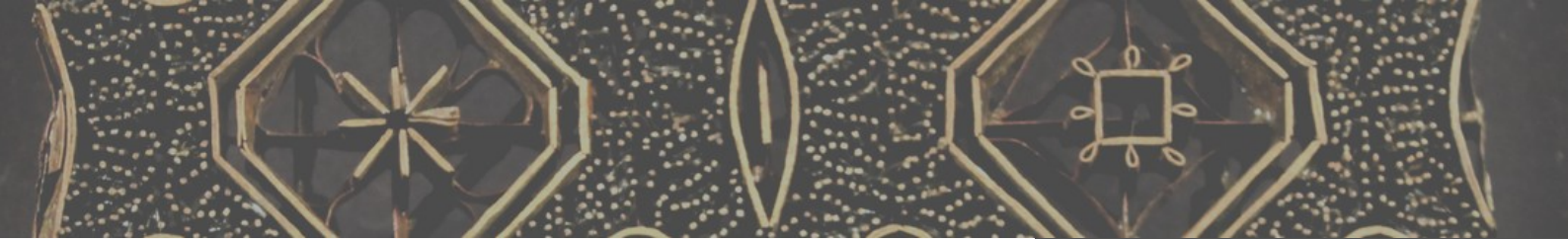
Contact Information

PAGE 5



WICHITA STATE
UNIVERSITY
FAIRMOUNT COLLEGE OF
LIBERAL ARTS AND SCIENCES

Lowell D. Holmes Museum
of Anthropology



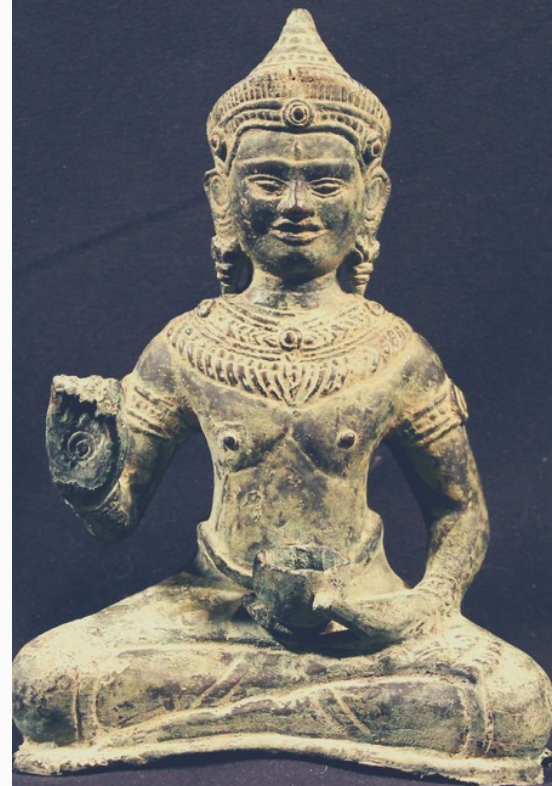
ACCESSIBILITY IN MUSEUMS

In the past few years Wichita State has made a commitment to be more accessible to vision impaired students. The Holmes Museum of Anthropology is also making the commitment to better serve our vision impaired visitors in two distinct ways. One of the steps we are taking is to include QR codes in our exhibits so visitors with smart phones can have the information read to them using their devices. This initial step is the result of a Master's Project by graduate student Gracie Tolley. Gracie has worked in the museum since her Sophomore year at WSU and will complete her Master's degree in Anthropology and Museum Studies Certificate this spring. Throughout her time working in the museum, making museums accessible for all visitors has been an interest for her. Her research and project will help us be more compliant with our focus of providing more accessibility. The other project we will begin soon is the digitization of our collection. The photos and text will be uploaded to our website in a format that will be accessible to those with vision impairments. This will also allow our collection to be viewed from anywhere in the world for education, research and enjoyment.



"IT'S NOT A MUSEUM. IT'S NOT A PLACE OF ARTIFACTS; IT'S A PLACE OF IDEAS."

JEANIE KAHNKE



"A PEOPLE WITHOUT KNOWLEDGE OF THEIR PAST HISTORY, ORIGIN AND CULTURE ARE LIKE A TREE WITHOUT ROOTS"

MARCUS GARVEY



SPRING EXHIBIT OPENING

The spring exhibits opening will be a come and go event on Tuesday, April 26th from 2:00-5:00. Featured exhibits will be from the Spring 2022 Exhibition Class, Gracie Tolley's MA project about accessibility for low vision visitors, the Etzanoa traveling exhibit and a photography exhibit about Chinese Minorities.

"The Many Faces of China"

Photograph Exhibit



"Etzanoa"

Traveling Exhibit



"The Power of Ritual Objects"

Museum staff members graduate student, Ria Morgan and Junior Angie Guevara created two new exhibits in the Rhatigan Student Center. Morgan's exhibit is entitled "*Shall We Dance*" and Guevara's exhibit is entitled "*Till Death Do Us Part*".



MEET THE STAFF

Gracie Tolley - Registrar & GTA

Gracie is a second year graduate student and a Wichita native. Her graduate research interest is in making museums more accessible for low vision visitors. She is actively involved in the department through Lambda Alpha, the Anthropology Honor Society. She also has a vast knowledge of pop culture and audiobooks.



Ria Morgan - Curator

Ria is obsessed with textiles! They love weaving, spinning, dyeing, felting, and many other fiber arts techniques. Got a question on textile production? Need to know what kind of pattern a textile is sporting? Want to see a spinning wheel in action? Ria's your person!



Angie Guevara - Curator

Angie is a Texas native interested in cultural and medical anthropology who's excited to kick off her third year at WSU by working on new exhibits and making new friends within the Anthropology department. She is a book fiend who loves to read but rarely has any time, and has also heavily integrated podcasts into her daily life. Want recommendations? Ask Angie!





MUSEUM AND EDITORIAL TEAM

MUSEUM DIRECTOR

Rachelle Meinecke

MUSEUM REGISTRAR

Gracie Tolley

CURATOR OF COLLECTIONS

A. Ria Morgan

CURATOR OF EXHIBITS

Angie Guevara

NEWSLETTER DESIGNER

A. Ria Morgan

CONTACT INFORMATION

QUESTIONS? COMMENTS? CONCERNS?

holmes.museum@wichita.edu
316-978-7068

Museum Studies Certificate Information
www.wichita.edu/holmesmuseum

1845 Fairmount St., Box 52
Wichita, KS 67260-0052

LOCATION

NEFF HALL

First floor, with exhibits throughout the building

HOURS

1 PM - 5 PM, MONDAY THROUGH FRIDAY

or by appointment

LOWELL D. HOLMES



MUSEUM OF ANTHROPOLOGY



HOLMES HAPPENINGS