

Degrees Conferred Factbook

This file contains summary data at the university, college division and student level for degrees conferred by academic year¹.

Table 1: Wichita State University Degree Productivity

Table 2: Wichita State University Degree Productivity by Semester

Table 3: University Level Demographics by Degree Type

Table 4: Degree Production by College Division

Table 5: Degree Production by Departmental Unit by College Division

¹ Academic year (AY) is comprised of a fall-spring-summer sequence.

Table 1: Wichita State University Degree Productivity

Degree type:	Academic Year (Fall, Spring, Summer awards)									diff		percentage change				
	1980	1990	2000	2010	2020	2021	2022	2023	2024	2023 to 2024	15.2%	1980 to 2024	1990 to 2024	2000 to 2024	2010 to 2024	2020 to 2024
Total	1,968	2,249	2,433	2,969	3,466	3,733	3,644	3,957	4,558	601	15.2%	131.6%	102.7%	87.3%	53.5%	31.5%
Doctoral	6	14	27	67	115	93	86	117	114	-3	-2.6%	1800.0%	714.3%	322.2%	70.1%	-0.9%
Post Masters ¹	29	11	5	5	15	19	16	11	12	1	9.1%	-58.6%	9.1%	140.0%	140.0%	-20.0%
Masters	486	505	763	767	677	763	812	1,220	1,476	256	21.0%	203.7%	192.3%	93.4%	92.4%	118.0%
Bachelors	1,290	1,510	1,489	1,988	2,372	2,489	2,315	2,167	2,269	102	4.7%	75.9%	50.3%	52.4%	14.1%	-4.3%
Associates	116	182	146	75	82	98	69	53	207	154	290.6%	78.4%	13.7%	41.8%	176.0%	152.4%
Certificates	41	27	3	67	205	271	346	389	480	91	23.4%	1070.7%	1677.8%	15900.0%	616.4%	134.1%
Total w/o certificates	1,927	2,222	2,430	2,902	3,261	3,462	3,298	3,568	4,078	510	14.3%	111.6%	83.5%	67.8%	40.5%	25.1%

¹ Post Masters includes the Specialist in Education (SPED)

Degrees Awarded by Academic Year (fall-spring-summer sequence)

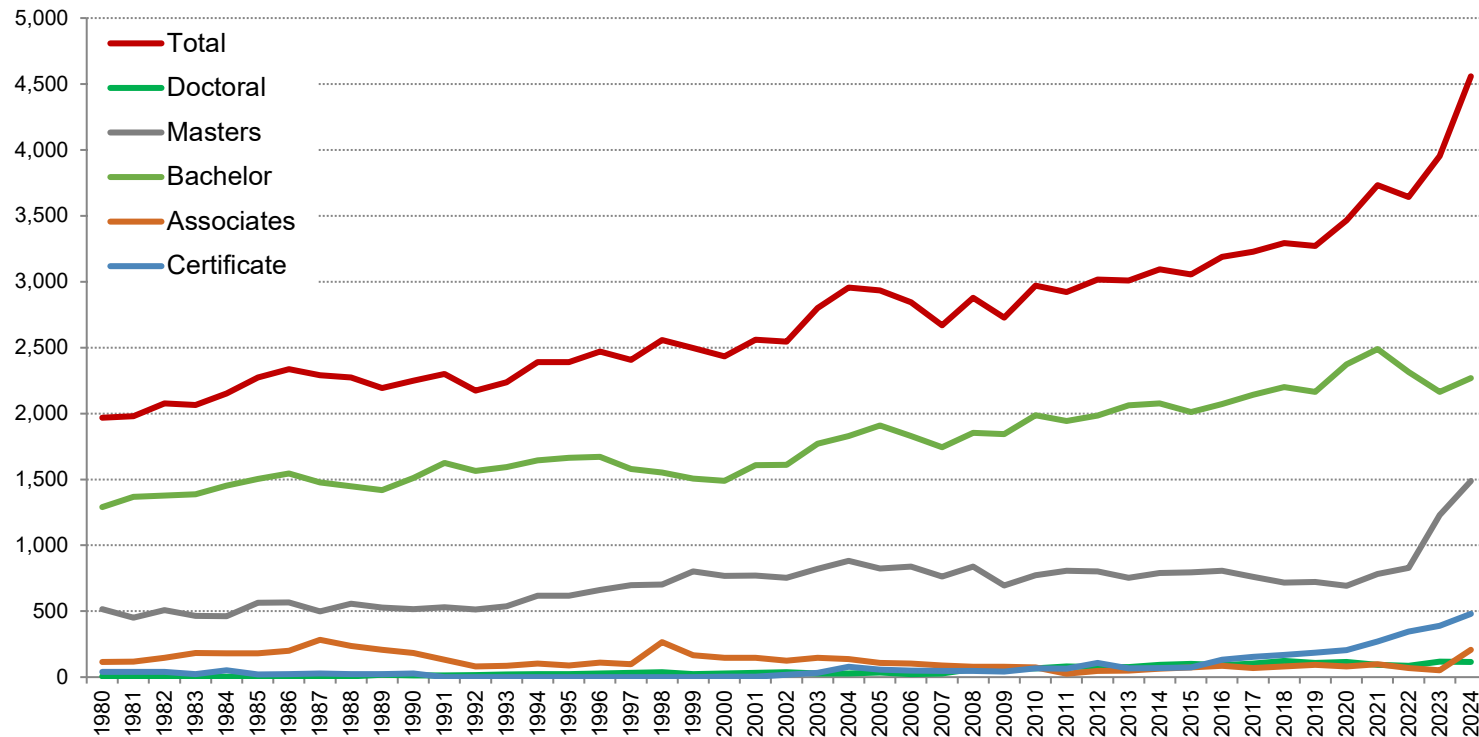


Table 2: Wichita State University Degree Productivity by Semester

Degree type:	Academic Year (Fall, Spring, Summer awards)										diff		percentage change				
	1980	1990	2000	2010	2020	2021	2022	2023	2024	2023 to 2024	2023 to 2024	1980 to 2024	1990 to 2024	2000 to 2024	2010 to 2024	2020 to 2024	
Total	1,968	2,249	2,433	2,969	3,466	3,733	3,644	3,957	4,558	601	15.2%	131.6%	102.7%	87.3%	53.5%	31.5%	
Fall	545	720	697	882	1,035	1,110	1,127	1,192	1,385	193	16.2%	154.1%	92.4%	98.7%	57.0%	33.8%	
Spring	989	1,049	1,213	1,667	2,018	2,174	2,076	2,294	2,648	354	15.4%	167.7%	152.4%	118.3%	58.8%	31.2%	
Summer	434	480	523	420	413	449	441	471	525	54	11.5%	21.0%	9.4%	0.4%	25.0%	27.1%	
Total	100%	100%	100%	100%	100%	100%	100%	100%	100%	change in percent							
Fall	27.7%	32.0%	28.6%	29.7%	29.9%	29.7%	30.9%	30.1%	30.4%	0.3%	2.7%	-1.6%	1.7%	0.7%	0.7%		
Spring	50.3%	46.6%	49.9%	56.1%	58.2%	58.2%	57.0%	58.0%	58.1%	0.1%	7.8%	11.5%	8.2%	1.9%	-0.1%		
Summer	22.1%	21.3%	21.5%	14.1%	11.9%	12.0%	12.1%	11.9%	11.5%	-0.4%	-10.5%	-9.8%	-10.0%	-2.6%	-0.5%		

FALL ONLY:

Degree type:	Academic Year (Fall, Spring, Summer awards)										diff		percentage change				
	1980	1990	2000	2010	2020	2021	2022	2023	2024	2023 to 2024	2023 to 2024	1980 to 2024	1990 to 2024	2000 to 2024	2010 to 2024	2020 to 2024	
Total	545	720	697	882	1,035	1,110	1,127	1,192	1,385	193	16.2%	154.1%	92.4%	98.7%	57.0%	33.8%	
Doctoral	2	3	4	15	33	16	20	35	37	2	5.7%	1750.0%	1133.3%	825.0%	146.7%	12.1%	
Post Masters	8	1	1	3	9	3	4	2	5	3	150.0%	-37.5%	400.0%	400.0%	66.7%	-44.4%	
Masters	137	142	199	181	156	186	224	312	420	108	34.6%	206.6%	195.8%	111.1%	132.0%	169.2%	
Bachelors	360	520	462	648	760	808	771	733	701	-32	-4.4%	94.7%	34.8%	51.7%	8.2%	-7.8%	
Associates	38	53	31	15	35	24	31	24	97	73	304.2%	155.3%	83.0%	212.9%	546.7%	177.1%	
Certificates	0	1	0	20	42	73	77	86	125	39	45.3%	n/a	12400.0%	n/a	525.0%	197.6%	

¹ Post Masters includes the Specialist in Education (SPED)

SPRING ONLY:

Degree type:	Academic Year (Fall, Spring, Summer awards)										diff		percentage change				
	1980	1990	2000	2010	2020	2021	2022	2023	2024	2023 to 2024	2023 to 2024	1980 to 2024	1990 to 2024	2000 to 2024	2010 to 2024	2020 to 2024	
Total	989	1,049	1,213	1,667	2,018	2,174	2,076	2,294	2,648	354	15.4%	167.7%	152.4%	118.3%	58.8%	31.2%	
Doctoral	4	7	18	45	69	65	56	68	68	0	0.0%	1600.0%	871.4%	277.8%	51.1%	-1.4%	
Post Masters	6	8	4	2	6	15	12	9	7	-2	-22.2%	16.7%	-12.5%	75.0%	250.0%	16.7%	
Masters	186	233	361	430	405	447	429	717	905	188	26.2%	386.6%	288.4%	150.7%	110.5%	123.5%	
Bachelors	727	698	759	1,107	1,367	1,427	1,331	1,226	1,296	70	5.7%	78.3%	85.7%	70.8%	17.1%	-5.2%	
Associates	53	103	71	53	38	63	31	24	86	62	258.3%	62.3%	-16.5%	21.1%	62.3%	126.3%	
Certificates	13	0	0	30	133	157	217	250	286	36	14.4%	2100.0%	n/a	n/a	853.3%	115.0%	

¹ Post Masters includes the Specialist in Education (SPED)

SUMMER ONLY:

Degree type:	Academic Year (Fall, Spring, Summer awards)										diff		percentage change				
	1980	1990	2000	2010	2020	2021	2022	2023	2024	2023 to 2024	2023 to 2024	1980 to 2024	1990 to 2024	2000 to 2024	2010 to 2024	2020 to 2024	
Total	434	480	523	420	413	449	441	471	525	54	11.5%	21.0%	9.4%	0.4%	25.0%	27.1%	
Doctoral	0	4	5	7	13	12	10	14	9	-5	-35.7%	n/a	125.0%	80.0%	28.6%	-30.8%	
Post Masters	15	2	0	0	0	1	0	0	0	0	n/a	-100.0%	-100.0%	n/a	n/a	n/a	
Masters	163	130	203	156	116	130	159	191	151	-40	-20.9%	-7.4%	16.2%	-25.6%	-3.2%	30.2%	
Bachelors	203	292	268	233	245	254	213	208	272	64	30.8%	34.0%	-6.8%	1.5%	16.7%	11.0%	
Associates	25	26	44	7	9	11	7	5	24	19	380.0%	-4.0%	-7.7%	-45.5%	242.9%	166.7%	
Certificates	28	26	3	17	30	41	52	53	69	16	30.2%	146.4%	165.4%	2200.0%	305.9%	130.0%	

Table 3: University Level Demographics by Degree Type

Selected Demographics:	Academic Year (Fall, Spring, Summer awards)										diff		percentage change				
	1980	1990	2000	2010	2020	2021	2022	2023	2024	2023 to 2024	1980 to 2024	1990 to 2024	2000 to 2024	2010 to 2024	2020 to 2024		
Student age in years:																	
Total	mean	28.0	29.0	29.0	28.0	27.0	27.0	27.0	27.0	27.0	0	0.0%	-3.6%	-6.9%	-6.9%	-3.6%	0.0%
	median	25.0	26.0	26.0	25.0	24.0	24.0	24.0	24.0	24.0	0	0.0%	-4.0%	-7.7%	-7.7%	-4.0%	0.0%
Doctoral	mean	35.0	33.0	37.0	32.0	32.0	31.0	31.0	32.0	33.0	1	3.1%	-5.7%	0.0%	-10.8%	3.1%	3.1%
	median	32.0	32.0	36.0	30.0	30.0	28.0	29.0	30.0	29.0	-1	-3.3%	-9.4%	-9.4%	-19.4%	-3.3%	-3.3%
Post Masters	mean	38.0	37.0	39.0	36.0	34.0	32.0	29.0	29.0	29.0	0	0.0%	-23.7%	-21.6%	-25.6%	-19.4%	-14.7%
	median	38.0	40.0	33.0	33.0	33.0	27.0	27.0	26.0	26.0	0	0.0%	-31.6%	-35.0%	-21.2%	-21.2%	-21.2%
Masters	mean	32.0	33.0	32.0	31.0	30.0	29.0	30.0	28.0	28.0	0	0.0%	-12.5%	-15.2%	-12.5%	-9.7%	-6.7%
	median	30.0	31.0	29.0	28.0	27.0	27.0	25.0	25.0	25.0	0	0.0%	-16.7%	-19.4%	-13.8%	-10.7%	-7.4%
Bachelors	mean	26.0	28.0	28.0	27.0	26.0	26.0	26.0	25.0	25.0	0	0.0%	-3.8%	-10.7%	-10.7%	-7.4%	-3.8%
	median	23.0	25.0	25.0	24.0	23.0	23.0	23.0	23.0	23.0	0	0.0%	0.0%	-8.0%	-8.0%	-4.2%	0.0%
Associates	mean	28.0	30.0	28.0	28.0	29.0	26.0	27.0	25.0	22.0	-3	-12.0%	-21.4%	-26.7%	-21.4%	-21.4%	-24.1%
	median	25.0	28.0	26.0	24.0	24.0	23.0	24.0	23.0	20.0	-3	-13.0%	-20.0%	-28.6%	-23.1%	-16.7%	-16.7%
Certificates	mean	32.0	30.0	49.0	31.0	29.0	30.0	29.0	29.0	29.0	0	0.0%	-9.4%	-3.3%	-40.8%	-6.5%	0.0%
	median	31.0	28.0	49.0	28.0	26.0	27.0	25.0	26.0	25.0	-1	-3.8%	-19.4%	-10.7%	-49.0%	-10.7%	-3.8%
Percent female:																	
	Total	51.3%	54.1%	59.4%	57.6%	57.6%	58.8%	58.3%	55.5%	55.1%	-0.4%	3.8%	1.0%	-4.3%	-2.5%	-2.5%	
	Doctoral	16.7%	7.1%	44.4%	65.7%	55.7%	53.8%	70.9%	53.0%	59.7%	6.7%	43.0%	52.5%	15.2%	-6.0%	4.0%	
	Post Masters	62.1%	72.7%	60.0%	80.0%	86.7%	84.2%	87.5%	81.8%	83.3%	1.5%	21.3%	10.6%	23.3%	3.3%	-3.3%	
	Masters	56.2%	52.7%	54.3%	55.4%	55.2%	56.9%	61.6%	49.6%	46.6%	-3.0%	-9.6%	-6.1%	-7.7%	-8.8%	-8.6%	
	Bachelors	47.7%	52.3%	60.7%	57.7%	58.3%	59.1%	57.5%	59.3%	61.0%	1.7%	13.4%	8.8%	0.3%	3.3%	2.8%	
	Associates	69.8%	74.2%	74.7%	78.7%	62.2%	79.6%	72.5%	75.5%	69.6%	-5.9%	-0.3%	-4.6%	-5.1%	-9.1%	7.4%	
	Certificates	51.2%	63.0%	100.0%	46.3%	54.6%	53.9%	49.1%	49.6%	45.0%	-4.6%	-6.2%	-18.0%	-55.0%	-1.3%	-9.6%	
Percent under-represented minority¹																	
	Total	6.1%	5.5%	7.9%	10.2%	15.9%	15.9%	16.8%	14.3%	15.1%	0.8%	9.0%	-5.5%	-7.1%	5.0%	-0.7%	
	Doctoral	0.0%	0.0%	3.7%	9.0%	12.2%	16.1%	11.6%	10.3%	10.5%	0.3%	10.5%	0.0%	-3.4%	1.6%	-1.6%	
	Masters	6.6%	4.6%	4.1%	6.4%	13.9%	11.4%	12.2%	7.4%	7.5%	0.1%	0.9%	-4.6%	-3.9%	1.1%	-6.4%	
	Bachelors	6.2%	5.2%	9.3%	11.3%	16.4%	17.3%	19.0%	18.5%	19.3%	0.8%	13.1%	-5.2%	-8.5%	7.9%	2.8%	
	Associates	6.0%	11.0%	14.4%	17.3%	28.1%	30.6%	33.3%	34.0%	31.4%	-2.6%	25.4%	-11.0%	-16.9%	14.1%	3.4%	
	Certificates	0.0%	0.0%	33.3%	11.9%	12.7%	10.0%	11.0%	11.3%	12.9%	1.6%	12.9%	0.0%	-31.7%	1.0%	0.2%	

¹ Under-represented minority includes Black non-Hispanic, Hispanic, American Indian/Alaskan Native and Native Hawaiian/Other Pacific Islander

Table 3: University Level Demographics by Degree Type (Con't)

Selected Demographics:	Academic Year (Fall, Spring, Summer awards)									diff 2023 to 2024	change in percent					
	1980	1990	2000	2010	2020	2021	2022	2023	2024		1980 to 2024	1990 to 2024	2000 to 2024	2010 to 2024	2020 to 2024	
Percent first generation student:																
Total	n/a	n/a	24.2%	27.9%	35.8%	37.4%	39.2%	35.6%	31.7%	-3.8%	n/a	n/a	11.4%	3.9%	-4.0%	
Doctoral	n/a	n/a	0.0%	16.4%	13.0%	10.8%	19.8%	14.5%	24.6%	10.0%	n/a	n/a	14.5%	8.1%	11.5%	
Masters	n/a	n/a	5.5%	14.0%	18.9%	22.2%	23.9%	17.9%	15.1%	-2.8%	n/a	n/a	12.4%	1.2%	-3.8%	
Bachelors	n/a	n/a	33.4%	33.4%	42.0%	44.0%	46.2%	46.4%	42.3%	-4.1%	n/a	n/a	13.0%	8.9%	0.3%	
Associates	n/a	n/a	32.9%	42.7%	61.0%	64.3%	53.6%	60.4%	49.8%	-10.6%	n/a	n/a	27.5%	7.1%	-11.2%	
Certificates	n/a	n/a	0.0%	17.9%	22.0%	19.2%	30.6%	33.4%	26.9%	-6.5%	n/a	n/a	33.4%	9.0%	4.9%	
Residency status:																
change in percent																
Doctoral	Total	100%	100%	100%	100%	100%	100%	100%	100%	100%						
	Resident	50.0%	14.3%	29.6%	73.1%	65.2%	65.6%	64.0%	59.0%	60.5%	1.5%	10.5%	46.2%	30.9%	-12.6%	-4.7%
	Non-resident	50.0%	21.4%	22.2%	6.0%	13.0%	15.1%	16.3%	14.5%	23.7%	9.2%	-26.3%	2.3%	1.5%	17.7%	10.7%
	International	0.0%	64.3%	48.1%	20.9%	21.7%	19.4%	19.8%	26.5%	15.8%	-10.7%	15.8%	-48.5%	-32.3%	-5.1%	-5.9%
Masters	Total	100%	100%	100%	100%	100%	100%	100%	100%	100%						
	Resident	76.3%	72.1%	66.2%	66.9%	63.8%	63.7%	60.3%	39.3%	30.4%	-8.9%	-45.9%	-41.7%	-35.8%	-36.5%	-33.4%
	Non-resident	18.1%	12.1%	13.2%	12.1%	16.2%	14.2%	16.5%	9.8%	8.8%	-1.0%	-9.3%	-3.3%	-4.4%	-3.3%	-7.4%
	International	5.6%	15.8%	20.6%	21.0%	19.9%	22.1%	23.2%	51.0%	60.8%	9.8%	55.2%	45.0%	40.2%	39.8%	40.9%
Bachelors	Total	100%	100%	100%	100%	100%	100%	100%	100%	100%						
	Resident	89.1%	86.2%	85.6%	88.1%	83.1%	81.9%	82.1%	81.4%	82.3%	0.9%	-6.8%	-3.9%	-3.3%	-5.8%	-0.8%
	Non-resident	8.9%	7.0%	6.2%	4.2%	9.7%	10.6%	12.4%	13.3%	13.5%	0.2%	4.6%	6.5%	7.3%	9.3%	3.8%
	International	2.0%	6.8%	8.3%	7.7%	7.2%	7.5%	5.6%	5.3%	4.2%	-1.1%	2.2%	-2.6%	-4.1%	-3.5%	-3.0%
Associates	Total	100%	100%	100%	100%	100%	100%	100%	100%	100%						
	Resident	91.4%	91.2%	91.1%	97.3%	89.0%	91.8%	89.9%	88.7%	83.1%	-5.6%	-8.3%	-8.1%	-8.0%	-14.2%	-5.9%
	Non-resident	6.9%	6.6%	7.5%	2.7%	7.3%	5.1%	8.7%	7.5%	14.0%	6.5%	7.1%	7.4%	6.5%	11.3%	6.7%
	International	1.7%	2.2%	1.4%	0.0%	3.7%	3.1%	1.4%	3.8%	2.9%	-0.9%	1.2%	0.7%	1.5%	2.9%	-0.8%
Certificates	Total	100%	100%	100%	100%	100%	100%	100%	100%	100%						
	Resident	58.5%	81.5%	100.0%	62.7%	64.4%	58.3%	61.8%	59.4%	51.9%	-7.5%	-6.6%	-29.6%	-48.1%	-10.8%	-12.5%
	Non-resident	41.5%	18.5%	0.0%	11.9%	7.8%	14.0%	18.8%	13.1%	17.5%	4.4%	-24.0%	-1.0%	17.5%	5.6%	9.7%
	International	0.0%	0.0%	0.0%	25.4%	27.8%	27.7%	19.4%	27.5%	30.6%	3.1%	30.6%	30.6%	30.6%	5.2%	2.8%

Table 4: Degree Production by College Division

College Division / Degree type:		Academic Year (Fall, Spring, Summer awards)									diff		percentage change					
		1980	1990	2000	2010	2020	2021	2022	2023	2024	2023 to 2024		1980 to 2024	1990 to 2024	2000 to 2024	2010 to 2024	2020 to 2024	
Business	Total	362	551	466	592	578	640	592	647	686	39	6.0%	89.5%	24.5%	47.2%	15.9%	18.7%	
	Masters	45	69	126	124	112	141	151	201	210	9	4.5%	366.7%	204.3%	66.7%	69.4%	87.5%	
	Bachelors	290	438	319	468	454	464	415	413	425	12	2.9%	46.6%	-3.0%	33.2%	-9.2%	-6.4%	
	Associates	27	44	21	0	0	0	0	0	0	0	n/a	-100.0%	-100.0%	-100.0%	n/a	n/a	
	Certificates	0	0	0	0	12	35	26	33	51	18	54.5%	n/a	n/a	n/a	n/a	n/a	325.0%
Applied Studies	Total	341	313	420	463	577	708	689	632	686	54	8.5%	101.2%	119.2%	63.3%	48.2%	18.9%	
	Doctoral	0	0	3	6	7	9	4	6	13	7	116.7%	n/a	n/a	333.3%	116.7%	85.7%	
	Post Masters	29	11	5	5	15	19	16	11	12	1	9.1%	-58.6%	9.1%	140.0%	140.0%	-20.0%	
	Masters	162	138	223	156	121	152	153	161	156	-5	-3.1%	-3.7%	13.0%	-30.0%	0.0%	28.9%	
	Bachelors	150	164	189	296	410	477	460	389	433	44	11.3%	188.7%	164.0%	129.1%	46.3%	5.6%	
	Certificates	0	0	0	0	24	51	56	65	72	7	10.8%	n/a	n/a	n/a	n/a	200.0%	
Engineering	Total	136	312	329	379	608	666	724	1,094	1,394	300	27.4%	925.0%	346.8%	323.7%	267.8%	129.3%	
	Doctoral	1	12	10	10	19	13	12	26	14	-12	-46.2%	1300.0%	16.7%	40.0%	40.0%	-26.3%	
	Masters	22	76	142	156	141	161	173	550	795	245	44.5%	3513.6%	946.1%	459.9%	409.6%	463.8%	
	Bachelors	113	224	177	195	375	417	391	359	347	-12	-3.3%	207.1%	54.9%	96.0%	77.9%	-7.5%	
	Certificates	0	0	0	18	73	75	148	159	238	79	49.7%	n/a	n/a	n/a	1222.2%	226.0%	
Fine Arts	Total	152	105	91	135	145	202	197	196	229	33	16.8%	50.7%	118.1%	151.6%	69.6%	57.9%	
	Masters	49	35	30	28	31	37	40	31	41	10	32.3%	-16.3%	17.1%	36.7%	46.4%	32.3%	
	Bachelors	103	70	61	104	111	142	141	132	161	29	22.0%	56.3%	130.0%	163.9%	54.8%	45.0%	
	Certificates	0	0	0	3	3	23	16	33	27	-6	-18.2%	n/a	n/a	n/a	800.0%	800.0%	
Health Professions	Total	410	302	361	430	567	524	506	483	516	33	6.8%	25.9%	70.9%	42.9%	20.0%	-9.0%	
	Doctoral	3	1	5	38	69	56	59	70	70	0	0.0%	2233.3%	6900.0%	1300.0%	84.2%	1.4%	
	Masters	77	61	102	95	105	92	105	100	97	-3	-3.0%	26.0%	59.0%	-4.9%	2.1%	-7.6%	
	Bachelors	249	175	200	250	378	367	330	302	335	33	10.9%	34.5%	91.4%	67.5%	34.0%	-11.4%	
	Associates	40	38	51	34	0	0	0	0	0	0	n/a	-100.0%	-100.0%	-100.0%	-100.0%	n/a	
	Certificates	41	27	3	13	15	9	12	11	14	3	27.3%	-65.9%	-48.1%	366.7%	7.7%	-6.7%	

Table 4: Degree Production by College Division (Con't)

College Division / Degree type:	Academic Year (Fall, Spring, Summer awards)										diff		percentage change				
	1980	1990	2000	2010	2020	2021	2022	2023	2024	2023 to 2024	2023 to 2024	1980 to 2024	1990 to 2024	2000 to 2024	2010 to 2024	2020 to 2024	
LAS Humanities																	
Total	66	83	139	143	99	91	83	103	94	-9	-8.7%	42.4%	-110.8%	-32.4%	-34.3%	-5.1%	
Masters	13	33	31	39	21	15	25	24	25	1	4.2%	92.3%	-97.0%	-19.4%	-35.9%	19.0%	
Bachelors	53	50	108	102	68	67	51	63	54	-9	-14.3%	1.9%	-118.0%	-50.0%	-47.1%	-20.6%	
Certificates	0	0	0	2	10	9	7	16	15	-1	-6.3%	n/a	n/a	n/a	650.0%	50.0%	
LAS Natural Sci. & Math																	
Total	90	64	101	114	136	148	138	146	156	10	6.8%	73.3%	-84.4%	54.5%	36.8%	14.7%	
Doctoral	2	1	5	6	8	6	1	10	6	-4	-40.0%	200.0%	-500.0%	20.0%	0.0%	-25.0%	
Masters	17	23	19	14	20	32	27	19	26	7	36.8%	52.9%	-69.6%	36.8%	85.7%	30.0%	
Bachelors	71	40	77	94	108	108	105	107	119	12	11.2%	67.6%	-70.0%	54.5%	26.6%	10.2%	
Certificates	0	0	0	0	0	2	5	10	5	-5	-50.0%	n/a	n/a	n/a	n/a	n/a	
LAS Social Sciences																	
Total	380	419	452	671	652	648	622	592	576	-16	-2.7%	51.6%	-103.8%	27.4%	-14.2%	-11.7%	
Doctoral	0	0	4	7	12	9	10	5	11	6	120.0%	n/a	n/a	175.0%	57.1%	-8.3%	
Masters	101	70	90	155	116	129	129	129	121	-8	-6.2%	19.8%	-111.4%	34.4%	-21.9%	4.3%	
Bachelors	261	349	358	479	464	444	417	400	395	-5	-1.3%	51.3%	-101.4%	10.3%	-17.5%	-14.9%	
Associates	18	0	0	0	0	0	0	0	0	0	n/a	-100.0%	n/a	n/a	n/a	n/a	
Certificates	0	0	0	30	60	66	66	58	49	-9	-15.5%	n/a	n/a	n/a	63.3%	-18.3%	
LAS Other*																	
Total	31	100	74	42	89	99	75	57	216	159	278.9%	596.8%	59.0%	191.9%	414.3%	142.7%	
Associates	31	100	74	41	82	98	69	53	207	154	290.6%	567.7%	54.0%	179.7%	404.9%	152.4%	
Certificates	0	0	0	1	7	1	6	4	9	5	125.0%	n/a	n/a	n/a	800.0%	28.6%	
Honors/IIC																	
Total	0	0	0	0	15	7	18	7	5	-2	-28.6%	n/a	n/a	n/a	n/a	-66.7%	
Masters	0	0	0	0	10	4	9	5	5	0	0.0%	n/a	n/a	n/a	n/a	-50.0%	
Bachelors	0	0	0	0	4	3	5	2	0	-2	-100.0%	n/a	n/a	n/a	n/a	-100.0%	
Certificates	0	0	0	0	1	0	4	0	0	0	n/a	n/a	n/a	n/a	n/a	-100.0%	

* LAS Other includes multi-disciplinary degrees, bachelor and associate degrees not affiliated with a department.

Table 5: Degree Production by Departmental Unit by College Division

College Div/Dept Unit/Degree type:	Academic Year (Fall, Spring, Summer awards)										diff		percentage change				
	1980	1990	2000	2010	2020	2021	2022	2023	2024	2023 to 2024		1980 to 2024	1990 to 2024	2000 to 2024	2010 to 2024	2020 to 2024	
College of Business:																	
100101 Accounting	Total	107	111	65	139	97	94	100	93	92	-1	-1.1%	-14.0%	-17.1%	41.5%	-33.8%	-5.2%
	Masters	3	10	15	23	11	17	11	17	16	-1	-5.9%	433.3%	60.0%	6.7%	-30.4%	45.5%
	Bachelor	104	101	50	116	86	77	89	76	76	0	0.0%	-26.9%	-24.8%	52.0%	-34.5%	-11.6%
100201 Economics	Total	11	10	16	23	27	27	18	22	32	10	45.5%	190.9%	220.0%	100.0%	39.1%	18.5%
	Masters	4	6	12	12	9	10	9	6	10	4	66.7%	150.0%	66.7%	-16.7%	-16.7%	11.1%
	Bachelor	7	4	4	11	18	17	9	16	22	6	37.5%	214.3%	450.0%	450.0%	100.0%	22.2%
100301 Finance	Total	16	59	49	78	73	58	65	69	60	-9	-13.0%	275.0%	1.7%	22.4%	-23.1%	-17.8%
	Bachelor	16	59	49	78	73	58	65	69	57	-12	-17.4%	256.3%	-3.4%	16.3%	-26.9%	-21.9%
	Certificate	0	0	0	0	0	0	0	0	3	3	n/a	n/a	n/a	n/a	n/a	n/a
100303 Supply Chain Management	Total	0	0	0	0	21	26	25	45	43	-2	-4.4%	n/a	n/a	n/a	n/a	104.8%
	Masters	0	0	0	0	11	15	17	35	33	-2	-5.7%	n/a	n/a	n/a	n/a	200.0%
	Certificate	0	0	0	0	10	11	8	10	10	0	0.0%	n/a	n/a	n/a	n/a	0.0%
100305 Mgmt Info Sys	Total	0	0	16	24	24	25	22	38	30	-8	-21.1%	n/a	n/a	87.5%	25.0%	25.0%
	Bachelor	0	0	16	24	24	25	22	38	30	-8	-21.1%	n/a	n/a	87.5%	25.0%	25.0%
100306 Business Analytics	Total	0	0	0	0	1	6	4	32	62	30	93.8%	n/a	n/a	n/a	n/a	6100.0%
	Masters	0	0	0	0	0	0	1	25	54	29	116.0%	n/a	n/a	n/a	n/a	n/a
	Certificate	0	0	0	0	1	6	3	7	8	1	14.3%	n/a	n/a	n/a	n/a	700.0%
100401 Management	Total	11	63	35	44	75	76	73	59	48	-11	-18.6%	336.4%	-23.8%	37.1%	9.1%	-36.0%
	Masters	2	1	3	0	0	0	0	0	0	0	n/a	-100.0%	-100.0%	-100.0%	n/a	n/a
	Bachelor	9	62	32	44	75	76	73	59	48	-11	-18.6%	433.3%	-22.6%	50.0%	9.1%	-36.0%
100402 International Business	Total	0	14	14	17	15	20	6	16	9	-7	-43.8%	n/a	-35.7%	-35.7%	-47.1%	-40.0%
	Bachelor	0	14	14	17	15	20	6	16	9	-7	-43.8%	n/a	-35.7%	-35.7%	-47.1%	-40.0%
100403 Human Res Mgmt	Total	20	12	18	18	40	73	74	73	82	9	12.3%	310.0%	583.3%	355.6%	355.6%	105.0%
	Masters	0	0	0	0	0	20	33	33	27	-6	-18.2%	n/a	n/a	n/a	n/a	n/a
	Bachelor	20	12	18	18	40	41	29	28	31	3	10.7%	55.0%	158.3%	72.2%	72.2%	-22.5%
	Certificate	0	0	0	0	0	12	12	12	24	12	100.0%	n/a	n/a	n/a	n/a	n/a
100404 Entrepreneurship	Total	0	0	6	24	7	20	15	12	11	-1	-8.3%	n/a	n/a	83.3%	-54.2%	57.1%
	Bachelor	0	0	6	24	7	20	15	11	10	-1	-9.1%	n/a	n/a	66.7%	-58.3%	42.9%
	Certificate	0	0	0	0	0	0	0	1	1	0	0.0%	n/a	n/a	n/a	n/a	n/a
100501 Marketing	Total	33	91	72	58	72	59	65	50	63	13	26.0%	90.9%	-30.8%	-12.5%	8.6%	-12.5%
	Bachelor	33	91	72	58	72	59	65	50	63	13	26.0%	90.9%	-30.8%	-12.5%	8.6%	-12.5%
100601 Business Adm	Total	98	94	58	78	44	71	42	50	79	29	58.0%	-19.4%	-16.0%	36.2%	1.3%	79.5%
	Bachelor	98	94	58	78	44	71	42	50	79	29	58.0%	-19.4%	-16.0%	36.2%	1.3%	79.5%
100602 Bus Adm MBA	Total	36	52	83	64	82	73	83	88	75	-13	-14.8%	108.3%	44.2%	-9.6%	17.2%	-8.5%
	Masters	36	52	83	64	81	67	80	85	70	-15	-17.6%	94.4%	34.6%	-15.7%	9.4%	-13.6%
	Certificate	0	0	0	0	1	6	3	3	5	2	66.7%	n/a	n/a	n/a	n/a	400.0%
100603 Bus Adm EMBA	Total	0	0	13	25	0	12	0	0	0	0	n/a	n/a	n/a	-100.0%	-100.0%	n/a
	Masters	0	0	13	25	0	12	0	0	0	0	n/a	n/a	n/a	-100.0%	-100.0%	n/a
109901 Business Other	Total	30	45	21	0	0	0	0	0	0	0	n/a	-100.0%	-100.0%	n/a	n/a	n/a
	Bachelor	3	1	0	0	0	0	0	0	0	0	n/a	-100.0%	-100.0%	-100.0%	n/a	n/a
	Associates	27	44	21	0	0	0	0	0	0	0	n/a	n/a	n/a	n/a	n/a	n/a

Table 5: Degree Production by Departmental Unit by College Division

College Div/Dept Unit/Degree type:	Academic Year (Fall, Spring, Summer awards)										diff		percentage change				
	1980	1990	2000	2010	2020	2021	2022	2023	2024	2023 to 2024	2023 to 2024	1980 to 2024	1990 to 2024	2000 to 2024	2010 to 2024	2020 to 2024	
College of Applied Studies:																	
200101 Counseling	Total	32	36	14	24	27	62	79	87	80	-7	-8.0%	150.0%	122.2%	471.4%	233.3%	196.3%
	Spec Post MA	3	7	0	0	0	0	0	0	0	0	n/a	-100.0%	-100.0%	n/a	n/a	n/a
	Masters	29	29	14	24	22	39	50	50	51	1	2.0%	75.9%	75.9%	264.3%	112.5%	131.8%
	Certificate	0	0	0	0	5	23	29	37	29	-8	-21.6%	n/a	n/a	n/a	n/a	480.0%
200102 Educ Psych	Total	33	28	6	7	4	12	3	13	8	-5	-38.5%	-75.8%	-71.4%	33.3%	14.3%	100.0%
	Masters	33	28	6	7	4	12	3	13	8	-5	-38.5%	-75.8%	-71.4%	33.3%	14.3%	100.0%
200103 Sch Psych	Total	0	0	5	5	15	19	16	11	12	1	9.1%	n/a	n/a	140.0%	140.0%	-20.0%
	Spec Post MA	0	0	5	5	15	19	16	11	12	1	9.1%	n/a	n/a	140.0%	140.0%	-20.0%
200104 Educ Leadership	Total	59	28	31	22	29	33	21	22	38	16	72.7%	-35.6%	35.7%	22.6%	72.7%	31.0%
	Doctoral	0	0	3	6	7	9	4	6	13	7	116.7%	n/a	n/a	333.3%	116.7%	85.7%
	Spec Post MA	26	4	0	0	0	0	0	0	0	0	n/a	-100.0%	-100.0%	n/a	n/a	n/a
	Masters	33	24	28	16	7	3	3	1	0	-1	-100.0%	-100.0%	-100.0%	-100.0%	-100.0%	-100.0%
	Certificate	0	0	0	0	15	21	14	15	25	10	66.7%	n/a	n/a	n/a	n/a	66.7%
200201 Curriculum & Instruct	Total	203	209	262	259	133	127	128	122	96	-26	-21.3%	-52.7%	-54.1%	-63.4%	-62.9%	-27.8%
	Masters	53	45	120	50	10	9	6	13	9	-4	-30.8%	-83.0%	-80.0%	-92.5%	-82.0%	-10.0%
	Bachelor	150	164	142	209	119	116	118	102	80	-22	-21.6%	-46.7%	-51.2%	-43.7%	-61.7%	-32.8%
	Certificate	0	0	0	0	4	2	4	7	7	0	0.0%	n/a	n/a	n/a	n/a	75.0%
200203 Master Arts Teaching	Total	0	0	0	5	7	11	9	6	6	0	0.0%	n/a	n/a	n/a	20.0%	-14.3%
	Masters	0	0	0	5	7	11	9	6	6	0	0.0%	n/a	n/a	n/a	20.0%	-14.3%
200301 Special Education	Total	0	0	19	12	21	33	58	49	58	9	18.4%	n/a	n/a	205.3%	383.3%	176.2%
	Masters	0	0	19	12	21	33	56	49	57	8	16.3%	n/a	n/a	200.0%	375.0%	171.4%
	Certificate	0	0	0	0	0	0	2	0	1	1	n/a	n/a	n/a	n/a	n/a	n/a
200302 Teacher Apprentice Program	Total	0	0	0	0	146	228	216	181	219	38	21.0%	n/a	n/a	n/a	n/a	50.0%
	Bachelor	0	0	0	0	146	228	216	181	219	38	21.0%	n/a	n/a	n/a	n/a	50.0%
200401 Human Performance Studies	Total	14	12	43	59	106	90	84	81	86	5	6.2%	514.3%	616.7%	100.0%	45.8%	-18.9%
	Masters	14	12	5	12	16	8	7	12	4	-8	-66.7%	-71.4%	-66.7%	-20.0%	-66.7%	-75.0%
	Bachelor	0	0	38	47	90	77	70	64	72	8	12.5%	n/a	n/a	89.5%	53.2%	-20.0%
	Certificate	0	0	0	0	0	5	7	5	10	5	100.0%	n/a	n/a	n/a	n/a	n/a
200501 Sport Management	Total	0	0	40	70	88	88	66	51	67	16	31.4%	n/a	n/a	67.5%	-4.3%	-23.9%
	Masters	0	0	31	30	34	37	19	17	21	4	23.5%	n/a	n/a	-32.3%	-30.0%	-38.2%
	Bachelor	0	0	9	40	54	51	47	33	46	13	39.4%	n/a	n/a	411.1%	15.0%	-14.8%
	Certificate	0	0	0	0	0	0	0	1	0	-1	-100.0%	n/a	n/a	n/a	n/a	n/a
200502 Leadership Management	Total	0	0	0	0	1	5	9	9	16	7	77.8%	n/a	n/a	n/a	n/a	1500.0%
	Bachelor	0	0	0	0	1	5	9	9	16	7	77.8%	n/a	n/a	n/a	n/a	1500.0%

Table 5: Degree Production by Departmental Unit by College Division

College Div/Dept Unit/Degree type:	Academic Year (Fall, Spring, Summer awards)										diff		percentage change				
	1980	1990	2000	2010	2020	2021	2022	2023	2024	2023 to 2024		1980 to 2024	1990 to 2024	2000 to 2024	2010 to 2024	2020 to 2024	
College of Engineering:																	
300101 Aerospace Eng	Total	18	55	48	57	90	86	77	65	68	3	4.6%	277.8%	23.6%	41.7%	19.3%	-24.4%
	Doctoral	1	2	5	1	3	0	0	5	1	-4	-80.0%	0.0%	-50.0%	-80.0%	0.0%	-66.7%
	Masters	4	23	17	12	21	17	9	10	10	0	0.0%	150.0%	-56.5%	-41.2%	-16.7%	-52.4%
	Bachelor	13	30	26	44	66	69	68	50	57	7	14.0%	338.5%	90.0%	119.2%	29.5%	-13.6%
300201 Electrical Eng	Total	43	119	96	119	49	43	47	79	95	16	20.3%	120.9%	-20.2%	-1.0%	-20.2%	93.9%
	Doctoral	0	3	3	3	5	5	4	8	5	-3	-37.5%	n/a	66.7%	66.7%	66.7%	0.0%
	Masters	6	16	51	68	10	6	12	34	39	5	14.7%	550.0%	143.8%	-23.5%	-42.6%	290.0%
	Bachelor	37	100	42	48	34	32	31	37	32	-5	-13.5%	-13.5%	-68.0%	-23.8%	-33.3%	-5.9%
	Certificate	0	0	0	0	0	0	0	0	19	19	n/a	n/a	n/a	n/a	n/a	n/a
300202 Computer Eng	Total	0	0	10	10	22	24	23	11	19	8	72.7%	n/a	n/a	90.0%	90.0%	-13.6%
	Bachelor	0	0	10	10	22	24	23	11	19	8	72.7%	n/a	n/a	90.0%	90.0%	-13.6%
300301 Industrial Engineering	Total	10	38	44	62	139	147	121	165	173	8	4.8%	1630.0%	355.3%	293.2%	179.0%	24.5%
	Doctoral	0	4	1	1	5	3	4	7	6	-1	-14.3%	n/a	50.0%	500.0%	500.0%	20.0%
	Masters	5	20	32	32	43	47	40	53	60	7	13.2%	1100.0%	200.0%	87.5%	87.5%	39.5%
	Bachelor	5	14	11	12	26	32	27	36	24	-12	-33.3%	380.0%	71.4%	118.2%	100.0%	-7.7%
	Certificate	0	0	0	17	65	65	50	69	83	14	20.3%	n/a	n/a	n/a	388.2%	27.7%
300302 Manufactur Engineer	Total	1	0	0	2	13	5	10	8	15	7	87.5%	1400.0%	n/a	n/a	650.0%	15.4%
	Bachelor	1	0	0	2	13	5	10	8	15	7	87.5%	1400.0%	n/a	n/a	650.0%	15.4%
300303 Engineering Management	Total	1	0	0	5	7	10	21	15	32	17	113.3%	3100.0%	n/a	n/a	540.0%	357.1%
	Masters	0	0	0	5	7	10	21	15	32	17	113.3%	n/a	n/a	n/a	540.0%	357.1%
	Bachelor	1	0	0	0	0	0	0	0	0	0	n/a	-100.0%	n/a	n/a	n/a	n/a
300401 Mechanical Engineer	Total	36	42	61	87	118	106	105	91	71	-20	-22.0%	97.2%	69.0%	16.4%	-18.4%	-39.8%
	Doctoral	0	3	1	5	6	5	4	6	2	-4	-66.7%	n/a	-33.3%	100.0%	-60.0%	-66.7%
	Masters	7	10	19	21	20	15	20	9	14	5	55.6%	100.0%	40.0%	-26.3%	-33.3%	-30.0%
	Bachelor	29	29	41	61	92	86	80	76	55	-21	-27.6%	89.7%	89.7%	34.1%	-9.8%	-40.2%
	Certificate	0	0	0	0	0	0	1	0	0	0	n/a	n/a	n/a	n/a	n/a	n/a
300501 Biomedical Engineering	Total	0	0	0	0	49	69	45	38	37	-1	-2.6%	n/a	n/a	n/a	n/a	-24.5%
	Masters	0	0	0	0	9	2	9	4	7	3	75.0%	n/a	n/a	n/a	n/a	-22.2%
	Bachelor	0	0	0	0	40	63	34	32	24	-8	-25.0%	n/a	n/a	n/a	n/a	-40.0%
	Certificate	0	0	0	0	0	4	2	2	6	4	200.0%	n/a	n/a	n/a	n/a	n/a
300601 Applied Engineering	Total	1	0	0	0	37	27	38	33	36	3	9.1%	3500.0%	n/a	n/a	n/a	-2.7%
	Bachelor	1	0	0	0	37	27	26	26	20	-6	-23.1%	1900.0%	n/a	n/a	n/a	n/a
	Certificate	0	0	0	0	0	0	12	7	16	9	128.6%	n/a	n/a	n/a	n/a	n/a
300701 Computing	Total	0	0	0	1	13	15	106	139	130	-9	-6.5%	n/a	n/a	n/a	12900.0%	900.0%
	Masters	0	0	0	1	7	15	6	71	47	-24	-33.8%	n/a	n/a	n/a	4600.0%	571.4%
	Bachelor	0	0	0	0	0	0	23	15	22	7	46.7%	n/a	n/a	n/a	n/a	n/a
	Certificate	0	0	0	0	6	0	77	53	61	8	15.1%	n/a	n/a	n/a	n/a	916.7%
300702 Computer Science	Total	19	57	70	35	71	134	131	399	571	172	43.1%	2905.3%	901.8%	715.7%	1531.4%	704.2%
	Masters	0	7	23	17	24	49	56	303	439	136	44.9%	n/a	6171.4%	1808.7%	2482.4%	1729.2%
	Bachelor	19	50	47	18	45	79	69	68	79	11	16.2%	315.8%	58.0%	68.1%	338.9%	75.6%
	Certificate	0	0	0	0	2	6	6	28	53	25	89.3%	n/a	n/a	n/a	n/a	2550.0%
300703 Data Science	Total	0	0	0	0	0	0	51	146	146	95	186.3%	n/a	n/a	n/a	n/a	n/a
	Masters	0	0	0	0	0	0	51	146	146	95	186.3%	n/a	n/a	n/a	n/a	n/a
309901 Engineering Other	Total	7	1	0	1	0	0	0	0	1	1	n/a	-85.7%	0.0%	n/a	0.0%	n/a
	Masters	0	0	0	0	0	0	0	0	1	1	n/a	n/a	n/a	n/a	n/a	n/a
	Bachelor	7	1	0	0	0	0	0	0	0	0	n/a	-100.0%	-100.0%	n/a	n/a	n/a
	Certificate	0	0	0	1	0	0	0	0	0	0	n/a	n/a	n/a	n/a	-100.0%	n/a

Table 5: Degree Production by Departmental Unit by College Division

College Div/Dept Unit/Degree type:	Academic Year (Fall, Spring, Summer awards)										diff		percentage change				
	1980	1990	2000	2010	2020	2021	2022	2023	2024	2023 to 2024		1980 to 2024	1990 to 2024	2000 to 2024	2010 to 2024	2020 to 2024	
College of Fine Arts:																	
400101 Studio Art	Total	16	16	13	26	20	20	14	18	18	0	0.0%	12.5%	12.5%	38.5%	-30.8%	-10.0%
	Masters	8	8	4	4	2	3	5	1	6	5	500.0%	-25.0%	-25.0%	50.0%	50.0%	200.0%
	Bachelor	8	8	9	19	18	17	9	17	12	-5	-29.4%	50.0%	50.0%	33.3%	-36.8%	-33.3%
	Certificate	0	0	0	3	0	0	0	0	0	0	n/a	n/a	n/a	n/a	-100.0%	n/a
400102 Art Education	Total	6	4	4	6	4	2	8	5	6	1	20.0%	0.0%	50.0%	50.0%	0.0%	50.0%
	Masters	5	0	1	0	0	0	0	0	0	0	n/a	-100.0%	n/a	-100.0%	n/a	n/a
	Bachelor	1	4	3	6	4	2	8	5	6	1	20.0%	500.0%	50.0%	100.0%	0.0%	50.0%
400103 Graphic Design	Total	8	17	13	13	22	24	16	17	24	7	41.2%	200.0%	41.2%	84.6%	84.6%	9.1%
	Bachelor	8	17	13	13	22	24	16	17	24	7	41.2%	200.0%	41.2%	84.6%	84.6%	9.1%
400104 Art History	Total	2	1	2	4	2	1	2	2	1	-1	-50.0%	-50.0%	0.0%	-50.0%	-75.0%	-50.0%
	Bachelor	2	1	2	4	2	1	2	2	1	-1	-50.0%	-50.0%	0.0%	-50.0%	-75.0%	-50.0%
400201 Music Education	Total	35	31	17	31	20	31	24	21	34	13	61.9%	-2.9%	9.7%	100.0%	9.7%	70.0%
	Masters	13	16	5	9	8	13	9	5	10	5	100.0%	-23.1%	-37.5%	100.0%	11.1%	25.0%
	Bachelor	22	15	12	22	11	10	13	10	17	7	70.0%	-22.7%	13.3%	41.7%	-22.7%	54.5%
	Certificate	0	0	0	0	1	8	2	6	7	1	16.7%	n/a	n/a	n/a	n/a	600.0%
400202 Music History Theory & Comp	Total	2	2	6	1	0	0	1	0	1	1	n/a	-50.0%	-50.0%	-83.3%	0.0%	n/a
	Masters	2	2	5	1	0	0	0	0	0	0	n/a	-100.0%	-100.0%	-100.0%	-100.0%	n/a
	Bachelor	0	0	1	0	0	0	1	0	1	1	n/a	n/a	n/a	0.0%	n/a	n/a
400203 Music Performance	Total	61	31	27	33	28	25	29	36	29	-7	-19.4%	-52.5%	-6.5%	7.4%	-12.1%	3.6%
	Masters	21	9	15	14	20	12	17	20	13	-7	-35.0%	-38.1%	44.4%	-13.3%	-7.1%	-35.0%
	Bachelor	40	22	12	19	8	13	11	15	15	0	0.0%	-62.5%	-31.8%	25.0%	-21.1%	87.5%
	Certificate	0	0	0	0	0	0	1	1	1	0	0.0%	n/a	n/a	n/a	n/a	n/a
400299 Music Other	Total	0	0	0	1	4	3	1	5	6	1	20.0%	n/a	n/a	n/a	500.0%	50.0%
	Bachelor	0	0	0	1	4	3	1	5	6	1	20.0%	n/a	n/a	n/a	500.0%	50.0%
400301 Performing Arts	Total	1	3	9	20	25	37	35	25	38	13	52.0%	3700.0%	1166.7%	322.2%	90.0%	52.0%
	Bachelor	1	3	9	20	24	35	29	18	30	12	66.7%	2900.0%	900.0%	233.3%	50.0%	25.0%
	Certificate	0	0	0	0	1	2	6	7	8	1	14.3%	n/a	n/a	n/a	n/a	700.0%
400401 Digital Arts	Total	0	0	0	0	19	50	58	62	60	-2	-3.2%	n/a	n/a	n/a	n/a	215.8%
	Bachelor	0	0	0	0	18	37	51	43	49	6	14.0%	n/a	n/a	n/a	n/a	172.2%
	Certificate	0	0	0	0	1	13	7	19	11	-8	-42.1%	n/a	n/a	n/a	n/a	1000.0%
400501 Fine Arts Multi Disciplinary	Total	0	0	0	0	1	9	9	5	12	7	140.0%	n/a	n/a	n/a	n/a	1100.0%
	Masters	0	0	0	0	1	9	9	5	12	7	140.0%	n/a	n/a	n/a	n/a	1100.0%
409901 Fine Arts Other	Total	21	0	0	0	0	0	0	0	0	0	n/a	-100.0%	n/a	n/a	n/a	n/a
	Bachelor	21	0	0	0	0	0	0	0	0	0	n/a	-100.0%	n/a	n/a	n/a	n/a

Table 5: Degree Production by Departmental Unit by College Division

College Div/Dept Unit/Degree type:	Academic Year (Fall, Spring, Summer awards)										diff		percentage change				
	1980	1990	2000	2010	2020	2021	2022	2023	2024	2023 to 2024	1980 to 2024	1990 to 2024	2000 to 2024	2010 to 2024	2020 to 2024		
College of Health Professions:																	
500101 Comm Sci & Dis	Total	53	27	60	52	75	59	63	60	49	-11	-18.3%	-7.5%	81.5%	-18.3%	-5.8%	-34.7%
	Doctoral	3	1	5	1	2	0	2	1	0	-1	-100.0%	-100.0%	-100.0%	-100.0%	-100.0%	-100.0%
	Masters	28	15	31	18	34	25	30	28	23	-5	-17.9%	-17.9%	53.3%	-25.8%	27.8%	-32.4%
	Bachelor	22	11	24	28	39	34	31	31	26	-5	-16.1%	18.2%	136.4%	8.3%	-7.1%	-33.3%
	Certificate	0	0	0	5	0	0	0	0	0	0	n/a	n/a	n/a	n/a	-100.0%	n/a
500102 Audiology	Total	0	0	0	2	5	8	7	8	5	-3	-37.5%	n/a	n/a	n/a	150.0%	0.0%
	Doctoral	0	0	0	2	5	8	7	8	5	-3	-37.5%	n/a	n/a	n/a	150.0%	0.0%
500201 Dental Hygiene	Total	51	28	31	53	61	59	58	57	56	-1	-1.8%	9.8%	100.0%	80.6%	5.7%	-8.2%
	Bachelor	27	0	0	19	61	59	58	57	56	-1	-1.8%	107.4%	n/a	n/a	194.7%	-8.2%
	Associates	24	28	31	34	0	0	0	0	0	0	n/a	-100.0%	-100.0%	-100.0%	-100.0%	n/a
500301 Health Science	Total	0	51	7	3	72	51	51	51	68	17	33.3%	n/a	33.3%	871.4%	2166.7%	-5.6%
	Masters	0	0	6	0	0	0	0	0	0	0	n/a	n/a	n/a	-100.0%	n/a	n/a
	Bachelor	0	51	1	2	63	47	45	46	63	17	37.0%	n/a	23.5%	6200.0%	3050.0%	0.0%
	Certificate	0	0	0	1	9	4	6	5	5	0	0.0%	n/a	n/a	n/a	400.0%	-44.4%
500302 Health Management	Total	16	34	40	24	40	32	40	39	54	15	38.5%	237.5%	58.8%	35.0%	125.0%	35.0%
	Masters	0	20	0	0	5	9	11	15	15	0	0.0%	n/a	-25.0%	n/a	n/a	200.0%
	Bachelor	16	14	40	24	35	23	29	24	34	10	41.7%	112.5%	142.9%	-15.0%	41.7%	-2.9%
	Certificate	0	0	0	0	0	0	0	0	5							
500303 Aging Studies	Total	6	12	0	4	19	12	16	8	13	5	62.5%	116.7%	8.3%	n/a	225.0%	-31.6%
	Masters	1	5	0	4	19	12	16	6	13	7	116.7%	1200.0%	160.0%	n/a	225.0%	-31.6%
	Bachelor	5	7	0	0	0	0	0	0	0	0	n/a	-100.0%	-100.0%	n/a	n/a	n/a
	Certificate	0	0	0	0	0	0	0	2	0	-2	-100.0%	n/a	n/a	n/a	n/a	n/a
500401 Medical Laboratory Sci	Total	24	14	7	26	29	28	19	19	21	2	10.5%	-12.5%	50.0%	200.0%	-19.2%	-27.6%
	Bachelor	24	14	7	26	29	28	19	19	21	2	10.5%	-12.5%	50.0%	200.0%	-19.2%	-27.6%
500501 Nursing	Total	180	78	117	186	175	186	164	148	161	13	8.8%	-10.6%	106.4%	37.6%	-13.4%	-8.0%
	Doctoral	0	0	0	3	23	8	12	19	24	5	26.3%	n/a	n/a	n/a	700.0%	4.3%
	Masters	48	21	34	32	1	2	4	4	2	-2	-50.0%	-95.8%	-90.5%	-94.1%	-93.8%	100.0%
	Bachelor	111	57	80	151	151	176	148	125	135	10	8.0%	21.6%	136.8%	68.8%	-10.6%	-10.6%
	Certificate	21	0	3	0	0	0	0	0	0	0	n/a	-100.0%	n/a	-100.0%	n/a	n/a
500601 Physical Therapy	Total	15	21	51	32	39	40	38	42	41	-1	-2.4%	173.3%	95.2%	-19.6%	28.1%	5.1%
	Doctoral	0	0	0	32	39	40	38	42	41	-1	-2.4%	n/a	n/a	n/a	28.1%	5.1%
	Masters	0	0	31	0	0	0	0	0	0	0	n/a	n/a	n/a	-100.0%	n/a	n/a
	Bachelor	15	21	0	0	0	0	0	0	0	0	n/a	-100.0%	-100.0%	n/a	n/a	n/a
	Associates	0	0	20	0	0	0	0	0	0	0	n/a	n/a	n/a	-100.0%	n/a	n/a
500701 Physician Associate	Total	43	27	48	41	46	44	44	47	44	-3	-6.4%	2.3%	63.0%	-8.3%	7.3%	-4.3%
	Masters	0	0	0	41	46	44	44	47	44	-3	-6.4%	n/a	n/a	n/a	7.3%	-4.3%
	Bachelor	23	0	48	0	0	0	0	0	0	0	n/a	-100.0%	n/a	-100.0%	n/a	n/a
	Certificate	20	27	0	0	0	0	0	0	0	0	n/a	-100.0%	-100.0%	n/a	n/a	n/a
509901 Hlth Prof Other	Total	22	10	0	7	6	5	6	4	4	0	0.0%	-81.8%	-60.0%	n/a	-42.9%	-33.3%
	Bachelor	6	0	0	0	0	0	0	0	0	0	n/a	-100.0%	n/a	n/a	n/a	n/a
	Associates	16	10	0	0	0	0	0	0	0	0	n/a	-100.0%	-100.0%	n/a	n/a	n/a
	Certificate	0	0	0	7	6	5	6	4	4	0	0.0%	n/a	n/a	n/a	-42.9%	-33.3%

Table 5: Degree Production by Departmental Unit by College Division

College Div/Dept Unit/Degree type:	Academic Year (Fall, Spring, Summer awards)										diff		percentage change				
	1980	1990	2000	2010	2020	2021	2022	2023	2024	2023 to 2024	1980 to 2024	1990 to 2024	2000 to 2024	2010 to 2024	2020 to 2024		
College of LAS Humanities:																	
610101 English	Total	22	23	32	30	26	26	25	21	28	7	33.3%	27.3%	21.7%	-12.5%	-6.7%	7.7%
	Masters	5	9	5	10	4	6	8	9	8	-1	-11.1%	60.0%	-11.1%	60.0%	-20.0%	100.0%
	Bachelor	17	14	27	20	21	17	15	12	16	4	33.3%	-5.9%	14.3%	-40.7%	-20.0%	-23.8%
	Certificate	0	0	0	0	1	3	2	0	4	4	n/a	n/a	n/a	n/a	n/a	300.0%
610102 Creative Writing	Total	8	12	14	23	19	11	13	10	21	11	110.0%	162.5%	75.0%	50.0%	-8.7%	10.5%
	Masters	6	10	9	12	7	4	7	2	8	6	300.0%	33.3%	-20.0%	-11.1%	-33.3%	14.3%
	Bachelor	2	2	5	11	12	7	6	8	13	5	62.5%	550.0%	550.0%	160.0%	18.2%	8.3%
610103 Applied Linguistics	Total	0	0	0	0	0	0	2	1	1	0	0.0%	n/a	n/a	n/a	n/a	n/a
	Bachelor	0	0	0	0	0	0	2	1	1	0	0.0%	n/a	n/a	n/a	n/a	n/a
610201 History	Total	16	18	28	32	13	23	18	20	12	-8	-40.0%	-25.0%	-33.3%	-57.1%	-62.5%	-7.7%
	Masters	0	7	4	5	4	2	6	3	4	1	33.3%	n/a	-42.9%	0.0%	-20.0%	0.0%
	Bachelor	16	11	24	27	9	21	12	17	8	-9	-52.9%	-50.0%	-27.3%	-66.7%	-70.4%	-11.1%
610202 Intern Studies	Total	2	6	2	4	7	2	2	8	3	-5	-62.5%	50.0%	-50.0%	50.0%	-25.0%	-57.1%
	Bachelor	2	6	2	4	7	2	2	8	3	-5	-62.5%	50.0%	-50.0%	50.0%	-25.0%	-57.1%
610203 Geography	Total	0	0	1	0	0	0	0	0	0	0	n/a	n/a	n/a	-100.0%	n/a	n/a
	Bachelor	0	0	1	0	0	0	0	0	0	0	n/a	n/a	n/a	-100.0%	n/a	n/a
610204 Religion	Total	2	0	0	1	0	0	1	0	1	1	n/a	-50.0%	n/a	n/a	0.0%	n/a
	Bachelor	2	0	0	1	0	0	1	0	1	1	n/a	-50.0%	n/a	n/a	0.0%	n/a
610301 Mod & Class Lang	Total	12	14	34	28	19	11	7	29	17	-12	-41.4%	41.7%	21.4%	-50.0%	-39.3%	-10.5%
	Masters	2	1	6	3	5	1	1	6	5	-1	-16.7%	150.0%	400.0%	-16.7%	66.7%	0.0%
	Bachelor	10	13	28	25	10	8	4	11	6	-5	-45.5%	-40.0%	-53.8%	-78.6%	-76.0%	-40.0%
	Certificate	0	0	0	0	4	2	2	12	6	-6	-50.0%	n/a	n/a	n/a	n/a	50.0%
610312 American Sign Language	Total	0	0	0	0	0	0	0	0	1	1	n/a	n/a	n/a	n/a	n/a	n/a
	Bachelor	0	0	0	0	0	0	0	0	1	1	n/a	n/a	n/a	n/a	n/a	n/a
610401 Philosophy	Total	3	2	4	5	6	3	2	3	1	-2	-66.7%	-66.7%	-50.0%	-75.0%	-80.0%	-83.3%
	Bachelor	3	2	4	5	6	3	2	3	1	-2	-66.7%	-66.7%	-50.0%	-75.0%	-80.0%	-83.3%
610601 Women Studies	Total	0	2	4	6	3	7	5	2	4	2	100.0%	n/a	100.0%	0.0%	-33.3%	33.3%
	Bachelor	0	2	4	6	3	7	5	2	4	2	100.0%	n/a	100.0%	0.0%	-33.3%	33.3%
610602 Ethnic Studies	Total	1	0	13	3	0	2	2	1	0	-1	-100.0%	-100.0%	n/a	-100.0%	-100.0%	n/a
	Bachelor	1	0	13	3	0	2	2	1	0	-1	-100.0%	-100.0%	n/a	-100.0%	-100.0%	n/a
619901 Liberal Studies	Total	0	6	7	11	6	6	8	5	5	-3	-37.5%	n/a	-16.7%	-28.6%	-54.5%	-16.7%
	Masters	0	6	7	9	1	2	3	4	0	-4	-100.0%	n/a	-100.0%	-100.0%	-100.0%	-100.0%
	Certificate	0	0	0	2	5	4	3	4	5	1	25.0%	n/a	n/a	n/a	150.0%	0.0%

Table 5: Degree Production by Departmental Unit by College Division

College Div/Dept Unit/Degree type:	Academic Year (Fall, Spring, Summer awards)										diff		percentage change				
	1980	1990	2000	2010	2020	2021	2022	2023	2024	2023 to 2024		1980 to 2024	1990 to 2024	2000 to 2024	2010 to 2024	2020 to 2024	
College of LAS Natural Science and Mathematics:																	
620101 Biology	Total	34	15	37	43	59	78	64	79	81	2	2.5%	138.2%	440.0%	118.9%	88.4%	37.3%
	Masters	3	2	6	5	4	12	11	5	7	2	40.0%	133.3%	250.0%	16.7%	40.0%	75.0%
	Bachelor	31	13	31	38	55	66	53	74	74	0	0.0%	138.7%	469.2%	138.7%	94.7%	34.5%
620102 Biochem (Biol)	Total	0	1	6	2	5	2	0	1	1	0	0.0%	n/a	0.0%	-83.3%	-50.0%	-80.0%
	Bachelor	0	1	6	2	5	2	0	1	1	0	0.0%	n/a	0.0%	-83.3%	-50.0%	-80.0%
620201 Chemistry	Total	23	5	19	33	19	13	14	22	19	-3	-13.6%	-17.4%	280.0%	0.0%	-42.4%	0.0%
	Doctoral	2	1	4	4	4	2	1	5	3	-2	-40.0%	50.0%	200.0%	-25.0%	-25.0%	-25.0%
	Masters	6	0	1	4	3	2	4	5	4	-1	-20.0%	-33.3%	n/a	300.0%	0.0%	33.3%
	Bachelor	15	4	14	25	12	9	9	12	12	0	0.0%	-20.0%	200.0%	-14.3%	-52.0%	0.0%
620202 Chemistry Sci	Total	0	0	3	8	3	4	8	2	6	4	200.0%	n/a	n/a	100.0%	-25.0%	100.0%
	Bachelor	0	0	3	8	3	4	8	2	6	4	200.0%	n/a	n/a	100.0%	-25.0%	100.0%
620203 Chemistry Bus	Total	0	4	3	2	3	3	1	0	2	2	n/a	n/a	-50.0%	-33.3%	0.0%	-33.3%
	Bachelor	0	4	3	2	3	3	1	0	2	2	n/a	n/a	-50.0%	-33.3%	0.0%	-33.3%
620204 Biochem (Chem)	Total	0	0	0	7	2	1	5	1	4	3	300.0%	n/a	n/a	n/a	-42.9%	100.0%
	Bachelor	0	0	0	7	2	1	5	1	4	3	300.0%	n/a	n/a	n/a	-42.9%	100.0%
620301 Geology	Total	15	10	5	5	8	7	12	8	7	-1	-12.5%	-53.3%	-30.0%	40.0%	40.0%	-12.5%
	Masters	2	6	1	0	0	0	0	0	0	0	n/a	-100.0%	-100.0%	-100.0%	n/a	n/a
	Bachelor	13	4	4	5	8	6	8	3	5	2	66.7%	-61.5%	25.0%	25.0%	0.0%	-37.5%
	Certificate	0	0	0	0	0	1	4	5	2	-3	-60.0%	n/a	n/a	n/a	n/a	n/a
620302 Earth Envir & Phys Sci	Total	0	0	1	2	3	11	2	2	4	2	100.0%	n/a	n/a	300.0%	100.0%	33.3%
	Masters	0	0	1	2	3	11	2	2	4	2	100.0%	n/a	n/a	300.0%	100.0%	33.3%
620401 Mathematics	Total	10	15	23	9	19	18	13	18	17	-1	-5.6%	70.0%	13.3%	-26.1%	88.9%	-10.5%
	Doctoral	0	0	1	2	4	4	0	5	3	-2	-40.0%	n/a	n/a	200.0%	50.0%	-25.0%
	Masters	3	8	8	3	6	4	4	6	5	-1	-16.7%	66.7%	-37.5%	-37.5%	66.7%	-16.7%
	Bachelor	7	7	14	4	9	10	9	7	9	2	28.6%	28.6%	28.6%	-35.7%	125.0%	0.0%
620402 Statistics	Total	1	2	0	0	3	2	3	1	1	0	0.0%	0.0%	-50.0%	n/a	n/a	-66.7%
	Bachelor	1	2	0	0	3	2	3	1	1	0	0.0%	0.0%	-50.0%	n/a	n/a	-66.7%
620403 Data Analytics	Total	0	0	0	0	0	1	3	4	5	1	25.0%	n/a	n/a	n/a	n/a	n/a
	Masters	0	0	0	0	0	0	1	0	1	1	n/a	n/a	n/a	n/a	n/a	n/a
	Bachelor	0	0	0	0	0	0	1	0	2	2	n/a	n/a	n/a	n/a	n/a	n/a
	Certificate	0	0	0	0	0	1	1	4	2	-2	-50.0%	n/a	n/a	n/a	n/a	n/a
620403 Personal Comp	Total	0	0	0	0	2	2	2	0	0	0	n/a	n/a	n/a	n/a	n/a	-100.0%
	Bachelor	0	0	0	0	2	2	2	0	0	0	n/a	n/a	n/a	n/a	n/a	-100.0%
620404 Physics	Total	7	12	4	3	10	6	11	8	9	1	12.5%	28.6%	-25.0%	125.0%	200.0%	-10.0%
	Masters	3	7	2	0	4	3	5	1	5	4	400.0%	66.7%	-28.6%	150.0%	n/a	25.0%
	Bachelor	4	5	2	3	6	3	6	6	3	-3	-50.0%	-25.0%	-40.0%	50.0%	0.0%	-50.0%
	Certificate	0	0	0	0	0	0	0	1	1	0	0.0%	n/a	n/a	n/a	n/a	n/a

Table 5: Degree Production by Departmental Unit by College Division

College Div/Dept Unit/Degree type:	Academic Year (Fall, Spring, Summer awards)										diff		percentage change				
	1980	1990	2000	2010	2020	2021	2022	2023	2024	2023 to 2024	1980 to 2024	1990 to 2024	2000 to 2024	2010 to 2024	2020 to 2024		
College of LAS Social Sciences:																	
630101 Anthropology	Total	12	10	23	34	26	22	32	28	24	-4	-14.3%	100.0%	140.0%	4.3%	-29.4%	-7.7%
	Masters	4	4	12	12	7	4	8	4	9	5	125.0%	125.0%	125.0%	-25.0%	-25.0%	28.6%
	Bachelor	8	6	11	22	17	12	20	18	14	-4	-22.2%	75.0%	133.3%	27.3%	-36.4%	-17.6%
	Certificate	0	0	0	0	2	6	4	6	1	-5	-83.3%	n/a	n/a	n/a	n/a	-50.0%
630201 Communication	Total	21	16	33	51	44	46	28	29	37	8	27.6%	76.2%	131.3%	12.1%	-27.5%	-15.9%
	Masters	15	14	11	14	9	15	5	8	12	4	50.0%	-20.0%	-14.3%	9.1%	-14.3%	33.3%
	Bachelor	6	2	22	36	35	30	23	21	25	4	19.0%	316.7%	1150.0%	13.6%	-30.6%	-28.6%
	Certificate	0	0	0	1	0	1	0	0	0	0	n/a	n/a	n/a	n/a	-100.0%	n/a
630202 Journalism	Total	21	12	5	9	9	5	5	7	6	-1	-14.3%	-71.4%	-50.0%	20.0%	-33.3%	-33.3%
	Bachelor	21	12	5	9	9	5	5	7	6	-1	-14.3%	-71.4%	-50.0%	20.0%	-33.3%	-33.3%
630203 Broadcast Jour	Total	0	1	6	7	0	0	0	0	0	0	n/a	n/a	-100.0%	-100.0%	-100.0%	n/a
	Bachelor	0	1	6	7	0	0	0	0	0	0	n/a	n/a	-100.0%	-100.0%	-100.0%	n/a
630204 Electronic Media	Total	0	0	5	10	13	9	2	6	7	1	16.7%	n/a	n/a	40.0%	-30.0%	-46.2%
	Bachelor	0	0	5	10	13	9	2	6	7	1	16.7%	n/a	n/a	40.0%	-30.0%	-46.2%
630205 Integrated Markt	Total	0	29	35	37	31	27	26	18	13	-5	-27.8%	n/a	-55.2%	-62.9%	-64.9%	-58.1%
	Bachelor	0	29	35	37	31	27	26	18	13	-5	-27.8%	n/a	-55.2%	-62.9%	-64.9%	-58.1%
630206 Comm Open Emp	Total	0	0	0	2	7	5	8	4	5	1	25.0%	n/a	n/a	n/a	150.0%	-28.6%
	Bachelor	0	0	0	2	7	5	8	4	5	1	25.0%	n/a	n/a	n/a	150.0%	-28.6%
630299 Comm Other	Total	9	15	2	0	0	0	0	0	0	0	n/a	-100.0%	-100.0%	-100.0%	n/a	n/a
	Masters	0	0	2	0	0	0	0	0	0	0	n/a	n/a	n/a	-100.0%	n/a	n/a
	Bachelor	9	15	0	0	0	0	0	0	0	0	n/a	-100.0%	-100.0%	n/a	n/a	n/a
630301 Criminal Justice	Total	132	50	100	118	110	97	88	98	87	-11	-11.2%	-34.1%	74.0%	-13.0%	-26.3%	-20.9%
	Masters	50	11	20	26	18	9	13	18	13	-5	-27.8%	-74.0%	18.2%	-35.0%	-50.0%	-27.8%
	Bachelor	64	39	80	84	92	88	75	80	74	-6	-7.5%	15.6%	89.7%	-7.5%	-11.9%	-19.6%
	Associates	18	0	0	0	0	0	0	0	0	0	n/a	-100.0%	n/a	n/a	n/a	n/a
	Certificate	0	0	0	8	0	0	0	0	0	0	n/a	n/a	n/a	n/a	-100.0%	n/a
630302 Forensic Science	Total	0	0	0	1	7	7	1	10	14	4	40.0%	n/a	n/a	n/a	1300.0%	100.0%
	Bachelor	0	0	0	1	7	7	1	10	14	4	40.0%	n/a	n/a	n/a	1300.0%	100.0%
630303 Homeland Security	Total	0	0	0	0	3	2	8	13	10	-3	-23.1%	n/a	n/a	n/a	n/a	233.3%
	Bachelor	0	0	0	0	3	2	8	13	10	-3	-23.1%	n/a	n/a	n/a	n/a	233.3%
630601 Political Science	Total	19	28	21	29	27	26	33	23	25	2	8.7%	31.6%	-10.7%	19.0%	-13.8%	-7.4%
	Masters	7	7	0	0	0	0	0	0	0	0	n/a	-100.0%	-100.0%	n/a	n/a	n/a
	Bachelor	12	21	21	29	27	26	33	23	25	2	8.7%	108.3%	19.0%	19.0%	-13.8%	-7.4%

Table 5: Degree Production by Departmental Unit by College Division

College Div/Dept Unit/Degree type:	Academic Year (Fall, Spring, Summer awards)										diff		percentage change				
	1980	1990	2000	2010	2020	2021	2022	2023	2024	2023 to 2024		1980 to 2024	1990 to 2024	2000 to 2024	2010 to 2024	2020 to 2024	
630701 Psychology	Total	30	58	86	142	159	174	140	133	153	20	15.0%	410.0%	163.8%	77.9%	7.7%	-3.8%
	Masters	5	14	15	14	12	8	5	6	6	0	0.0%	20.0%	-57.1%	-60.0%	-57.1%	-50.0%
	Bachelor	25	44	71	128	128	153	125	120	136	16	13.3%	444.0%	209.1%	91.5%	6.3%	6.3%
	Certificate	0	0	0	0	19	13	10	7	11	4	57.1%	n/a	n/a	n/a	n/a	-42.1%
630702 Clin Psychology	Total	0	0	2	2	5	2	5	2	6	4	200.0%	n/a	n/a	200.0%	200.0%	20.0%
	Doctoral	0	0	2	2	5	2	5	2	6	4	200.0%	n/a	n/a	200.0%	200.0%	20.0%
630703 Comm Psychology	Total	0	0	0	2	5	2	4	2	1	-1	-50.0%	n/a	n/a	n/a	-50.0%	-80.0%
	Doctoral	0	0	0	2	5	2	4	2	1	-1	-50.0%	n/a	n/a	n/a	-50.0%	-80.0%
630704 Human Factors	Total	0	0	2	3	2	5	1	1	4	3	300.0%	n/a	n/a	100.0%	33.3%	100.0%
	Doctoral	0	0	2	3	2	5	1	1	4	3	300.0%	n/a	n/a	100.0%	33.3%	100.0%
630801 Public Admin	Total	15	16	21	35	43	64	69	60	43	-17	-28.3%	186.7%	168.8%	104.8%	22.9%	0.0%
	Masters	15	16	21	14	17	24	26	24	16	-8	-33.3%	6.7%	0.0%	-23.8%	14.3%	-5.9%
	Certificate	0	0	0	21	26	40	43	36	27	-9	-25.0%	n/a	n/a	n/a	28.6%	3.8%
630901 Social Work	Total	109	166	45	128	140	136	152	140	124	-16	-11.4%	13.8%	-25.3%	175.6%	-3.1%	-11.4%
	Masters	0	0	0	69	52	67	69	69	61	-8	-11.6%	n/a	n/a	n/a	-11.6%	17.3%
	Bachelor	109	166	45	59	75	63	74	62	53	-9	-14.5%	-51.4%	-68.1%	17.8%	-10.2%	-29.3%
	Certificate	0	0	0	0	13	6	9	9	10	1	11.1%	n/a	n/a	n/a	n/a	-23.1%
631001 Sociology	Total	12	18	66	61	21	19	20	18	17	-1	-5.6%	41.7%	-5.6%	-74.2%	-72.1%	-19.0%
	Masters	5	4	9	6	1	2	3	0	4	4	n/a	-20.0%	0.0%	-55.6%	-33.3%	300.0%
	Bachelor	7	14	57	55	20	17	17	18	13	-5	-27.8%	85.7%	-7.1%	-77.2%	-76.4%	-35.0%
College of LAS Other:																	
640202 LAS AA deg	Total	31	100	74	41	82	98	69	53	207	154	290.6%	567.7%	107.0%	179.7%	404.9%	152.4%
	Associates	31	100	74	41	82	98	69	53	207	154	290.6%	567.7%	107.0%	179.7%	404.9%	152.4%
640203 LAS Cert	Total	0	0	0	1	7	1	6	4	9	5	125.0%	n/a	n/a	n/a	800.0%	28.6%
	Certificate	0	0	0	1	7	1	6	4	9	5	125.0%	n/a	n/a	n/a	800.0%	28.6%
Other College Units:																	
700101 Honors Baccalaureate	Total	0	0	0	0	4	3	5	2	0	-2	-100.0%	n/a	n/a	n/a	n/a	-100.0%
	Bachelor	0	0	0	0	4	3	5	2	0	-2	-100.0%	n/a	n/a	n/a	n/a	-100.0%
700201 Innovation Design	Total	0	0	0	0	11	4	13	5	5	0	0.0%	n/a	n/a	n/a	n/a	-54.5%
	Masters	0	0	0	0	10	4	9	5	5	0	0.0%	n/a	n/a	n/a	n/a	-50.0%
	Certificate	0	0	0	0	1	0	4	0	0	0	n/a	n/a	n/a	n/a	n/a	-100.0%