



WICHITA STATE UNIVERSITY
STUDENT AFFAIRS
Connecting Every Student



**STUDENT AFFAIRS
LEADERSHIP
DIRECTORY**
2023-2024



STUDENT AFFAIRS LEADERSHIP

Teri Hall, Ph.D.

Vice President, Student Affairs

Gabriel Fonseca

Interim Executive Director, Student Engagement

Kevin Konda

Associate Vice President, Student Affairs / Auxiliary Services

Alicia Newell

Assistant Vice President of Student Belonging

Jessica Provines, Ph.D.

Assistant Vice President of Wellness & Chief Psychologist

Scott Jensen

Assistant Vice President of Operations

STUDENT AFFAIRS DIRECTORS

Katie Austin

Katie Davidson

Jillian Hoefer

Jamie Kraisinger

John Lee

Christopher Leonard

Isabel Medina Keiser

Kennedy Rogers

Heather Stafford

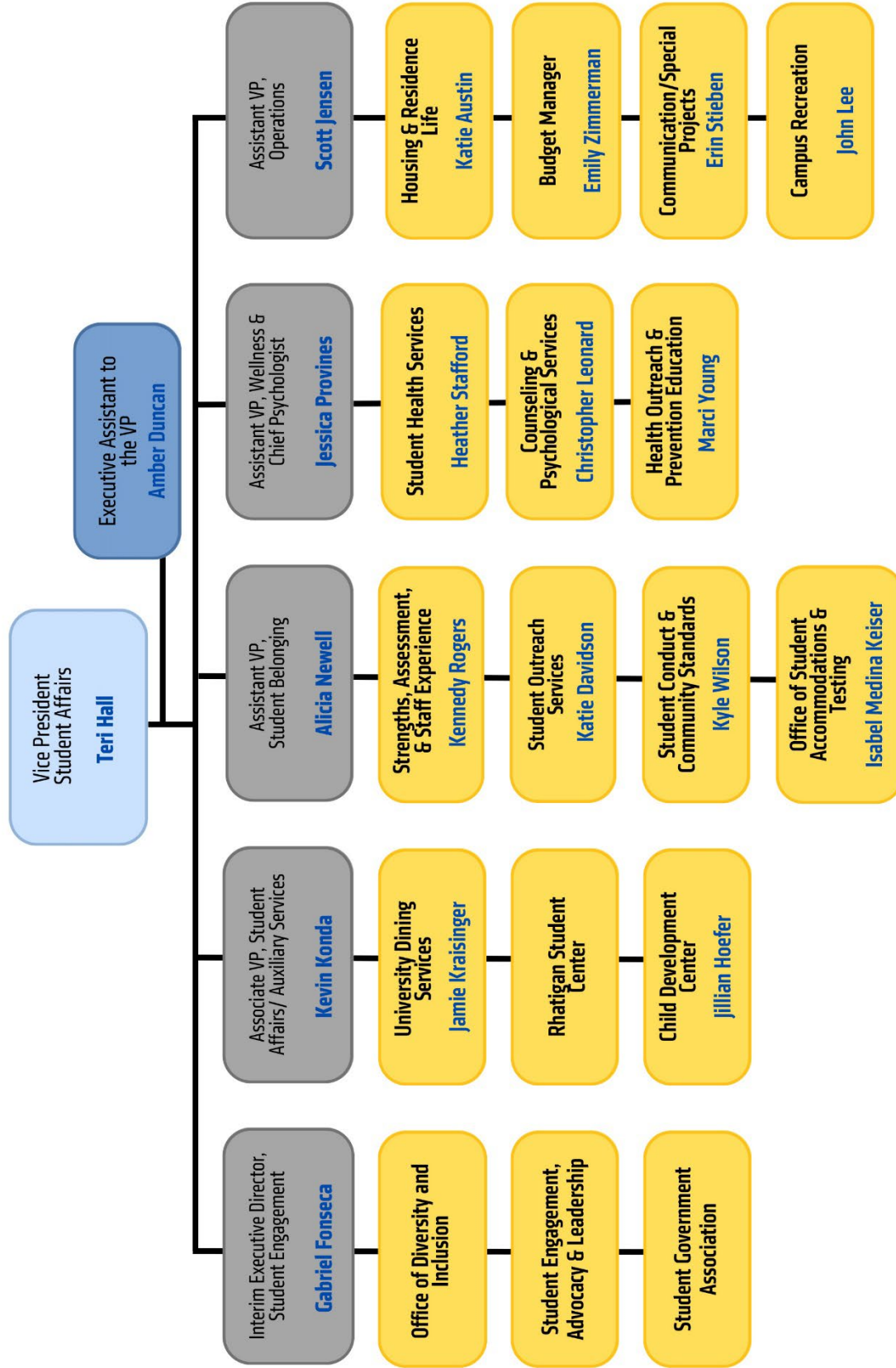
Erin Stieben

Kyle Wilson

Marci Young

Emily Zimmerman

STUDENT AFFAIRS ORGANIZATION CHART



Academic Year 2023-2024

OFFICE OF THE VICE PRESIDENT, STUDENT AFFAIRS



Teri Hall, Ph.D.

Vice President

Department: Office of the Vice President, Student Affairs

Phone: (316) 978-3021

Web: wichita.edu/studentaffairs

Direct Extension: (316) 978-3021

Email: teri.hall@wichita.edu



Amber Duncan

Executive Assistant to the Vice President

Department: Office of the Vice President, Student Affairs

Phone: (316) 978-3021

Web: wichita.edu/studentaffairs

Direct Extension: (316) 978-3021

Email: amber.duncan@wichita.edu

STUDENT ENGAGEMENT



Gabriel Fonseca, M.Ed.

Interim Executive Director, Student Engagement

Department: Office of Diversity & Inclusion

Phone: (316) 978-3034

Web: wichita.edu/odi

Department: Student Engagement, Advocacy & Leadership

Phone: (316) 978-3022

Web: wichita.edu/seal

Department: Student Government Association

Phone: (316) 978-3480

Web: wichita.edu/sga

Direct Extension: (316) 978-7015

Email: gabriel.fonseca@wichita.edu

AUXILIARY SERVICES



Kevin Konda

Associate Vice President, Student Affairs / Auxiliary Services

Department: Rhatigan Student Center

Phone: (316) 978-3487

Web: wichita.edu/rsc

Direct Extension: (316) 978-7001

Email: kevin.konda@wichita.edu



Jamie Kraisinger

Senior Director of Operations

Department: University Dining Services

Phone: (316) 978-3477

Web: wichita.edu/dining

Direct Extension: (316) 978-7569

Email: jamie.kraisinger@compass-usa.com



Jillian Hoefler

Director, Child Development Center

Department: Child Development Center

Phone: (316) 978-3109

Web: wichita.edu/childdevelopment

Direct Extension: (316) 978-5244

Email: jillian.hoefler@wichita.edu

STUDENT BELONGING



Alicia Newell

Assistant Vice President of Student Belonging

Department: Student Affairs - Student Belonging Unit

Phone: (316) 978-3149

Web: wichita.edu/studentaffairs

Direct Extension: (316) 978-6105

Email: alicia.newell@wichita.edu



Kennedy Rogers

Director, Strengths, Assessment, & Staff Experience

Department: Strengths, Assessment, & Staff Experience

Phone: (316) 978-3149

Web: wichita.edu/sase

Direct Extension: (316) 978-6616

Email: kennedy.rogers@wichita.edu



Katie Davidson

Director, Student Outreach & Support

Department: Student Outreach & Support

Phone: (316) 978-3149

Web: wichita.edu/careteam

Direct Extension: (316) 978-6122

Email: katie.davidson@wichita.edu



Kyle Wilson

Director, Student Conduct & Community Standards

Department: Student Conduct and Community Standards

Phone: (316) 978-6681

Web: wichita.edu/studentconduct

Direct Extension: (316) 978-6681

Email: kyle.wilson@wichita.edu



Isabel Medina Keiser

Director, Student Accommodations & Testing

Department: Office of Student Accommodations & Testing

Phone: (316) 978-3309

Web: wichita.edu/osat

Direct Extension: (316) 978-6970

Email: isabel.medinakeiser@wichita.edu



Jessica Provines, Ph.D.
Assistant Vice President of Wellness & Chief Psychologist

Department: Student Affairs – Wellness Unit

Phone: (316) 978-4792

Web: wichita.edu/wellness

Direct Extension: (316) 978-4792

Email: jessica.provines@wichita.edu



Heather Stafford, BSN, RN
Director, Student Health Services

Department: Student Health Services

Phone: (316) 978-4792

Web: wichita.edu/shs

Direct Extension: (316) 978-6837

Email: heather.stafford@wichita.edu



Christopher Leonard
Director, Counseling & Psychological Services

Department: Counseling & Psychological Services

Phone: (316) 978-4792

Web: wichita.edu/caps

Direct Extension: (316) 978-4792

Email: christopher.leonard@wichita.edu



Marci Young
Director, Health, Outreach, Prevention & Education Services

Department: Health, Outreach, Prevention & Education Services

Phone: (316) 978-4792

Web: wichita.edu/hope

Direct Extension: (316) 978-4792

Email: marci.young@wichita.edu

OPERATIONS



Scott Jensen

Assistant Vice President of Operations

Department: Student Affairs – Operations Unit

Phone: (316) 978-6612

Web: wichita.edu/studentaffairs

Direct Extension: (316) 978-6612

Email: scott.jensen@wichita.edu



Katie Austin

Director, Housing & Residence Life

Department: Housing & Residence Life

Phone: (316) 978-3693

Web: wichita.edu/housing

Direct Extension: (316) 978-3467

Email: katie.austin@wichita.edu



Emily Zimmerman

Budget Manager

Department: Student Affairs – Operations Unit

Phone: (316) 978-6940

Web: wichita.edu/studentaffairs

Direct Extension: (316) 978-6940

Email: emily.zimmerman@wichita.edu



Erin Stieben

Director, Marketing & Special Projects

Department: Communications & Special Projects

Phone: (316) 978-3152

Web: wichita.edu/studentaffairs

Direct Extension: (316) 978-3152

Email: erin.stieben@wichita.edu



John Lee
Director, Campus Recreation

Department: Campus Recreation

Phone: (316) 978-3082

Web: wichita.edu/campusrecreation

Direct Extension: (316) 978-5290

Email: john.lee@wichita.edu



WICHITA STATE UNIVERSITY
STUDENT AFFAIRS
Connecting Every Student