

Campus Recreation

ANNUAL REPORT FY21

Wichita State University
Student Affairs
Wellness Division



CONTENTS



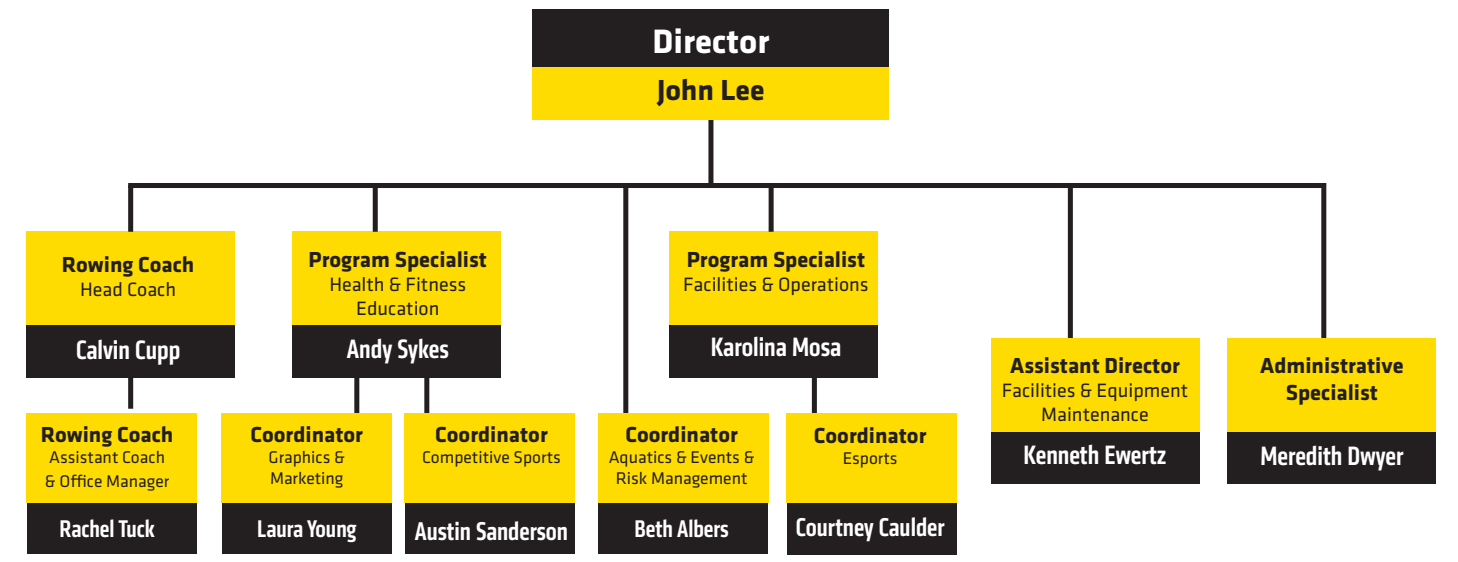
- ▶ **Vision, Mission, Values, Goals**
- ▶ **Our Team**
- ▶ **Message From The Director**
- ▶ **University Participation**
- ▶ **Program Highlights**
 - ▶ **Aquatics & Risk Management**
 - ▶ **Intramurals**
 - ▶ **Sport Clubs**
 - ▶ **Fitness & Wellness**
 - ▶ **Outdoor Adventures**
 - ▶ **Special Events**
 - ▶ **Varsity Esports**
 - ▶ **Rowing**
- ▶ **Facility Projects**
- ▶ **Marketing**
- ▶ **Financials**
- ▶ **Boats and Bikes**

VISION
To deliver quality recreation, fitness and leisure programs and services that connects every student.

MISSION
Provide the Wichita State University community with diverse recreational and wellness activities that will promote a healthy and active lifestyle.

- VALUES**
At Campus Recreation we value...
- ▶ The well-being of the campus community
 - ▶ Teamwork
 - ▶ Creating and seizing opportunities
 - ▶ Student development and applied learning
 - ▶ Fostering an inclusive environment and celebrating differences
 - ▶ Transparency in our decision making

- GOALS**
- **Goal 1:** Insure our facilities provide a safe and welcoming environment.
 - **Goal 2:** To continue to be a leader for recreation, fitness, and leisure experiences for the WSU campus community.
 - **Goal 3:** To provide innovative student development opportunities through our SHOCKS Recreation program.
 - **Goal 4:** Be a department that reflects the evolving diversity of our society.
 - **Goal 5:** Provide exciting and fun recreational and fitness opportunities.
 - **Goal 6:** To promote a lifelong exploration and development of the mind and body.





JOHN LEE

This academic year brought us many challenges due to COVID19. Campus Recreation was not able to offer many of our programs and services. Each month seemed to bring us new challenges on how to offer programming. During this time Campus Recreation did adapt and offered on-line recreational opportunities including Esports, Group Exercise classes and weekly wellness information hosted by student staff. I was very proud of our professional and student staff this year and how they handled this unprecedented crisis.

Campus Recreation also completed a new Strategic Plan that will move us forward over the next three years. Student Staff development, facilities, and programming for a diverse population was the major emphasis for this plan.

I want to note a few accomplishments from Campus Recreation:

Pulling for Youth Horizons (rowing program for “at risk” teens at the River Vista Boathouse)

- ▶ This is a new program where “at risk” teenagers are given an opportunity to be a part of a team and learn how to row. 18 young men are participating in our pilot program.
- ▶ Campus Recreation teamed with City of Wichita Parks and Recreation and Youth Horizons.

Michael Phelps Foundation Grant (Swimming Lessons)

- ▶ The Michael Phelps Foundation Grant provided learn-to-swim, healthy living and goal-setting curriculum through the Boys and Girls Club of America.
- ▶ Campus Recreation teamed with the Wichita Boys and Girls club to offer this program to “at risk” kids.
- ▶ The aquatics staff taught Safety Around Water to 230 kids, kindergarten to 12th grade!

WSU Rowing

- ▶ Over 40 Student Athletes represented WSU on the rowing team. The team did not have a regatta for almost two years which is a testament to the student athlete’s dedication.
- ▶ The Rowing team hosted their first home regatta out of the River Vista Boathouse. The event was live streamed also for the first time!

Intramural Sports

- ▶ While participation numbers were down due to COVID the staff worked with the Health & Safety Committee to offer numerous sporting opportunities in a safe environment.
- ▶ The need for in-person events seemed more important than ever during this time and I am proud of the intramural staff for working hard to offer WSU students programming.

New Tennis and Pickleball Courts

- ▶ A plan was made to resurface four old tennis courts.
- ▶ When the project is finished there will be two tennis courts and four pickleball courts. The futsal court and basketball courts will remain.

While it was a challenging year it was also a rewarding year because our staff was creative on how they handled the pandemic and still offered valuable programs and services to the campus community.

SWIPES IN

GENDER

- Male - 37700
- Female - 24128
- N/A - 1499

CLASSES

- Freshman - 7857
- Sophomore - 8269
- Junior - 6591
- Senior - 10869
- Grad - 4977
- N/A - 29865

RACIAL BACKGROUND

- Caucasian - 11294
- Asian - 6100
- Black - 1350
- Hispanic - 1332
- American Indian - 71
- N/A - 48281

COLLEGES

- Business - 4155
- Engineering - 8224
- Fine Arts - 6125
- Grad - 4977
- Health - 1908
- Liberal - 5556
- N/A - 37483

AQUATICS & RISK MANAGEMENT



48
HOURS OF
OPEN SWIM
PER WEEK

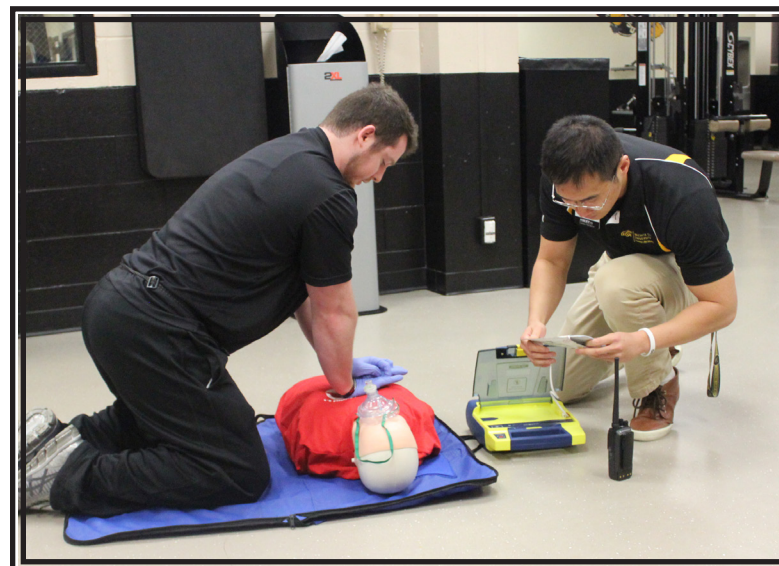
Taught *Safety Around Water* to 230 kids

Wichita Area Aqua Shocks
180 Swim Team Members

Wichita Area Masters Swim
20 Participants

RISK MANAGEMENT

- emergency drills - aquatics, facilities, fitness, intramurals
- first aid/CPR classes taught
- instructor development courses (IDC)
- in-services for student staff



INTRAMURALS & SPORT CLUBS

INTRAMURALS

38 Students Hired

250 Games

271 Teams

654 Unique Participants

1665 Participants



⬇️ Cut short due to COVID-19

SPORT CLUBS



15 Club Teams



4732 Shocker Fit Participation

- 1459 Females
- 1304 Males
- 1969 Unknown

37
F45 PLAYOFF
PARTICIPANTS
SPRING ONLY



83 Massages Sold

- 30 Minutes - 10
- 60 Minutes - 41
- 90 Minutes - 32

5640 minutes of Massage Given



Livestream Education Reach : 15991



399
RESERVATIONS



142 Academic Classes held in the Heskett Center

13455.67h reserved for Special Events & Academics

SPECIAL EVENTS



CLASH OF THE COLLEGES
AROUND 700 PARTICIPANTS



SMORES AND OARS
AROUND 100 PARTICIPANTS



PUMPKIN RUN
185 VIRTUAL 5K/1K PARTICIPANTS



F45 PLAYOFFS
37 SPRING PARTICIPANTS

EVENTS NOT HELD
DUE TO COVID-19 GUIDELINES

RECFEST
BEACH PARTY
HYDRATION STATIONS
FRIGHT NIGHT

WELLNESS FAIR
DODGEBALL TOURNAMENT
BIG PINK VOLLEYBALL

OUTDOOR ADVENTURES



Trips postponed due to COVID-19 restrictions





➔ **26**
STUDENT
ATHLETES

➔ **4**
VARSITY TEAMS

OVERWATCH

**SUPER
SMASH BROS.™**

**ROCKET
LEAGUE**

VALORANT

Overwatch

Top 4 team in EGF; Made semi-finals in league play

Rocket League

Made playoffs for EGF; Playoffs for Meta; invited to the ECAC National Championship

Super Smash

Inaugural season with 5 student athletes. Competed in Meta League and made playoffs

Valorant

First place in USF Tournament; First place in ECAC tournament; CSL Finalist

➔ **97**
STUDENTS
PARTICIPATED
33
COMPETITIVE
ATHLETES

350 Practices

9 Races/Regattas

4,819 Total Miles Traveled

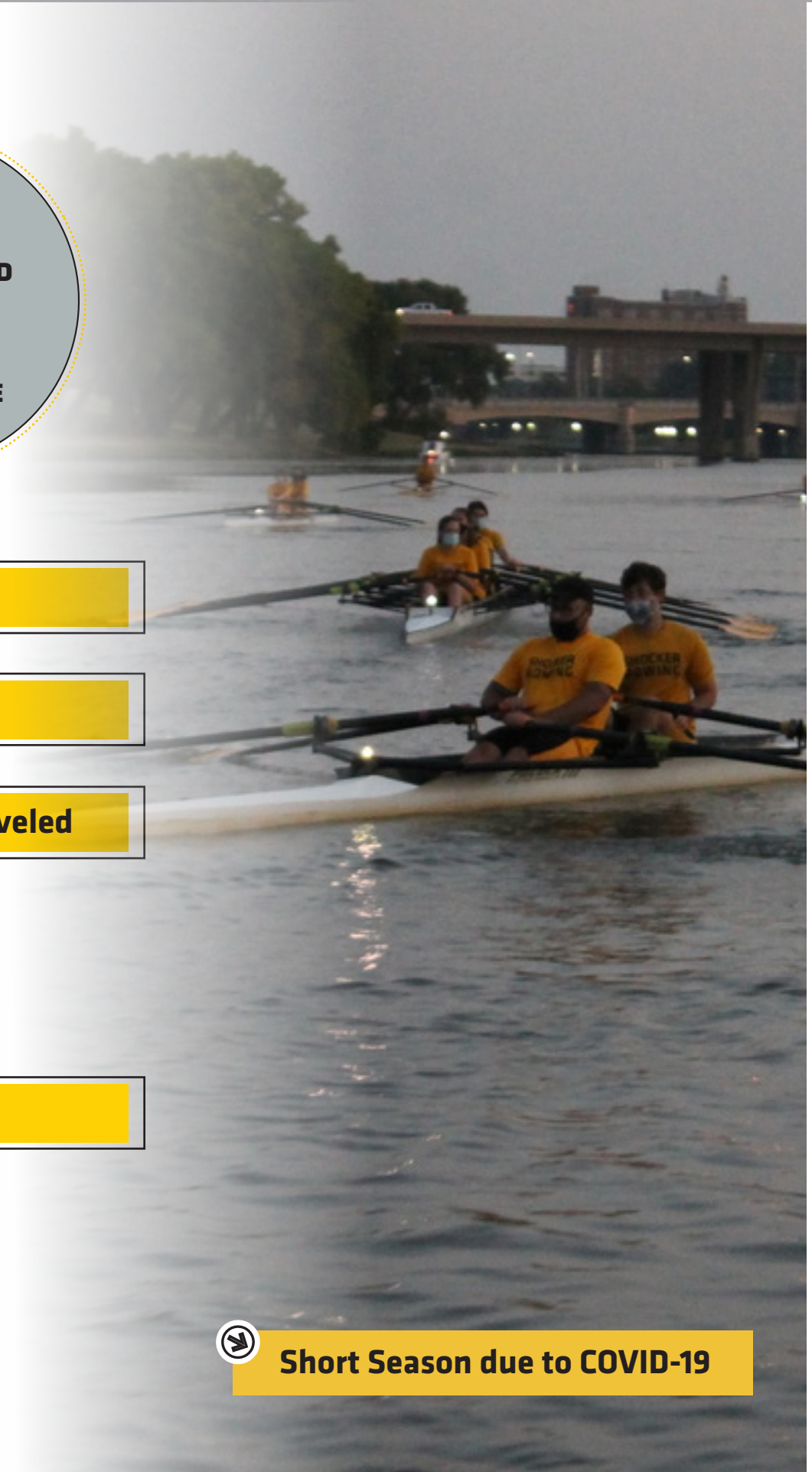
- Wichita, KS
- Oak Ridge, TN
- Oklahoma City, OK
- Philadelphia, PA
- Natchitoches, LA

Awards

- 7 All Academic Awards
- 3 All-Americans



Short Season due to COVID-19





► Shocker Fitness 145

New flooring

Painted walls

Added acoustic panneling



FACEBOOK

WICHITASTATECAMPUSRECAETION

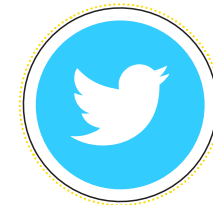
2.6K Followers



INSTAGRAM

WICHITASTATE_CAMPUSREC

1.1K Followers



TWITTER

@WICHITASTATE_CAMPUSREC

1.3K Followers



Business Operations

Total Expenditures \$626,412
Total Revenue \$699,777

Aquatics

Total Expenditures \$65,504
Total Revenue \$71,648

Facilities

Total Expenditures \$211,327
Total Revenue \$217,731

Fitness & Wellness

Total Expenditures \$36,313
Total Revenue \$40,312

Graphics:

Total Expenditures: \$25,942
Total Revenue: \$28,177

Intramural Sports

Total Expenditures: \$35,138
Total Revenue: \$35,272

Rentals/Events:

Total Expenditures: \$68,486
Total Revenue: \$93,860

University Partners

- Admissions
- Applied Studies
- Athletics
- Bowling program
- Budget Office
- Central Services
- Chartwells
- Counseling and Prevention Services
- Dance Department
- Disability Services
- Facility Planning
- Facility Services
- Financial Operations
- First Year Programs
- Foundation
- General Counsel Office
- Human Performance Studies
- Human Resources
- ITS
- Media Resources
- ODI
- Preventions Services Ambassador Board (PSAB)
- Rhatigan Student Center
- Sport Management
- Student Health
- Student Involvement
- Trio Programs
- WSU Police Department

Community Partners

- Agent Ink
- American Council on Exercise (ACE)
- Arkansas River Coalition
- Best Buy
- Boys and Girls Club of South Central Kansas
- Brian Hickey and Katy Penner for Paddle Palooza
- City of Wichita Public Works & Utilities
- Club Parkinson's Inc.
- CLX
- F45
- Festivals Inc
- Fuzzy's
- Health & Wellness Coalition of Wichita
- IMLeagues
- Maize Complete High School
- NIRSA
- River Vista – Maxus Properties
- Sedgwick County Zoo
- Special Olympics
- USD 259
- Visit Wichita
- Wichita Aqua Shocks Swim Team
- Wichita Area Masters Swim Team
- Wichita Boys and Girls Club
- Wichita City Parks and Rec
- Wichita Clean Streams
- Wichita Rowing Association
- WSU Tech
- Youth Horizons



Boats & Bikes

1,428 Individual Participants

1,167 Adults + 261 Minors

51 Season Pass Holders

5 All Equipment Pass

46 Kayak/SUP Pass



Rental Inventory

Number of Rentals = 1436*

- 8 Kayaks
- 2 Tandam Kayaks
- 10 SUPs
- 2 Recreational Rowing Shell Singles
- 3 Trikkes
- 3 Scooters
- 4 Adult/Youth Bikes
- 8 Pedal Boats

- Kayaks = 595
- Tandam Kayaks = 144
- SUPs = 74
- Trikkes = 9
- Pedal boats = 190
- Lockers = 69
- Additional 30 minute add ons = 79
- Rentals from season pass holders = 273

*Rentals of rowing shell singles were not tracked.



BOATS AND BIKES

Income through Sales

\$818

Concessions

\$435

B&B Merchandise

\$616

Shocker Rowing Merchandise

\$23,254

Rentals

\$4,952

Passes



Number days open = 126
 Number of total hours open = 1197
 Number of student employees = 9
 Number of unclassified employees = 3
 Total number of hours worked = 2508.25

Total Special Events : 4
 (Cheer Team, CAPS, WSU Women's Basketball Team, S'mores & Oars)

Additional Income : \$12,000.00
 Total Expenses : \$30,004.03
 Total Profit: (Amount in Bank 12/13/2020) = \$12,070.58

